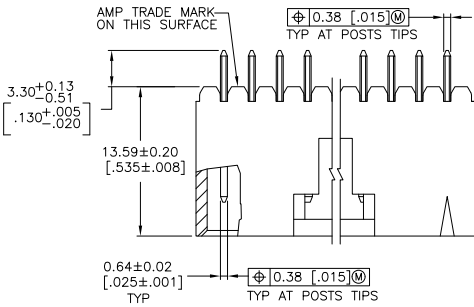
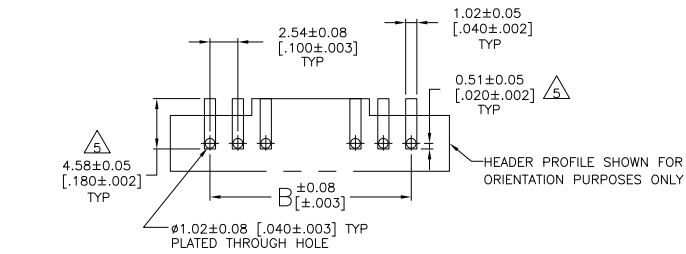
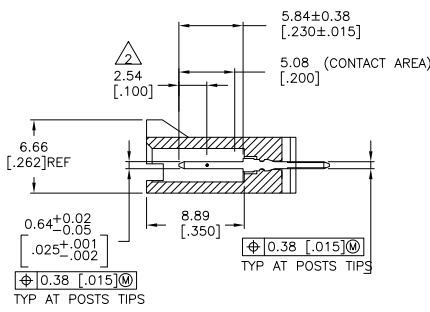
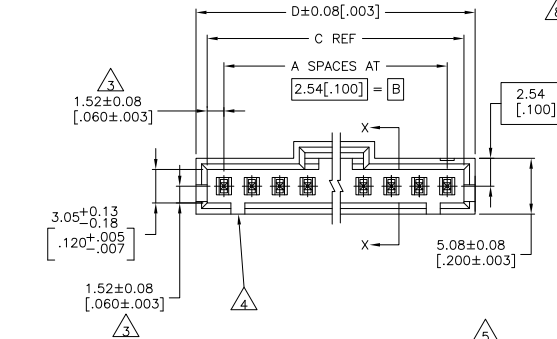


THIS DRAWING IS UNPUBLISHED. RELEASED FOR PUBLICATION. ALL RIGHTS RESERVED.

LOC	DIST	REVISIONS				
AD	00	F	REV	DATE	BY	APPD
		G2	REVISED PER ECO-11-004917	11MAR11	RK	HMR



- 1 0.00038[.000015] GOLD IN THE CONTACT AREA, 0.00254-0.00508[.000100-.000200] MATTE TIN-LEAD ON THE SOLDER TAIL, ALL OVER 0.00127[.000050] NICKEL
- 2 POINT OF MEASUREMENT FOR PLATING THICKNESS
- 3 THE NOTED DIMENSIONS APPLY FROM THE BASIC DIMENSION LINE (NOT THE POST CENTERLINE) TO THE SURFACE INDICATED
- 4 ONE POLARIZATION SLOT FOR 2 POSITION ASSEMBLY ONLY.
- 5 DIMENSIONS NOTED ARE FOR SOLDER STENCIL LAYOUT FOR USE WITH 1.57±0.02[.062±.008] THICK PRINTED CIRCUIT BOARDS.
- 6 PARTS ARE PACKAGED IN GANG OF TUBES
- 7 0.00038[.000015] GOLD IN THE CONTACT AREA, 0.00254-0.00508[.000100-.000200] MATTE TIN ON THE SOLDER TAIL, ALL OVER 0.00127[.000050] NICKEL.
- 8 OBSOLETE PARTS: OBSOLETE CIS STREAMLINING PER D.RENAUD/D.SINISI



SECTION X-X

8 SUPERSEDED BY 6-104910-2

REV	DATE	DESCRIPTION	BY	APPD
24	25	7-104910-4		
23	24	7-104910-3		
22	23	7-104910-2		
21	22	7-104910-1		
20	21	7-104910-0		
19	20	6-104910-9		
18	19	6-104910-8		
17	18	6-104910-7		
16	17	6-104910-6		
15	16	6-104910-5		
14	15	6-104910-4		
13	14	6-104910-3		
12	13	6-104910-2		
24	25	2-104910-4		
23	24	2-104910-3		
22	23	2-104910-2		
21	22	2-104910-1		
20	21	2-104910-0		
19	20	1-104910-9		
18	19	1-104910-8		
17	18	1-104910-7		
16	17	1-104910-6		
15	16	1-104910-5		
14	15	1-104910-4		
13	14	1-104910-3		
12	13	1-104910-2		

SUPERSEDED

PLATING	D	C	B	A	NO OF POSN	PART NUMBER

THIS DRAWING IS A CONTROLLED DOCUMENT.

DATE: 10-13-94
 BY: E. BRANDBERG
 CHK: G. GESEFORD
 DATE: 10-13-94
 BY: D. DUPLER
 PRODUCT SPEC: 10-13-94

MATERIAL: HIGH TEMPERATURE THERMOPLASTIC COLOR-BLACK POSTS: BRSS

FINISH: SEE TABLE

APPLICATION SPEC: POLARIZED WITH LATCHING, HIGH TEMP

SIZE: ONE CASE (DRAWING NO) A200779C=104910

RESTRICTED TO: -

CUSTOMER DRAWING

SCALE: 4:1 SHEET: 1 of 1 REV: G2

RECOMMENDED PC BOARD MOUNTING DIMENSIONS
 RECOMMENDED STENCIL THICKNESS = 0.25[.010]