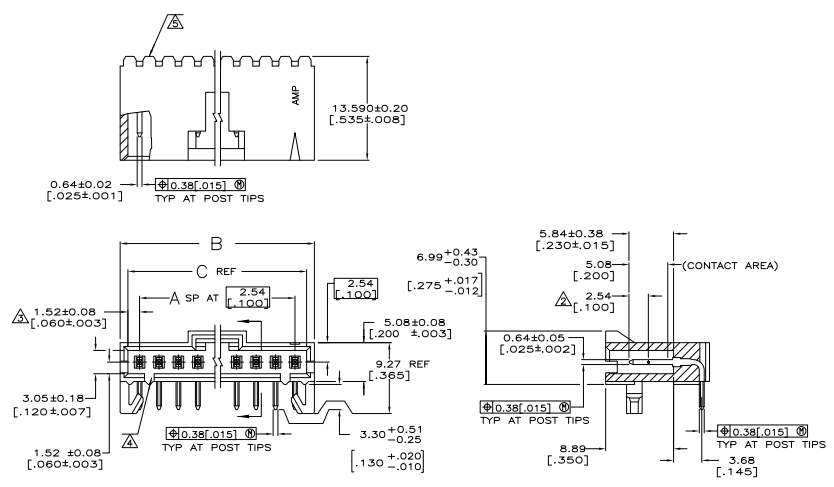
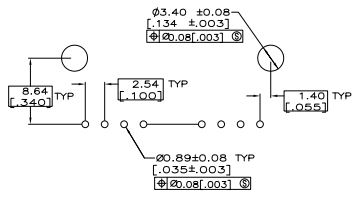


THIS DRAWING IS UNAPPROVED FOR PRODUCTION  
 ALL WORK HEREON

REVISIONS			
REV	DATE	DESCRIPTION	BY
AD	00	REVISED PER ECO-11-00487	11MMR11 RK HMR



- △ .00038[.000015] GOLD IN THE CONTACT AREA, .00254[.000100] MATTE TIN-LEAD ON REMAINDER OF CONTACT, ALL OVER .00127[.000050] NICKEL.
- △ POINT OF MEASUREMENT FOR PLATING THICKNESS.
- △ THE NOTED DIMENSIONS APPLY AT THE INTERSECTION OF THE POST AND THE HOUSING.
- △ ON ASSEMBLIES WITH FOUR OR MORE POSITIONS, TWO POLARIZATION SLOTS.  
ON ASSEMBLIES WITH TWO OR THREE POSITIONS, ONE POLARIZATION SLOT.
- △ AMP TRADEMARK MOLDED ON THIS SURFACE.
- 6. FOR USE WITH 1.57±0.20[.062±0.008] PRINTED CIRCUIT BOARD.
- △ .00038[.000015] GOLD IN THE CONTACT AREA, .00254[.000100] MATTE TIN ON REMAINDER OF CONTACT, ALL OVER .00127[.000050] NICKEL.
- △ PRELIMINARY PART - NOT RELEASED FOR PRODUCTION.
- △ HIGH TEMPERATURE CONFIGURATION.
- △ OBSOLETE PARTS: OBSOLETE CIS STREAMLINING PER D.RENAUD/D.SINISI



SEE SHEET 2 FOR PART NUMBER TABLES

THIS DRAWING IS A CONTROLLED DOCUMENT.		BY: SHAIKY	CHKD: [Signature]	TE Connectivity	
DATE: 08/07/00		BY: GEFORD	CHKD: [Signature]	TE Connectivity	
DIMENSIONS: mm (INCHES)		REV: 00	REV: 00	HR ASSY, RTANG, SINGLE ROW	
MATERIAL: 108-25034		REV: 00	REV: 00	2.54[100] C/A 0.64[025] SQ. POST,	
MATERIAL: 114-25026		REV: 00	REV: 00	WITH PLZN & HOLD DOWNS, AMPMODU MTE	
MATERIAL: [Signature]		REV: 00	REV: 00	REWORKED TO:	
MATERIAL: [Signature]		REV: 00	REV: 00	PART: A1 00779 [Signature] 103673	
MATERIAL: [Signature]		REV: 00	REV: 00	FORM: 4-1 [Signature] 1 # 2 [Signature]	
MATERIAL: [Signature]		REV: 00	REV: 00	REV: T3	

REMARKS	PLATING	C	B	A	NO. OF POSN	PART NO.
		64.01	66.04	24	25	7-103673-4
		[2.520]	[2.600]			OBSOLETE
		61.47	63.50	23	24	7-103673-3
		[2.420]	[2.500]			
		58.93	60.96	22	23	7-103673-2
		[2.320]	[2.400]			OBSOLETE
		56.39	58.42	21	22	7-103673-1
		[2.220]	[2.300]			OBSOLETE
		53.85	55.88	20	21	7-103673-0
		[2.120]	[2.200]			OBSOLETE
		51.31	53.34	19	20	6-103673-9
		[2.020]	[2.100]			
		48.77	50.80	18	19	6-103673-8
		[1.920]	[2.000]			OBSOLETE
		46.23	48.26	17	18	6-103673-7
		[1.820]	[1.900]			OBSOLETE
		43.69	45.72	16	17	6-103673-6
		[1.720]	[1.800]			
		41.15	43.18	15	16	6-103673-5
		[1.620]	[1.700]			
		38.61	40.64	14	15	6-103673-4
		[1.520]	[1.600]			
		36.07	38.10	13	14	6-103673-3
		[1.420]	[1.500]			
		33.53	35.56	12	13	6-103673-2
		[1.320]	[1.400]			OBSOLETE
		30.99	33.02	11	12	6-103673-1
		[1.220]	[1.300]			
		28.45	30.48	10	11	6-103673-0
		[1.120]	[1.200]			
		25.91	27.94	9	10	5-103673-9
		[1.020]	[1.100]			
		23.37	25.40	8	9	5-103673-8
		[.920]	[1.000]			
		20.83	22.86	7	8	5-103673-7
		[.820]	[.900]			
		18.29	20.32	6	7	5-103673-6
		[.720]	[.800]			
		15.75	17.78	5	6	5-103673-5
		[.620]	[.700]			
		13.21	15.24	4	5	5-103673-4
		[.520]	[.600]			
		10.67	12.70	3	4	5-103673-3
		[.420]	[.500]			
		8.13	10.16	2	3	5-103673-2
		[.320]	[.400]			
		5.59	7.62	1	2	5-103673-1
		[.220]	[.300]			

PLATING	C	B	A	NO. OF POSN	PART NO.
	41.15	43.18	15	16	2-103673-6
	[1.620]	[1.700]			
	18.29	20.32	6	7	2-103673-5
	[.720]	[.800]			
	64.01	66.04	24	25	2-103673-4
	[2.520]	[2.600]			
	61.47	63.50	23	24	2-103673-3
	[2.420]	[2.500]			
	58.93	60.96	22	23	2-103673-2
	[2.320]	[2.400]			OBSOLETE
	56.39	58.42	21	22	2-103673-1
	[2.220]	[2.300]			
	53.85	55.88	20	21	2-103673-0
	[2.120]	[2.200]			OBSOLETE
	51.31	53.34	19	20	1-103673-9
	[2.020]	[2.100]			
	48.77	50.80	18	19	1-103673-8
	[1.920]	[2.000]			OBSOLETE
	46.23	48.26	17	18	1-103673-7
	[1.820]	[1.900]			
	43.69	45.72	16	17	1-103673-6
	[1.720]	[1.800]			
	41.15	43.18	15	16	1-103673-5
	[1.620]	[1.700]			
	38.61	40.64	14	15	1-103673-4
	[1.520]	[1.600]			
	36.07	38.10	13	14	1-103673-3
	[1.420]	[1.500]			
	33.53	35.56	12	13	1-103673-2
	[1.320]	[1.400]			OBSOLETE
	30.99	33.02	11	12	1-103673-1
	[1.220]	[1.300]			
	28.45	30.48	10	11	1-103673-0
	[1.120]	[1.200]			
	25.91	27.94	9	10	103673-9
	[1.020]	[1.100]			
	23.37	25.40	8	9	103673-8
	[.920]	[1.000]			
	20.83	22.86	7	8	103673-7
	[.820]	[.900]			
	18.29	20.32	6	7	103673-6
	[.720]	[.800]			
	15.75	17.78	5	6	103673-5
	[.620]	[.700]			
	13.21	15.24	4	5	103673-4
	[.520]	[.600]			
	10.67	12.70	3	4	103673-3
	[.420]	[.500]			
	8.13	10.16	2	3	103673-2
	[.320]	[.400]			
	5.59	7.62	1	2	103673-1
	[.220]	[.300]			

THIS DRAWING IS A CONTROLLED DOCUMENT.

DESIGNED BY: J. GEFFORD

DATE: 108-25034

REVISED BY: 114-25026

DATE: 00779

DESCRIPTION: HR ASSY, RTANG, SINGLE ROW

2.54[100] C/A 0.64[205] SQ. POST.

WITH PLZN & HOLD DOWNS, AMPMODU MTE

REVISIONS: A | 00779 | 103673

CUSTOMER DRAWING

SCALE: 4:1

SHEET: 2 OF 2

REV: 13