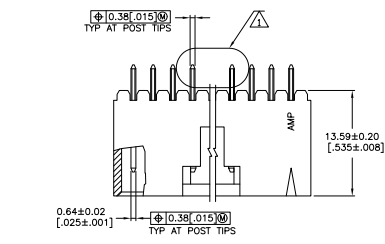
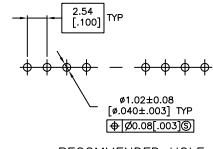
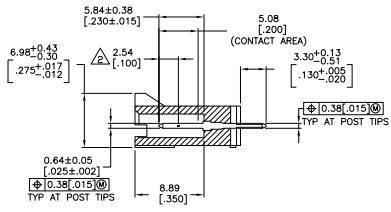
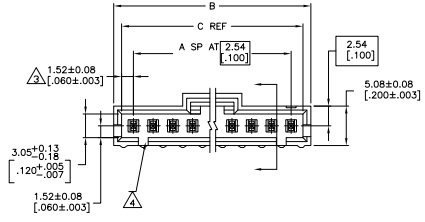


THIS DRAWING IS UNPUBLISHED  
 ALL RIGHTS RESERVED

REV	DATE	DESCRIPTION	BY	CHK
AD	00			
S2		REVISED PER EDD-11-004587	11MM11	RK HMR



DETAIL Z  
 POST DETAIL TYP  
 2 POST MINIMUM



RECOMMENDED HOLE LAYOUT

- △ .00038[.00015] GOLD IN THE CONTACT AREA, .00254[.00100] MATTE TIN-LEAD ON REMAINDER OF CONTACT, ALL OVER .00127[.000050] NICKEL.
- △ POINT OF MEASUREMENT FOR PLATING THICKNESS.
- △ THE NOTED DIMENSIONS APPLY AT THE INTERSECTION OF THE POST AND THE HOUSING.
- △ ON ASSEMBLIES WITH FOUR OR MORE POSITIONS, TWO POLARIZATION SLOTS; ON ASSEMBLIES WITH TWO OR THREE POSITIONS, ONE POLARIZATION SLOT.
- △ SELECT POST TAILS FORMED TO PROVIDE CONNECTOR HOLD DOWN UNTIL SOLDERED. CONFIGURATION ACCEPTS 0.69[0.27]-2.03[.080] THICK PRINTED CIRCUIT BOARD. ( SEE DETAIL Z ).
- △ OBSOLETE PARTS: OBSOLETE CIS STREAMLINING PER D.RENAUD/D.SINIS

	64.01 [2.520]	66.04 [2.600]	24	25	2-103670-4
	61.47 [2.420]	63.50 [2.500]	23	24	2-103670-3
6	58.93 [2.320]	60.96 [2.400]	22	23	2-103670-2
	56.39 [2.220]	58.42 [2.300]	21	22	2-103670-1
	53.85 [2.120]	55.88 [2.200]	20	21	2-103670-0
6	51.31 [2.020]	53.34 [2.100]	19	20	1-103670-9
6	48.77 [1.920]	50.80 [2.000]	18	19	1-103670-8
	46.23 [1.820]	48.26 [1.900]	17	18	1-103670-7
	43.69 [1.720]	45.72 [1.800]	16	17	1-103670-6
	41.15 [1.620]	43.18 [1.700]	15	16	1-103670-5
	38.61 [1.520]	40.64 [1.600]	14	15	1-103670-4
	36.07 [1.420]	38.10 [1.500]	13	14	1-103670-3
	33.53 [1.320]	35.56 [1.400]	12	13	1-103670-2
	30.99 [1.220]	33.02 [1.300]	11	12	1-103670-1
	28.45 [1.120]	30.48 [1.200]	10	11	1-103670-0
	25.91 [1.020]	27.94 [1.100]	9	10	103670-9
	23.37 [0.920]	25.40 [1.000]	8	9	103670-8
	20.83 [0.820]	22.86 [0.900]	7	8	103670-7
	18.29 [0.720]	20.32 [0.800]	6	7	103670-6
	15.75 [0.620]	17.78 [0.700]	5	6	103670-5
	13.21 [0.520]	15.24 [0.600]	4	5	103670-4
	10.67 [0.420]	12.70 [0.500]	3	4	103670-3
	8.13 [0.320]	10.16 [0.400]	2	3	103670-2
	5.59 [0.220]	7.62 [0.300]	1	2	103670-1
	C	B	A	NO OF POSN	PART NO.

THIS DRAWING IS A CONTROLLED DOCUMENT. SEE SHEET 1 OF 1

TE Connectivity

108-25034

114-25026

100779

103670

DATE 11/11/00

REVISED PER EDD-11-004587

11MM11

RK HMR

SIZE 4.1

1 1

S2