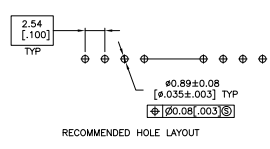
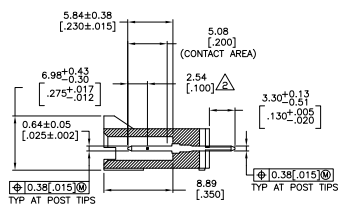
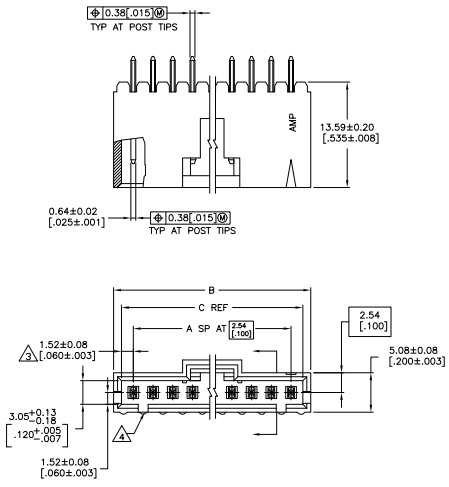


THIS DRAWING IS UNPUBLISHED  
 ALL RIGHTS RESERVED

| REV | DATE | DESCRIPTION               | BY | CHK | APP |
|-----|------|---------------------------|----|-----|-----|
| 00  |      |                           |    |     |     |
| R2  |      | REVISED PER EDD-11-004587 |    |     |     |



- △ .00038[.000015] GOLD IN THE CONTACT AREA, 00254[.000100] MATTE TIN-LEAD ON REMAINDER OF CONTACT, ALL OVER .00127[0.00050] NICKEL.
- △ POINT OF MEASUREMENT FOR PLATING THICKNESS.
- △ THE NOTED DIMENSIONS APPLY AT THE INTERSECTION OF THE POST AND THE HOUSING.
- △ ON ASSEMBLIES WITH FOUR OR MORE POSITIONS, TWO POLARIZATION SLOTS.
- △ ON ASSEMBLIES WITH TWO OR THREE POSITIONS, ONE POLARIZATION SLOT.
- △ OBSOLETE PARTS: OBSOLETE CIS STREAMLINING PER D.RENAUD/D.SINISI

| REV | DATE | DESCRIPTION              | BY            | CHK           | APP |    |            |
|-----|------|--------------------------|---------------|---------------|-----|----|------------|
| 5   |      | SUPERCEDED BY 7-104910-4 | 64.01 [2.520] | 66.04 [2.600] | 24  | 25 | 2-103638-4 |
| 5   |      | SUPERCEDED BY 7-104910-3 | 61.47 [2.420] | 63.50 [2.500] | 23  | 24 | 2-103638-3 |
| 5   |      | SUPERCEDED BY 7-104910-2 | 58.93 [2.320] | 60.96 [2.400] | 22  | 23 | 2-103638-2 |
| 5   |      | SUPERCEDED BY 7-104910-1 | 56.39 [2.220] | 58.42 [2.300] | 21  | 22 | 2-103638-1 |
| 5   |      | SUPERCEDED BY 7-104910-0 | 53.85 [2.120] | 55.88 [2.200] | 20  | 21 | 2-103638-0 |
| 5   |      | SUPERCEDED BY 6-104910-8 | 51.31 [2.020] | 53.34 [2.100] | 19  | 20 | 1-103638-9 |
| 5   |      | SUPERCEDED BY 6-104910-7 | 48.77 [1.920] | 50.80 [2.000] | 18  | 19 | 1-103638-8 |
| 5   |      | SUPERCEDED BY 6-104910-6 | 46.23 [1.820] | 48.26 [1.900] | 17  | 18 | 1-103638-7 |
| 5   |      | SUPERCEDED BY 6-104910-5 | 43.69 [1.720] | 45.72 [1.800] | 16  | 17 | 1-103638-6 |
| 5   |      | SUPERCEDED BY 6-104910-4 | 41.15 [1.620] | 43.18 [1.700] | 15  | 16 | 1-103638-5 |
| 5   |      | SUPERCEDED BY 6-104910-3 | 38.61 [1.520] | 40.64 [1.600] | 14  | 15 | 1-103638-4 |
| 5   |      | SUPERCEDED BY 6-104910-2 | 36.07 [1.420] | 38.10 [1.500] | 13  | 14 | 1-103638-3 |
| 5   |      | SUPERCEDED BY 6-104910-1 | 33.53 [1.320] | 35.56 [1.400] | 12  | 13 | 1-103638-2 |
| 5   |      | SUPERCEDED BY 6-104910-0 | 30.99 [1.220] | 33.02 [1.300] | 11  | 12 | 1-103638-1 |
| 5   |      | SUPERCEDED BY 6-104910-0 | 28.45 [1.120] | 30.48 [1.200] | 10  | 11 | 1-103638-0 |
| 5   |      | SUPERCEDED BY 6-104910-0 | 25.91 [1.020] | 27.94 [1.100] | 9   | 10 | 103638-9   |
| 5   |      | SUPERCEDED BY 6-104910-0 | 23.37 [0.920] | 25.40 [1.000] | 8   | 9  | 103638-8   |
| 5   |      | SUPERCEDED BY 6-104910-0 | 20.83 [0.820] | 22.86 [0.900] | 7   | 8  | 103638-7   |
| 5   |      | SUPERCEDED BY 6-104910-0 | 18.29 [0.720] | 20.32 [0.800] | 6   | 7  | 103638-6   |
| 5   |      | SUPERCEDED BY 6-104910-0 | 15.75 [0.620] | 17.78 [0.700] | 5   | 6  | 103638-5   |
| 5   |      | SUPERCEDED BY 6-104910-0 | 13.21 [0.520] | 15.24 [0.600] | 4   | 5  | 103638-4   |
| 5   |      | SUPERCEDED BY 6-104910-0 | 10.67 [0.420] | 12.70 [0.500] | 3   | 4  | 103638-3   |
| 5   |      | SUPERCEDED BY 6-104910-0 | 8.13 [0.320]  | 10.16 [0.400] | 2   | 3  | 103638-2   |
| 5   |      | SUPERCEDED BY 6-104910-0 | 5.59 [0.220]  | 7.62 [0.300]  | 1   | 2  | 103638-1   |
| C   | B    | A                        |               |               |     |    |            |

THIS DRAWING IS A CONTROLLED DOCUMENT. SEE SHEET 1 OF 1.

TE Connectivity

DATE: 108-25034

SIZE: 114-25026

DATE: 11-00779

NO. OF POSN: 4

PART NO.: 103638