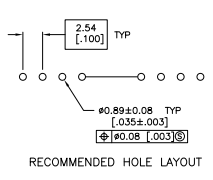
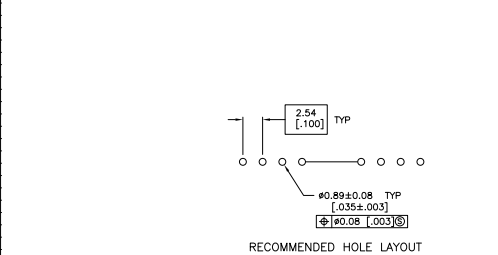
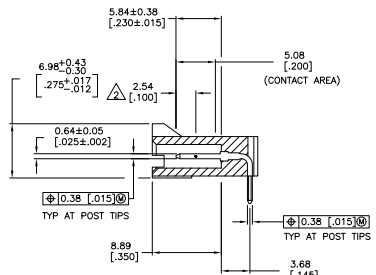
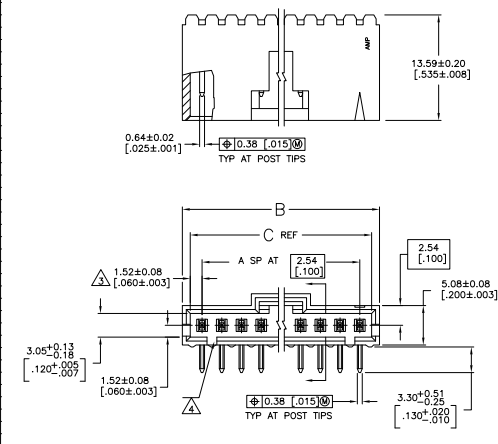


THIS DRAWING IS UNPUBLISHED
 ALL RIGHTS RESERVED

REV	DATE	DESCRIPTION	BY	CHK
AD	00			
U2		REVISED PER ECO-11-04587	11MR11	RK HMR

- △ .000100 BRIGHT TIN-LEAD OVER .000050 NICKEL.
- △ POINT OF MEASUREMENT FOR PLATING THICKNESS.
- △ THE NOTED DIMENSIONS APPLY AT THE INTERSECTION OF THE POST AND THE HOUSING.
- △ ON ASSEMBLIES WITH FOUR OR MORE POSITIONS, TWO POLARIZATION SLOTS.
- △ ON ASSEMBLIES WITH TWO OR THREE POSITIONS, ONE POLARIZATION SLOT.
- △ .000100 BRIGHT TIN OVER .000050 NICKEL.
- △ PRELIMINARY PART - NOT RELEASED FOR PRODUCTION.
- △ .000100 MATTE TIN OVER .000050 NICKEL.
- △ HIGH TEMPERATURE CONFIGURATION
- △ OBSOLETE PARTS: OBSOLETE CIS STREAMLINING PER D.RENAUD/D.SINISI



REMARKS	PLATING	C	B	A	NO. OF POSN	PART NO.
△	△	34.01 [2.500]	66.04 [2.600]	24	25	7-103634-4
△	△	81.47 [2.420]	63.50 [2.500]	23	24	7-103634-3
△	△	58.93 [2.320]	60.96 [2.400]	22	23	7-103634-2
△	△	56.39 [2.220]	58.42 [2.300]	21	22	7-103634-1
△	△	53.85 [2.120]	55.88 [2.200]	20	21	7-103634-0
△	△	48.27 [1.920]	50.80 [2.000]	18	19	6-103634-9
△	△	46.23 [1.820]	48.26 [1.900]	17	18	6-103634-8
△	△	43.69 [1.720]	45.72 [1.800]	16	17	6-103634-6
△	△	41.15 [1.620]	43.18 [1.700]	15	16	6-103634-5
△	△	38.61 [1.520]	40.64 [1.600]	14	15	6-103634-4
△	△	36.07 [1.420]	38.10 [1.500]	13	14	6-103634-3
△	△	33.53 [1.320]	35.56 [1.400]	12	13	6-103634-2
△	△	30.99 [1.220]	33.02 [1.300]	11	12	6-103634-1
△	△	28.45 [1.120]	30.48 [1.200]	10	11	6-103634-0
△	△	25.91 [1.020]	27.94 [1.100]	9	10	5-103634-9
△	△	23.37 [0.920]	25.40 [1.000]	8	9	5-103634-8
△	△	20.83 [0.820]	22.86 [0.900]	7	8	5-103634-7
△	△	18.29 [0.720]	20.32 [0.800]	6	7	5-103634-6
△	△	15.75 [0.620]	17.78 [0.700]	5	6	5-103634-5
△	△	13.21 [0.520]	15.24 [0.600]	4	5	5-103634-4
△	△	10.67 [0.420]	12.70 [0.500]	3	4	5-103634-3
△	△	8.13 [0.320]	10.16 [0.400]	2	3	5-103634-2
△	△	5.59 [0.220]	7.62 [0.300]	1	2	5-103634-1

PLATING	C	B	A	NO. OF POSN	PART NO.	
△	△	30.99 [1.220]	33.02 [1.300]	11	12	3-103634-4
△	△	28.45 [1.120]	30.48 [1.200]	9	10	3-103634-3
△	△	25.91 [1.020]	27.94 [1.100]	8	9	3-103634-2
△	△	23.37 [0.920]	25.40 [1.000]	6	7	3-103634-1
△	△	18.29 [0.720]	20.32 [0.800]	5	6	3-103634-0
△	△	15.75 [0.620]	17.78 [0.700]	1	2	2-103634-9
△	△	13.21 [0.520]	15.24 [0.600]	15	16	2-103634-8
△	△	10.67 [0.420]	12.70 [0.500]	4	5	2-103634-7
△	△	8.13 [0.320]	10.16 [0.400]	3	4	2-103634-6
△	△	5.59 [0.220]	7.62 [0.300]	2	3	2-103634-5
△	△	54.01 [2.120]	66.04 [2.600]	24	25	2-103634-4
△	△	51.47 [2.020]	63.50 [2.500]	23	24	2-103634-3
△	△	48.93 [1.920]	60.96 [2.400]	22	23	2-103634-2
△	△	46.39 [1.820]	58.42 [2.300]	21	22	2-103634-1
△	△	43.85 [1.720]	55.88 [2.200]	20	21	2-103634-0
△	△	38.27 [1.520]	50.80 [2.000]	18	19	1-103634-9
△	△	36.23 [1.420]	48.26 [1.900]	17	18	1-103634-8
△	△	33.69 [1.320]	45.72 [1.800]	16	17	1-103634-6
△	△	31.15 [1.220]	43.18 [1.700]	15	16	1-103634-5
△	△	28.61 [1.120]	40.64 [1.600]	14	15	1-103634-4
△	△	26.07 [1.020]	38.10 [1.500]	13	14	1-103634-3
△	△	23.53 [0.920]	35.56 [1.400]	12	13	1-103634-2
△	△	20.99 [0.820]	33.02 [1.300]	11	12	1-103634-1
△	△	18.45 [0.720]	30.48 [1.200]	10	11	1-103634-0
△	△	15.91 [0.620]	27.94 [1.100]	9	10	103634-9
△	△	13.37 [0.520]	25.40 [1.000]	8	9	103634-8
△	△	10.83 [0.420]	22.86 [0.900]	7	8	103634-7
△	△	8.29 [0.320]	20.32 [0.800]	6	7	103634-6
△	△	5.75 [0.220]	17.78 [0.700]	5	6	103634-5
△	△	3.21 [0.120]	15.24 [0.600]	4	5	103634-4
△	△	0.67 [0.020]	12.70 [0.500]	3	4	103634-3
△	△	0.13 [0.005]	10.16 [0.400]	2	3	103634-2
△	△	0.59 [0.020]	7.62 [0.300]	1	2	103634-1

THIS DRAWING IS A CONTROLLED DOCUMENT.

REVISED PER ECO-11-04587

TE Connectivity

HEADER ASSEMBLY, RIGHT ANGLE, SINGLE ROW, 2.54 [1.00] C/A, 0.64 [0.25] SD POST, WITH PLUN & LATCHING, AMPHINOX WTE.

114-25026

100779

100779