

4

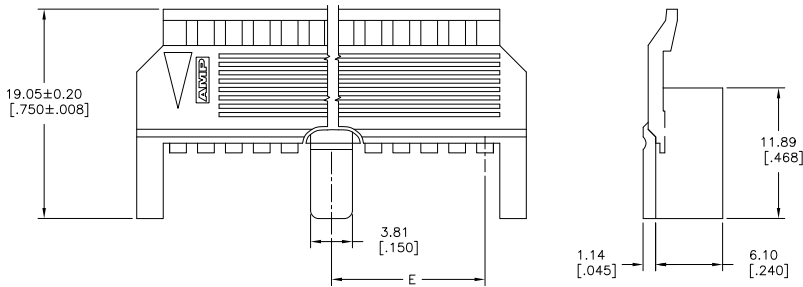
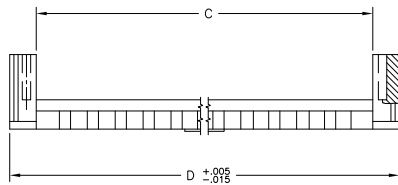
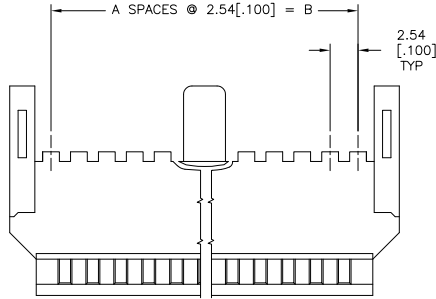
3

2

1

THIS DRAWING IS UNPUBLISHED. RELEASED FOR PUBLICATION. ALL RIGHTS RESERVED.

LOC	DIST	REVISIONS			
F	LNK	DESCRIPTION	DATE	BY	APPD
AD	39	H2	REVISED PER ECO-11-004820	11MAR11	RK HMR



- 1 NO. OF POSITIONS INDICATED PERTAINS TO THE HOUSING.
- 2 THIS COVER IS TO BE USED WITH 102536.
- 3 NO CENTER PART ON THIS PART.
- 4 OBSOLETE PART NUMBER.
- 5 MATERIAL: FLAME RETARDANT THERMOPLASTIC, COLOR-BLACK.
- 6 OBSOLETE PARTS: OBSOLETE CIS STREAMLINING PER D.RENAUD/D.SINISI

44.45 [1.750]	96.42 [3.796]	91.59 [3.606]	88.90 [3.500]	35	72	3-102537-4
43.18 [1.700]	93.88 [3.696]	89.05 [3.506]	86.36 [3.400]	34	70	3-102537-3
41.91 [1.650]	91.34 [3.596]	86.51 [3.406]	83.82 [3.300]	33	68	3-102537-2
40.64 [1.600]	88.79 [3.496]	83.97 [3.306]	81.28 [3.200]	32	66	3-102537-1
39.37 [1.550]	86.26 [3.396]	81.43 [3.206]	78.74 [3.100]	31	64	3-102537-0
38.10 [1.500]	83.72 [3.296]	78.89 [3.106]	76.20 [3.000]	30	62	2-102537-9
36.83 [1.450]	81.18 [3.196]	76.35 [3.006]	73.66 [2.900]	29	60	2-102537-8
35.56 [1.400]	78.63 [3.096]	78.81 [2.906]	71.12 [2.800]	28	58	2-102537-7
34.29 [1.350]	76.09 [2.996]	71.27 [2.806]	68.58 [2.700]	27	56	2-102537-6
33.02 [1.300]	73.55 [2.896]	68.73 [2.706]	66.04 [2.600]	26	54	2-102537-5
31.75 [1.250]	71.01 [2.796]	66.19 [2.606]	63.50 [2.500]	25	52	2-102537-4
30.48 [1.200]	68.48 [2.696]	63.65 [2.506]	60.96 [2.400]	24	50	2-102537-3
29.21 [1.150]	65.94 [2.596]	61.11 [2.406]	58.42 [2.300]	23	48	2-102537-2
27.94 [1.100]	63.39 [2.496]	58.57 [2.306]	55.88 [2.200]	22	46	2-102537-1
26.67 [1.050]	60.85 [2.396]	56.03 [2.206]	53.34 [2.100]	21	44	2-102537-0
25.40 [1.000]	58.31 [2.296]	53.49 [2.106]	50.80 [2.000]	20	42	1-102537-9
24.13 [0.950]	55.78 [2.196]	50.95 [2.006]	48.26 [1.900]	19	40	1-102537-8
22.86 [0.900]	53.24 [2.096]	48.41 [1.906]	45.72 [1.800]	18	38	1-102537-7
21.59 [0.850]	50.69 [1.996]	45.87 [1.806]	43.18 [1.700]	17	36	1-102537-6
20.32 [0.800]	48.15 [1.896]	43.33 [1.706]	40.64 [1.600]	16	34	1-102537-5
19.05 [0.750]	45.62 [1.796]	40.79 [1.606]	38.10 [1.500]	15	32	1-102537-4
17.78 [0.700]	43.07 [1.696]	38.25 [1.506]	35.56 [1.400]	14	30	1-102537-3
16.51 [0.650]	40.53 [1.596]	35.71 [1.406]	33.02 [1.300]	13	28	1-102537-2
15.24 [0.600]	37.99 [1.496]	33.17 [1.306]	30.48 [1.200]	12	26	1-102537-1
13.97 [0.550]	35.45 [1.396]	30.63 [1.206]	27.94 [1.100]	11	24	1-102537-0
12.70 [0.500]	32.92 [1.296]	28.09 [1.106]	25.40 [1.000]	10	22	102537-9
11.43 [0.450]	30.38 [1.196]	25.55 [1.006]	22.86 [0.900]	9	20	102537-8
10.16 [0.400]	27.84 [1.096]	23.01 [0.906]	20.32 [0.800]	8	18	102537-7
8.89 [0.350]	25.29 [0.996]	20.47 [0.806]	17.78 [0.700]	7	16	102537-6
7.62 [0.300]	22.76 [0.896]	17.93 [0.706]	15.24 [0.600]	6	14	102537-5
6.35 [0.250]	20.22 [0.796]	15.39 [0.606]	12.70 [0.500]	5	12	102537-4
5.08 [0.200]	17.68 [0.696]	12.85 [0.506]	10.16 [0.400]	4	10	102537-3
3.81 [0.150]	15.14 [0.596]	10.31 [0.406]	7.62 [0.300]	3	8	102537-2
2.54 [0.100]	12.59 [0.496]	7.77 [0.306]	5.08 [0.200]	2	6	102537-1

E	D	C	B	A	REF. NO. OF POSN	PART NUMBER

COVER DIMENSIONS

THIS DRAWING IS A CONTROLLED DOCUMENT.

DIMENSIONS: mm [INCHES] 0 P.L.C. ± .010 1 P.L.C. ± .010 2 P.L.C. ± .010 3 P.L.C. ± 0.15 [0.005] 4 P.L.C. ± .010 ANGLES: ± .5° FINISH:	TOLERANCES UNLESS OTHERWISE SPECIFIED: ± .010 ± .010 ± .010 ± 0.15 [0.005] ± .010 ± .5° ± .010	DESIGNED BY: RACHAVENDRA CHECKED BY: JEFFREY GESFORD APPROVED BY: JEFFREY GESFORD PRODUCT SPEC:	DATE: 08/20/09 SIZE: A2 ONE CODE DRAWING NO: 00779 CUSTOMER DRAWING:	NAME: JEFFREY GESFORD TITLE:	TE Connectivity COVER - HALF, LOW PROFILE MASS TERMINATION AMPMODU, .100CL, CENTER BAR POLARIZATION	RESTRICTED TO:
--	---	--	---	---------------------------------	--	----------------

SCALE: 4:1 SHEET 1 of 1 REV: H2