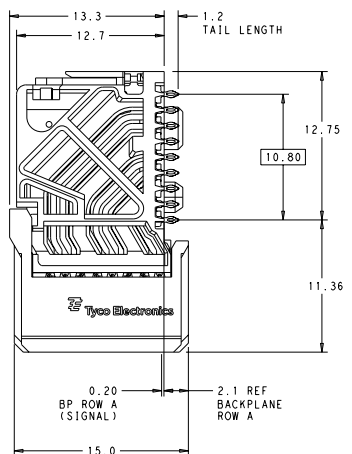
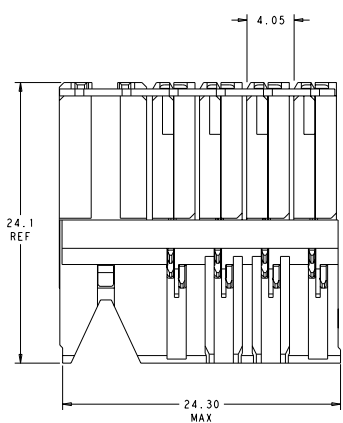
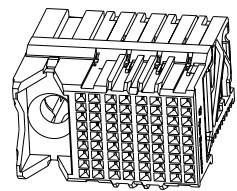


REV	DATE	DESCRIPTION	BY	CHK	APP
2		REVISED PER ECO-12-000423			

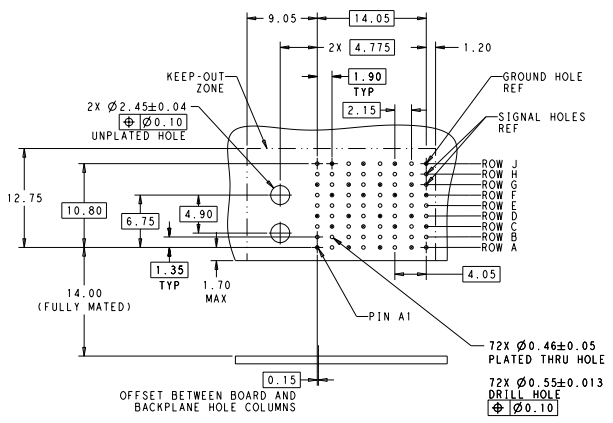
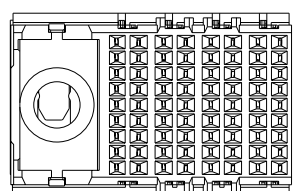


- △ MATERIAL:
HOUSING: LCP, GLASS FILLED, UL94V-0.
TERMINALS: HIGH PERFORMANCE COPPER ALLOY.
- △ FINISH:
30µ" SELECTIVE GOLD IN CONTACT AREA. SELECTIVE TIN ON PCB TAILS, NICKEL OVERALL.
- △ FINISH:
30µ" SELECTIVE GOLD IN CONTACT AREA. SELECTIVE TIN-LEAD ON PCB TAILS, NICKEL OVERALL.



SCALE 4:1

REFER TO WWW.TE.COM FOR PRODUCT AVAILABILITY



RECOMMENDED PCB LAYOUT
MIN BOARD THICKNESS 1.0

DESIGN APPROVED THIS PRINT IS
PRELIMINARY
TO FIRST PIECE APPROVAL
CONTACT PRODUCT ENGINEERING
BEFORE USING THIS PRINT

NONE	△	2132443-5
NONE	△	2132443-1
KEY POSITION	FINISH	PART NUMBER

THIS DRAWING IS A CONTROLLED DOCUMENT.		REV. 1	DATE 25/02/2011		TE CONTACT CENTER
DESIGNED BY	DESIGNED BY	DESIGNED BY	DESIGNED BY		IMPACT, ORTHOGONAL 3 PAIR DAUGHTERCARD 8 COLUMN LEFT GUIDED SIGNAL MODULE, 0.46 EYELET
DATE	DATE	DATE	DATE	STATE SCALE CODE (RELATIVE TO)	REVISIONS TO
DATE	DATE	DATE	DATE	A 00779 @ 2132443	SHEET 1 OF 2
DATE	DATE	DATE	DATE	CUSTOMER DRAWING	PAGE 6-11