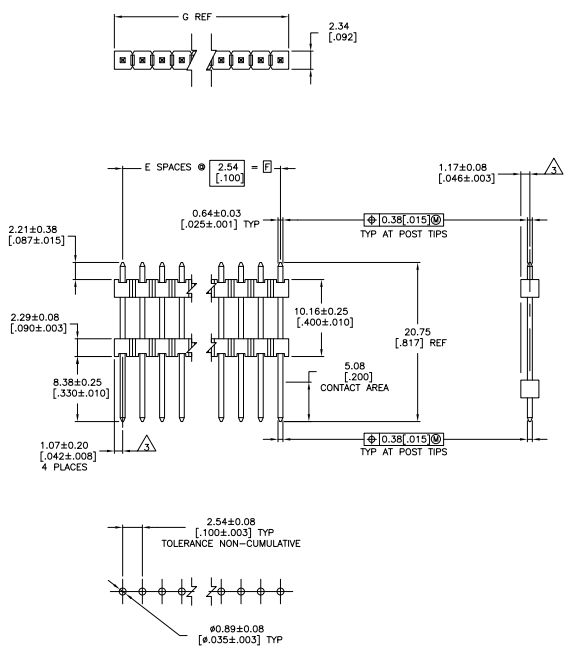


| REV | DATE | DESCRIPTION | BY | CHK |
|-------|------|---------------------------|----|-----|
| AD 00 | | REVISED PER EDD-11-004587 | | |



RECOMMENDED HOLE LAYOUT

- ASSEMBLY MAY BE BROKEN TO THE DESIRED NUMBER OF POSITIONS
 - TRUE POSITION TOLERANCE OF THE POST TIPS APPLIES WHEN THE HEADER IS HELD FLAT AGAINST THE PRINTED CIRCUIT BOARD
- THE NOTED DIMENSIONS APPLY AT THE INTERSECTION OF THE POST AND HOUSING
- HOUSING: FLAME RETARDANT THERMOPLASTIC; COLOR: BLACK.
- FINISH: 0.000381 [0.00015] GOLD ON CONTACT AREA, 0.00254-0.00508 [0.00100-0.00200] MATTE TIN-LEAD ON SOLDER TAIL, ALL OVER 0.00127 [0.00050] NICKEL.
- FINISH: 0.000381 [0.00015] GOLD ON CONTACT AREA, 0.00254-0.00508 [0.00100-0.00200] MATTE TIN-LEAD ON SOLDER TAIL, ALL OVER 0.00127 [0.00050] NICKEL.

| PLATING | G | F | E | NO. OF POSITIONS | PART NUMBER |
|---------|--------|-------|----|------------------|-------------|
| △ | 101.19 | 99.06 | 39 | 40 | 9-146464-0 |
| △ | 98.85 | 96.52 | 38 | 39 | 8-146464-9 |
| △ | 96.11 | 93.98 | 37 | 38 | 8-146464-8 |
| △ | 93.57 | 91.44 | 36 | 37 | 8-146464-7 |
| △ | 91.03 | 88.90 | 35 | 36 | 8-146464-6 |
| △ | 88.49 | 86.36 | 34 | 35 | 8-146464-5 |
| △ | 85.95 | 83.82 | 33 | 34 | 8-146464-4 |
| △ | 83.41 | 81.28 | 32 | 33 | 8-146464-3 |
| △ | 80.87 | 78.74 | 31 | 32 | 8-146464-2 |
| △ | 78.33 | 76.20 | 30 | 31 | 8-146464-1 |
| △ | 75.79 | 73.66 | 29 | 30 | 8-146464-0 |
| △ | 73.25 | 71.12 | 28 | 29 | 7-146464-9 |
| △ | 70.71 | 68.58 | 27 | 28 | 7-146464-8 |
| △ | 68.17 | 66.04 | 26 | 27 | 7-146464-7 |
| △ | 65.63 | 63.50 | 25 | 26 | 7-146464-6 |
| △ | 63.09 | 60.96 | 24 | 25 | 7-146464-5 |
| △ | 60.55 | 58.42 | 23 | 24 | 7-146464-4 |
| △ | 58.01 | 55.88 | 22 | 23 | 7-146464-3 |
| △ | 55.47 | 53.34 | 21 | 22 | 7-146464-2 |
| △ | 52.93 | 50.80 | 20 | 21 | 7-146464-1 |
| △ | 50.39 | 48.26 | 19 | 20 | 7-146464-0 |
| △ | 47.85 | 45.72 | 18 | 19 | 6-146464-9 |
| △ | 45.31 | 43.18 | 17 | 18 | 6-146464-8 |
| △ | 42.77 | 40.64 | 16 | 17 | 6-146464-7 |
| △ | 40.23 | 38.10 | 15 | 16 | 6-146464-6 |
| △ | 37.69 | 35.56 | 14 | 15 | 6-146464-5 |
| △ | 35.15 | 33.02 | 13 | 14 | 6-146464-4 |
| △ | 32.61 | 30.48 | 12 | 13 | 6-146464-3 |
| △ | 30.07 | 27.94 | 11 | 12 | 6-146464-2 |
| △ | 27.53 | 25.40 | 10 | 11 | 6-146464-1 |
| △ | 24.99 | 22.86 | 9 | 10 | 6-146464-0 |
| △ | 22.45 | 20.32 | 8 | 9 | 5-146464-9 |
| △ | 19.91 | 17.78 | 7 | 8 | 5-146464-8 |
| △ | 17.37 | 15.24 | 6 | 7 | 5-146464-7 |
| △ | 14.83 | 12.70 | 5 | 6 | 5-146464-6 |
| △ | 12.29 | 10.16 | 4 | 5 | 5-146464-5 |
| △ | 9.75 | 7.62 | 3 | 4 | 5-146464-4 |
| △ | 7.21 | 5.08 | 2 | 3 | 5-146464-3 |
| △ | 4.67 | 2.54 | 1 | 2 | 5-146464-2 |
| △ | 2.13 | 0.00 | 1 | 1 | 5-146464-1 |

| PLATING | G | F | E | NO. OF POSITIONS | PART NUMBER |
|---------|--------|-------|----|------------------|-------------|
| △ | 101.19 | 99.06 | 39 | 40 | 4-146464-0 |
| △ | 98.85 | 96.52 | 38 | 39 | 3-146464-9 |
| △ | 96.11 | 93.98 | 37 | 38 | 3-146464-8 |
| △ | 93.57 | 91.44 | 36 | 37 | 3-146464-7 |
| △ | 91.03 | 88.90 | 35 | 36 | 3-146464-6 |
| △ | 88.49 | 86.36 | 34 | 35 | 3-146464-5 |
| △ | 85.95 | 83.82 | 33 | 34 | 3-146464-4 |
| △ | 83.41 | 81.28 | 32 | 33 | 3-146464-3 |
| △ | 80.87 | 78.74 | 31 | 32 | 3-146464-2 |
| △ | 78.33 | 76.20 | 30 | 31 | 3-146464-1 |
| △ | 75.79 | 73.66 | 29 | 30 | 3-146464-0 |
| △ | 73.25 | 71.12 | 28 | 29 | 2-146464-9 |
| △ | 70.71 | 68.58 | 27 | 28 | 2-146464-8 |
| △ | 68.17 | 66.04 | 26 | 27 | 2-146464-7 |
| △ | 65.63 | 63.50 | 25 | 26 | 2-146464-6 |
| △ | 63.09 | 60.96 | 24 | 25 | 2-146464-5 |
| △ | 60.55 | 58.42 | 23 | 24 | 2-146464-4 |
| △ | 58.01 | 55.88 | 22 | 23 | 2-146464-3 |
| △ | 55.47 | 53.34 | 21 | 22 | 2-146464-2 |
| △ | 52.93 | 50.80 | 20 | 21 | 2-146464-1 |
| △ | 50.39 | 48.26 | 19 | 20 | 2-146464-0 |
| △ | 47.85 | 45.72 | 18 | 19 | 1-146464-9 |
| △ | 45.31 | 43.18 | 17 | 18 | 1-146464-8 |
| △ | 42.77 | 40.64 | 16 | 17 | 1-146464-7 |
| △ | 40.23 | 38.10 | 15 | 16 | 1-146464-6 |
| △ | 37.69 | 35.56 | 14 | 15 | 1-146464-5 |
| △ | 35.15 | 33.02 | 13 | 14 | 1-146464-4 |
| △ | 32.61 | 30.48 | 12 | 13 | 1-146464-3 |
| △ | 30.07 | 27.94 | 11 | 12 | 1-146464-2 |
| △ | 27.53 | 25.40 | 10 | 11 | 1-146464-1 |
| △ | 24.99 | 22.86 | 9 | 10 | 1-146464-0 |
| △ | 22.45 | 20.32 | 8 | 9 | 146464-9 |
| △ | 19.91 | 17.78 | 7 | 8 | 146464-8 |
| △ | 17.37 | 15.24 | 6 | 7 | 146464-7 |
| △ | 14.83 | 12.70 | 5 | 6 | 146464-6 |
| △ | 12.29 | 10.16 | 4 | 5 | 146464-5 |
| △ | 9.75 | 7.62 | 3 | 4 | 146464-4 |
| △ | 7.21 | 5.08 | 2 | 3 | 146464-3 |
| △ | 4.67 | 2.54 | 1 | 2 | 146464-2 |
| △ | 2.13 | 0.00 | 1 | 1 | 146464-1 |

THIS DRAWING IS A CONTROLLED DOCUMENT. THE INFORMATION CONTAINED HEREIN IS UNCLASSIFIED EXCEPT WHERE SHOWN OTHERWISE.

DATE: 10/07/99

REVISED PER EDD-11-004587

TE Connectivity

HEADER ASSEMBLY, MOD II, STACKING, SINGLE ROW, .025 SQ. POST, UNSHROUDED

SEE TABLE

CUSTOMER DRAWING

REVISED PER EDD-11-004587

DATE: 10/07/99

REVISED PER EDD-11-004587