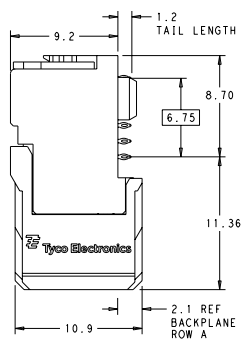
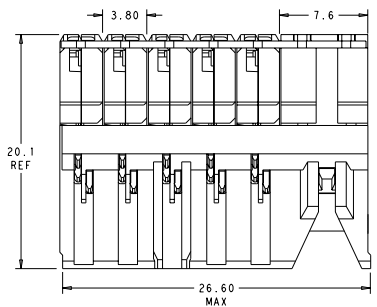
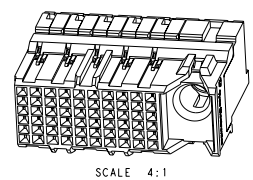


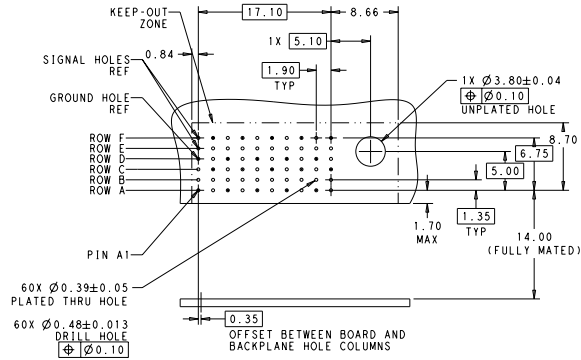
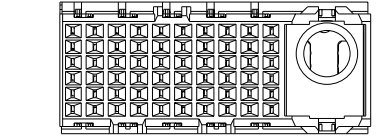
REV	DATE	DESCRIPTION	BY	CHK	APP
AD	00				
C		REVISED PER ECO-12-000416			



- ⚠ MATERIAL:
HOUSING: LCP, GLASS FILLED, UL94V-0.
TERMINALS: HIGH PERFORMANCE COPPER ALLOY.
 - ⚠ FINISH:
30µ" SELECTIVE GOLD IN CONTACT AREA. SELECTIVE TIN ON PCB TAILS, NICKEL OVERALL.
 - ⚠ FINISH:
30µ" SELECTIVE GOLD IN CONTACT AREA. SELECTIVE TIN-LEAD ON PCB TAILS, NICKEL OVERALL.
4. CONNECTORS SUPPLIED WITH MOUNTING SCREWS.



REFER TO WWW.TE.COM FOR PRODUCT AVAILABILITY



RECOMMENDED PCB LAYOUT MIN BOARD THICKNESS 1.6

NONE	⚠	2057404-5
NONE	⚠	2057404-1
KEY POSITION	FINISH	PART NUMBER

THIS DRAWING IS A CONTROLLED DOCUMENT.		REV. 00	DATE 19AUG2016	BY AD	CHK AD	APP
DESIGNED BY	DESIGNED DATE	REV. 00	DATE 19AUG2016	BY AD	CHK AD	APP
DATE 19AUG2016	BY AD	CHK AD	APP	TE Connectivity		
MATERIAL: SEE TABLE			REV. 00	DATE 19AUG2016	BY AD	CHK AD
CUSTOMER DRAWING			REV. 00	DATE 19AUG2016	BY AD	CHK AD
IMPACT, STD. R/A, 2 PAIR, 10 COLUMN, DAUGHTERCARD, RIGHT GUIDED SIGNAL MODULE, 0.39 EYELET			REV. 00	DATE 19AUG2016	BY AD	CHK AD
A 00779 2057404			REV. 00	DATE 19AUG2016	BY AD	CHK AD
PAGE 6:1			REV. 00	DATE 19AUG2016	BY AD	CHK AD