

4

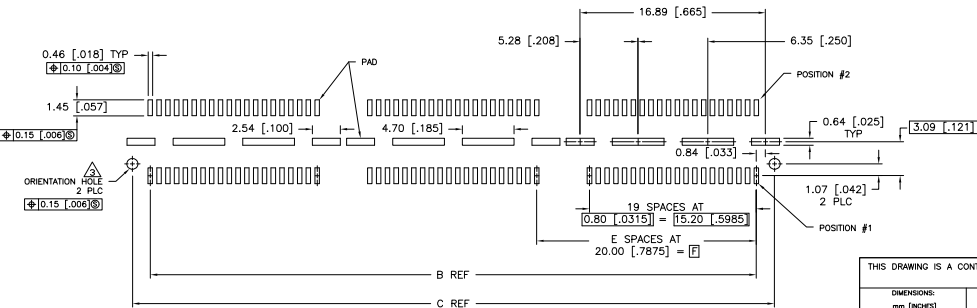
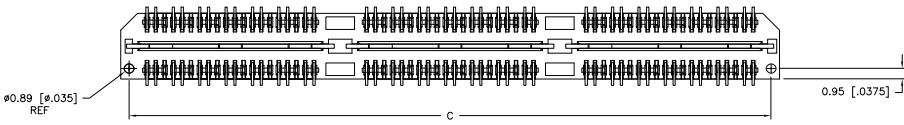
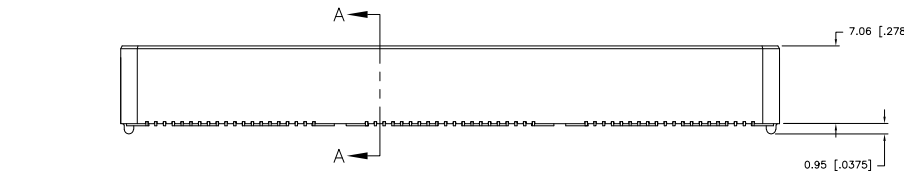
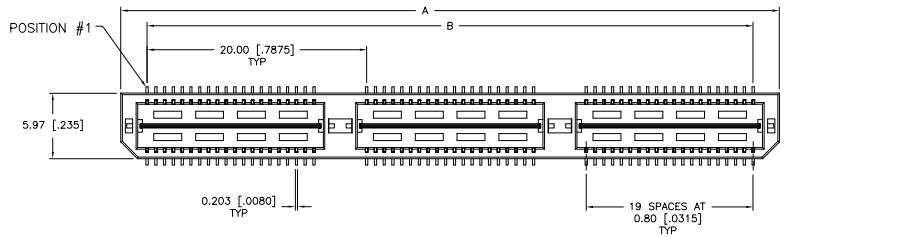
3

2

1

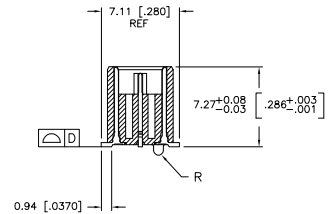
THIS DRAWING IS UNPUBLISHED. RELEASED FOR PUBLICATION
 © COPYRIGHT BY TYCO ELECTRONICS CORPORATION. ALL RIGHTS RESERVED.

LOC	DIST	REVISIONS			
F	LTR	DESCRIPTION	DATE	BY	APPD
AD	00	G	REVISED PER EC 0512-0273-05	19SEP05	JDP DD

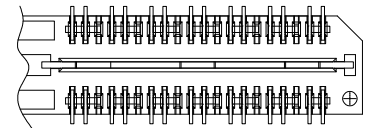


RECOMMENDED PC BOARD LAYOUT
 (VIEWED FROM CONNECTOR SIDE)

- 1 HOUSING: LCP, BLACK.
CONTACT & GROUND PLANE: PHOS BRONZE.
- 2 CONTACT PLATING: SELECT 0.76 MICROMETERS (.000030 IN) MIN GOLD.
- 3 FOR STANDARD APPLICATIONS, ORIENTATION HOLE TO BE ø1.02 [ø.0400].



SECTION A-A



DIFFERENTIAL PAIR LOADING
 (BOTTOM VIEW)
 SCALE 2:1

THIS DRAWING IS A CONTROLLED DOCUMENT.		DIM: B. CARBO 27MAV03 CHK: D. DIXON 27MAV03 APPD: D. DIXON 27MAV03 PRODUCT SPEC: -- APPLICATION SPEC: -- WEIGHT: -- FINISH: --	Tyco Electronics Tyco Electronics Corporation Harrisburg, PA 17105-3608
DIMENSIONS: mm [INCHES] TO MANUFACTURER'S DIMENSIONS UNLESS SPECIFIED: 0 PLC ± .1 1 PLC ± 0.3(0.1) 2 PLC ± 0.15(0.05) 3 PLC ± 0.08(0.025) 4 PLC ± .1 ANGLE ± .5° MATERIAL: -- FINISH: --	NAME: -- HEADER ASSEMBLY, 8.0MM [.315] VERTICAL, 0.80MM CL, MICTOR SB	SIZE: A2 CASE CODE: 00779 DRAWING NO: 1658464 RESTRICTED TO: -- SCALE: 3:1 SHEET: 1 of 2 REV: G	
CUSTOMER DRAWING			

AMP 1471-9 REV 31MAR2000

1658464

A

4

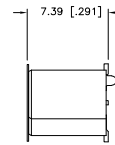
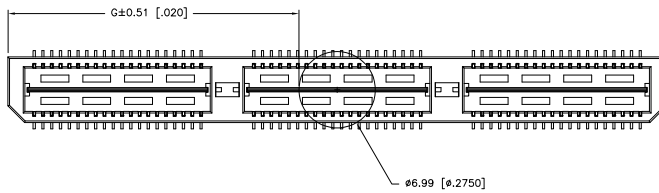
3

2

1

THIS DRAWING IS UNPUBLISHED. RELEASED FOR PUBLICATION
 © COPYRIGHT BY TYCO ELECTRONICS CORPORATION. ALL RIGHTS RESERVED.

LOC	QTY	REV	DESCRIPTION	DATE	BY	APP
AD	00					
			SEE SHEET 1			



28.52(1.044)	40.00(1.575)	2	0.102(0.040)	58.50(2.303)	55.20(2.173)	60.00(2.362)	YES	POCKET TAPE	YES	84	7-1658464-3	
16.51(1.650)	20.00(787.4)	1	0.102(0.040)	38.48(1.515)	35.20(1.386)	40.00(1.575)	YES	POCKET TAPE	YES	56	7-1658464-2	
6.50(256)	0(,000)	0	0.102(0.040)	18.49(728)	15.20(598)	20.00(787)	YES	POCKET TAPE	YES	28	7-1658464-1	
28.52(1.044)	40.00(1.575)	2	0.102(0.040)	58.50(2.303)	55.20(2.173)	60.00(2.362)	YES	POCKET TAPE	NO	120	8-1658464-3	
16.51(1.650)	20.00(787.4)	1	0.102(0.040)	38.48(1.515)	35.20(1.386)	40.00(1.575)	YES	POCKET TAPE	NO	80	8-1658464-2	
6.50(256)	0(,000)	0	0.102(0.040)	18.49(728)	15.20(598)	20.00(787)	YES	POCKET TAPE	NO	40	8-1658464-1	
-	40.00(1.575)	2	0.102(0.040)	58.50(2.303)	55.20(2.173)	60.00(2.362)	NO	POCKET TAPE	YES	84	5-1658464-3	
-	20.00(787.4)	1	0.102(0.040)	38.48(1.515)	35.20(1.386)	40.00(1.575)	NO	POCKET TAPE	YES	56	5-1658464-2	
-	0(,000)	0	0.102(0.040)	18.49(728)	15.20(598)	20.00(787)	NO	POCKET TAPE	YES	28	5-1658464-1	
-	40.00(1.575)	2	0.102(0.040)	58.50(2.303)	55.20(2.173)	60.00(2.362)	NO	POCKET TAPE	NO	120	4-1658464-3	
-	20.00(787.4)	1	0.102(0.040)	38.48(1.515)	35.20(1.386)	40.00(1.575)	NO	POCKET TAPE	NO	80	4-1658464-2	
-	0(,000)	0	0.102(0.040)	18.49(728)	15.20(598)	20.00(787)	NO	POCKET TAPE	NO	40	4-1658464-1	
48.51(1.831)	80.00(3.150)	4	0.152(0.060)	98.50(3.748)	95.20(3.748)	100.00(3.937)	YES	TRAY	YES	140	3-1658464-5	
38.53(1.438)	80.00(3.150)	3	0.152(0.060)	78.49(3.090)	75.20(2.961)	80.00(3.150)	YES	TRAY	YES	112	3-1658464-4	
28.52(1.044)	40.00(1.575)	2	0.102(0.040)	58.50(2.303)	55.20(2.173)	60.00(2.362)	YES	TRAY	YES	84	3-1658464-3	
16.51(1.650)	20.00(787.4)	1	0.102(0.040)	38.48(1.515)	35.20(1.386)	40.00(1.575)	YES	TRAY	YES	56	3-1658464-2	
6.50(256)	0(,000)	0	0.102(0.040)	18.49(728)	15.20(598)	20.00(787)	YES	TRAY	YES	28	3-1658464-1	
48.51(1.831)	80.00(3.150)	4	0.152(0.060)	98.50(3.748)	95.20(3.748)	100.00(3.937)	YES	TRAY	NO	200	2-1658464-5	
38.53(1.438)	80.00(3.150)	3	0.152(0.060)	78.49(3.090)	75.20(2.961)	80.00(3.150)	YES	TRAY	NO	160	2-1658464-4	
28.52(1.044)	40.00(1.575)	2	0.102(0.040)	58.50(2.303)	55.20(2.173)	60.00(2.362)	YES	TRAY	NO	120	2-1658464-3	
16.51(1.650)	20.00(787.4)	1	0.102(0.040)	38.48(1.515)	35.20(1.386)	40.00(1.575)	YES	TRAY	NO	80	2-1658464-2	
6.50(256)	0(,000)	0	0.102(0.040)	18.49(728)	15.20(598)	20.00(787)	YES	TRAY	NO	40	2-1658464-1	
-	80.00(3.150)	4	0.152(0.060)	98.50(3.748)	95.20(3.748)	100.00(3.937)	NO	TRAY	YES	140	1-1658464-5	
-	60.00(2.362)	3	0.152(0.060)	78.49(3.090)	75.20(2.961)	80.00(3.150)	NO	TRAY	YES	112	1-1658464-4	
-	40.00(1.575)	2	0.102(0.040)	58.50(2.303)	55.20(2.173)	60.00(2.362)	NO	TRAY	YES	84	1-1658464-3	
-	20.00(787.4)	1	0.102(0.040)	38.48(1.515)	35.20(1.386)	40.00(1.575)	NO	TRAY	YES	56	1-1658464-2	
-	0(,000)	0	0.102(0.040)	18.49(728)	15.20(598)	20.00(787)	NO	TRAY	YES	28	1-1658464-1	
-	80.00(3.150)	4	0.152(0.060)	98.50(3.748)	95.20(3.748)	100.00(3.937)	NO	TRAY	NO	200	1658464-5	
-	60.00(2.362)	3	0.152(0.060)	78.49(3.090)	75.20(2.961)	80.00(3.150)	NO	TRAY	NO	160	1658464-4	
-	40.00(1.575)	2	0.102(0.040)	58.50(2.303)	55.20(2.173)	60.00(2.362)	NO	TRAY	NO	120	1658464-3	
-	20.00(787.4)	1	0.102(0.040)	38.48(1.515)	35.20(1.386)	40.00(1.575)	NO	TRAY	NO	80	1658464-2	
-	0(,000)	0	0.102(0.040)	18.49(728)	15.20(598)	20.00(787)	NO	TRAY	NO	40	1658464-1	
G	F	E	D	C	B	A		POLYIMIDE FILM PAD	PACKAGING TYPE	DIFF. PAIR	NO OF POS	PART NUMBER

THIS DRAWING IS A CONTROLLED DOCUMENT.

DIMENSIONS: mm [INCHES]
 TOLERANCES UNLESS OTHERWISE SPECIFIED:
 0 PLC ± .01
 1 PLC ± 0.01
 2 PLC ± 0.01
 3 PLC ± 0.01
 4 PLC ± 0.01
 ANGLE ± .5°
 FINISH SEE SHEET 1

DWG: B. CARBO 27MAY03
 CHK: D. DIXON 27MAY03
 APPR: D. DIXON 27MAY03
 PRODUCT SPEC: APPLICATION SPEC

CUSTOMER DRAWING
 SCALE: 3:1 SHEET: 2 of 2 REV: G

Tyco Electronics Corporation
 Harrisburg, PA 17105-3608
 0.80MM CL. MICTOR SB
 SIZE: A2 CASE CODE: 00779 DRAWING NO: 1658464
 RESTRICTED TO: