

4

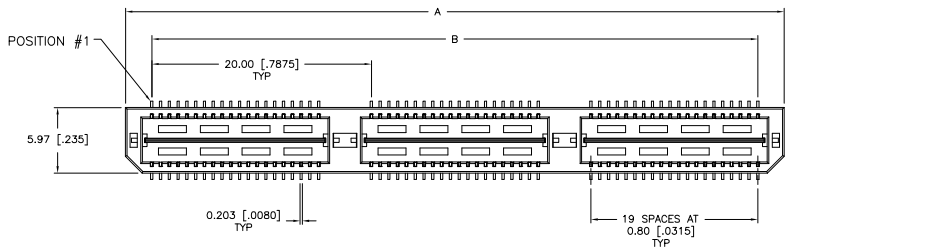
3

2

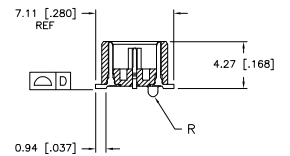
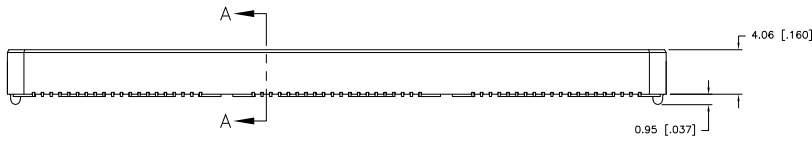
1

THIS DRAWING IS UNPUBLISHED. RELEASED FOR PUBLICATION  
 © COPYRIGHT BY TYCO ELECTRONICS CORPORATION. ALL RIGHTS RESERVED.

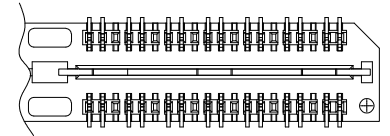
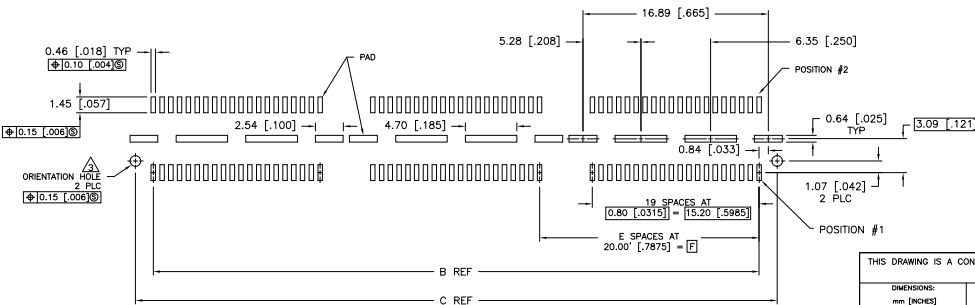
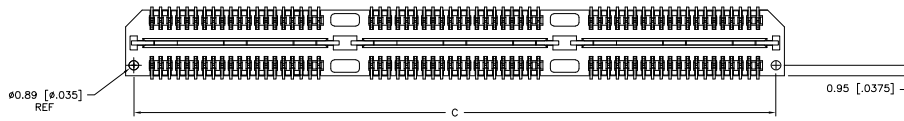
LOC		DIBT		REVISIONS		
F	LTR	DESCRIPTION	DATE	BY	APP'D	
G		REVISED PER EC 0512-0273-05	19SEP05	JDP	DD	



- ⚠ HOUSING: LCP, BLACK.  
CONTACT & GROUND PLANE: PHOS BRONZE.
- ⚠ CONTACT PLATING: SELECT 0.76 MICROMETERS (.000030 IN) MIN GOLD.
- ⚠ FOR STANDARD APPLICATIONS, ORIENTATION HOLE TO BE  $\phi 1.02$  [ $\phi 0.400$ ].



SECTION A-A



DIFFERENTIAL PAIR LOADING (BOTTOM VIEW) SCALE 2:1

RECOMMENDED PC BOARD LAYOUT (VIEWED FROM CONNECTOR SIDE)

THIS DRAWING IS A CONTROLLED DOCUMENT.		DWG: B. CARBO 27MAY03 CHK: D. DIXON 27MAY03 APP'D: D. DIXON 27MAY03 PRODUCT SPEC: -- APPLICATION SPEC: -- WEIGHT: -- MATERIAL: -- FINISH: --	<b>Tyco Electronics</b> Tyco Electronics Corporation Harrisburg, PA 17105-3608 NAME: -- SIZE: A2 CAGE CODE: 00779 DRAWING NO: 1658463 RESTRICTED TO: -- SCALE: 3:1 SHEET: 1 of 2 REV: G
--	--	---	---

AMP 1471-9 REV 31MAR2000

1658463

A

4

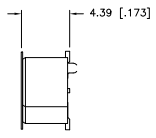
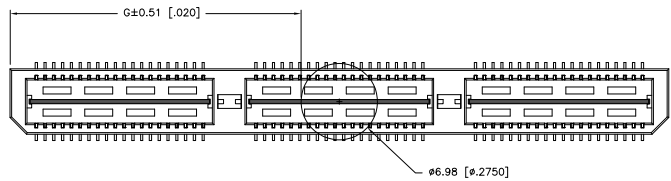
3

2

1

THIS DRAWING IS UNPUBLISHED. RELEASED FOR PUBLICATION  
 © COPYRIGHT BY TYCO ELECTRONICS CORPORATION. ALL RIGHTS RESERVED.

LOC	DIST	REVISIONS					
AD	00	P	LTR	DESCRIPTION	DATE	BY	APP
				SEE SHEET 1			



26 52(1.044)	40 00(1.575)	2	0.102(0.040)	58 50(2.303)	55.20(2.173)	60.00(2.362)	YES	POCKET TAPE	YES	84	7-1658463-3	
16 51(650)	20 00(7874)	1	0.102(0.040)	38 48(1.515)	35.20(1.386)	40.00(1.575)	YES	POCKET TAPE	YES	56	7-1658463-2	
6 50(256)	0(000)	0	0.102(0.040)	18 48(728)	15.20(598)	20.00(787)	YES	POCKET TAPE	YES	28	7-1658463-1	
26 52(1.044)	40 00(1.575)	2	0.102(0.040)	58 50(2.303)	55.20(2.173)	60.00(2.362)	YES	POCKET TAPE	NO	120	6-1658463-3	
16 51(650)	20 00(7874)	1	0.102(0.040)	38 48(1.515)	35.20(1.386)	40.00(1.575)	YES	POCKET TAPE	NO	80	6-1658463-2	
6 50(256)	0(000)	0	0.102(0.040)	18 48(728)	15.20(598)	20.00(787)	YES	POCKET TAPE	NO	40	6-1658463-1	
-	40 00(1.575)	2	0.102(0.040)	58 50(2.303)	55.20(2.173)	60.00(2.362)	NO	POCKET TAPE	YES	84	5-1658463-3	
-	20 00(7874)	1	0.102(0.040)	38 48(1.515)	35.20(1.386)	40.00(1.575)	NO	POCKET TAPE	YES	56	5-1658463-2	
-	0(000)	0	0.102(0.040)	18 48(728)	15.20(598)	20.00(787)	NO	POCKET TAPE	YES	28	5-1658463-1	
-	40 00(1.575)	2	0.102(0.040)	58 50(2.303)	55.20(2.173)	60.00(2.362)	NO	POCKET TAPE	NO	120	4-1658463-3	
-	20 00(7874)	1	0.102(0.040)	38 48(1.515)	35.20(1.386)	40.00(1.575)	NO	POCKET TAPE	NO	80	4-1658463-2	
-	0(000)	0	0.102(0.040)	18 48(728)	15.20(598)	20.00(787)	NO	POCKET TAPE	NO	40	4-1658463-1	
46 51(1.831)	80 00(3.150)	4	0.152(0.060)	98 50(3.748)	95.20(3.748)	100.00(3.937)	YES	TRAY	YES	140	3-1658463-5	
36 53(1.438)	60 00(2.362)	3	0.152(0.060)	78 48(3.090)	75.20(2.961)	80.00(3.150)	YES	TRAY	YES	112	3-1658463-4	
26 52(1.044)	40 00(1.575)	2	0.102(0.040)	58 50(2.303)	55.20(2.173)	60.00(2.362)	YES	TRAY	YES	84	3-1658463-3	
16 51(650)	20 00(7874)	1	0.102(0.040)	38 48(1.515)	35.20(1.386)	40.00(1.575)	YES	TRAY	YES	56	3-1658463-2	
6 50(256)	0(000)	0	0.102(0.040)	18 48(728)	15.20(598)	20.00(787)	YES	TRAY	YES	28	3-1658463-1	
46 51(1.831)	80 00(3.150)	4	0.152(0.060)	98 50(3.748)	95.20(3.748)	100.00(3.937)	YES	TRAY	NO	200	2-1658463-5	
36 53(1.438)	60 00(2.362)	3	0.152(0.060)	78 48(3.090)	75.20(2.961)	80.00(3.150)	YES	TRAY	NO	160	2-1658463-4	
26 52(1.044)	40 00(1.575)	2	0.102(0.040)	58 50(2.303)	55.20(2.173)	60.00(2.362)	YES	TRAY	NO	120	2-1658463-3	
16 51(650)	20 00(7874)	1	0.102(0.040)	38 48(1.515)	35.20(1.386)	40.00(1.575)	YES	TRAY	NO	80	2-1658463-2	
6 50(256)	0(000)	0	0.102(0.040)	18 48(728)	15.20(598)	20.00(787)	YES	TRAY	NO	40	2-1658463-1	
-	80 00(3.150)	4	0.152(0.060)	98 50(3.748)	95.20(3.748)	100.00(3.937)	NO	TRAY	YES	140	1-1658463-5	
-	60 00(2.362)	3	0.152(0.060)	78 48(3.090)	75.20(2.961)	80.00(3.150)	NO	TRAY	YES	112	1-1658463-4	
-	40 00(1.575)	2	0.102(0.040)	58 50(2.303)	55.20(2.173)	60.00(2.362)	NO	TRAY	YES	84	1-1658463-3	
-	20 00(7874)	1	0.102(0.040)	38 48(1.515)	35.20(1.386)	40.00(1.575)	NO	TRAY	YES	56	1-1658463-2	
-	0(000)	0	0.102(0.040)	18 48(728)	15.20(598)	20.00(787)	NO	TRAY	YES	28	1-1658463-1	
-	80 00(3.150)	4	0.152(0.060)	98 50(3.748)	95.20(3.748)	100.00(3.937)	NO	TRAY	NO	200	1658463-5	
-	60 00(2.362)	3	0.152(0.060)	78 48(3.090)	75.20(2.961)	80.00(3.150)	NO	TRAY	NO	160	1658463-4	
-	40 00(1.575)	2	0.102(0.040)	58 50(2.303)	55.20(2.173)	60.00(2.362)	NO	TRAY	NO	120	1658463-3	
-	20 00(7874)	1	0.102(0.040)	38 48(1.515)	35.20(1.386)	40.00(1.575)	NO	TRAY	NO	80	1658463-2	
-	0(000)	0	0.102(0.040)	18 48(728)	15.20(598)	20.00(787)	NO	TRAY	NO	40	1658463-1	
G	F	E	D	C	B	A		POLYIMIDE	PACKAGING	DIFF	NO OF PART	
								FILM PAD	TYPE	PAIR	POS	NUMBER

THIS DRAWING IS A CONTROLLED DOCUMENT.

DIMENSIONS: mm [INCHES]	TO DIMENSIONS UNLESS OTHERWISE SPECIFIED: 0 PLG ± .010 1 PLG ± .015 2 PLG ± .020 3 PLG ± .025 4 PLG ± .030 ANGLES ± .5°	DWG: B. CARBO 27MAY03 CHK: D. DIXON 27MAY03 APPR: D. DIXON 27MAY03 NAME: Tyco Electronics Corporation HARRISBURG, PA 17105-3608 APPLICATION SPEC: _____ SIZE: A2 CASE CODE: 00779 DRAWING NO: 1658463 RESTRICTED TO: _____ CUSTOMER DRAWING SCALE: 3:1 SHEET 2 of 2 REV G
-------------------------	---	--

1658463

A