

4

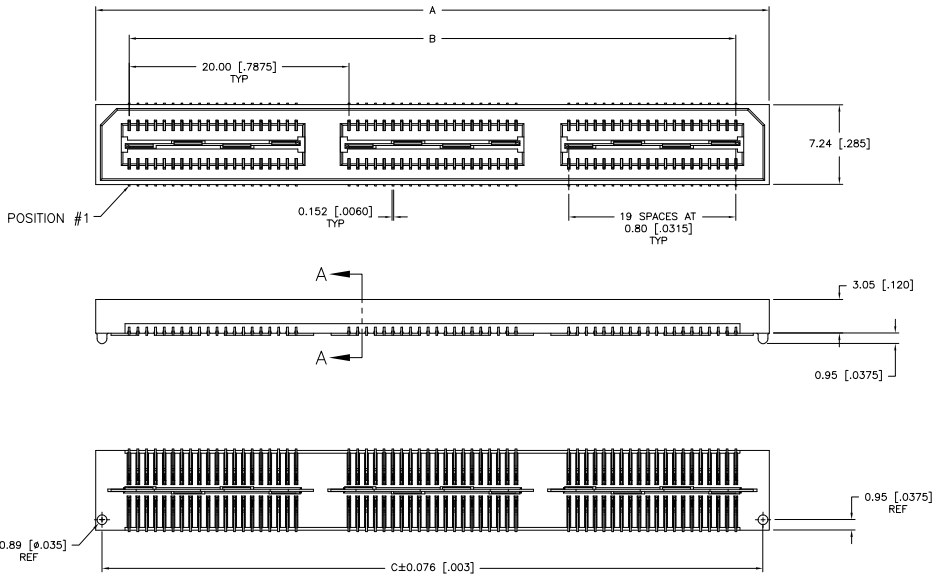
3

2

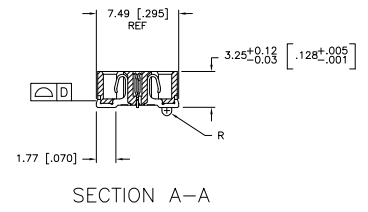
1

THIS DRAWING IS UNPUBLISHED. RELEASED FOR PUBLICATION  
 BY TYCO ELECTRONICS CORPORATION. ALL RIGHTS RESERVED.

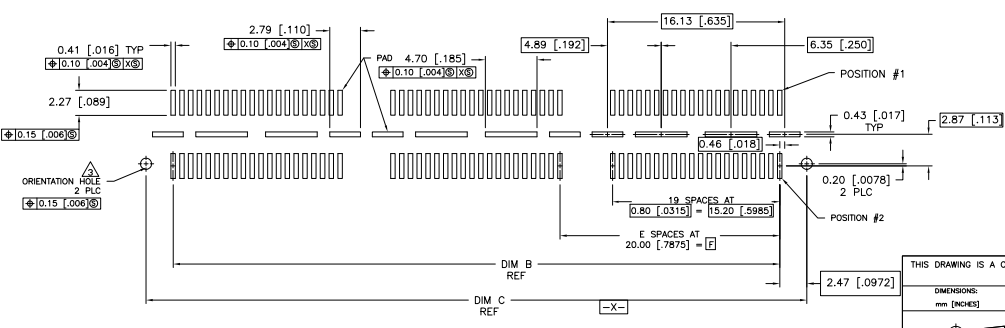
LOC		DIBT		REVISIONS			
AD	00	F	LTR	DESCRIPTION	DATE	BY	APP'D
		K		REV PER EC 0512-0310-05	11OCT05	BC	DD



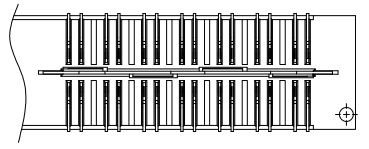
- 1 HOUSING: LCP, BLACK.  
CONTACT & GROUND PLANE: PHOS BRONZE.
- 2 CONTACT PLATING: SELECT 0.76 MICROMETERS (.000030 IN) MIN GOLD.
- 3 FOR STANDARD APPLICATIONS, ORIENTATION HOLE TO BE  $\phi 1.02$  [ $\phi 0.0400$ ].



SECTION A-A



RECOMMENDED PC BOARD LAYOUT  
(VIEWED FROM CONNECTOR SIDE)



DIFFERENTIAL PAIR LOADING  
(BOTTOM VIEW)  
SCALE 2:1

THIS DRAWING IS A CONTROLLED DOCUMENT.		DRN	27MAY03	 Tyco Electronics Corporation Harrisburg, PA 17105-3608	RESTRICTED TO
DIMENSIONS: mm [INCHES]		CHK	27MAY03		
TOLERANCES UNLESS OTHERWISE SPECIFIED:		APP'D	27MAY03	NAME	
0 PLC	±	D. DIXON		RECEPTACLE ASSEMBLY, VERTICAL	
1 PLC	±	D. DIXON		0.80MM CL, MICTOR SB	
2 PLC	±	D. DIXON		APPLICATION SPEC	
3 PLC	±	D. DIXON		WEIGHT	
4 PLC	±	D. DIXON		SIZE	A2
ANGLES	±	D. DIXON		CAGE CODE	00779
FINISH	±	D. DIXON		DRAWING NO	C=1658462
MATERIAL		CUSTOMER DRAWING		SCALE	4:1
				SHEET	1 of 2
				REV	K

AMP 1471-9 REV 31MM2000

1658462

A

4

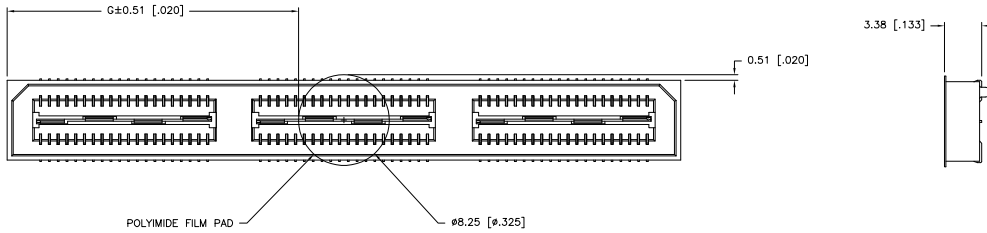
3

2

1

THIS DRAWING IS UNPUBLISHED. RELEASED FOR PUBLICATION  
 BY TYCO ELECTRONICS CORPORATION. ALL RIGHTS RESERVED.

LOC	AD	DIB	REVISIONS					
			F	L/R	DESCRIPTION	DATE	BY	APP
		00			SEE SHEET 1			



26.52(1.044)	40.00(1.575)	2	0.152(0.060)	60.13(2.368)	55.20(2.173)	61.28(2.412)	YES	POCKET TAPE	YES	84	7-1658462-3
18.51(650)	20.00(.7874)	1	0.102(0.040)	40.13(1.580)	35.20(1.386)	41.28(1.625)	YES	POCKET TAPE	YES	56	7-1658462-2
6.52(.257)	0(.000)	0	0.102(0.040)	20.13(.793)	15.20(.598)	21.29(.838)	YES	POCKET TAPE	YES	28	7-1658462-1
26.52(1.044)	40.00(1.575)	2	0.152(0.060)	60.13(2.368)	55.20(2.173)	61.28(2.412)	YES	POCKET TAPE	NO	120	6-1658462-3
18.51(650)	20.00(.7874)	1	0.102(0.040)	40.13(1.580)	35.20(1.386)	41.28(1.625)	YES	POCKET TAPE	NO	80	6-1658462-2
6.52(.257)	0(.000)	0	0.102(0.040)	20.13(.793)	15.20(.598)	21.29(.838)	YES	POCKET TAPE	NO	40	6-1658462-1
-	40.00(1.575)	2	0.152(0.060)	60.13(2.368)	55.20(2.173)	61.28(2.412)	NO	POCKET TAPE	YES	84	5-1658462-3
-	20.00(.7874)	1	0.102(0.040)	40.13(1.580)	35.20(1.386)	41.28(1.625)	NO	POCKET TAPE	YES	56	5-1658462-2
-	0(.000)	0	0.102(0.040)	20.13(.793)	15.20(.598)	21.29(.838)	NO	POCKET TAPE	YES	28	5-1658462-1
-	40.00(1.575)	2	0.152(0.060)	60.13(2.368)	55.20(2.173)	61.28(2.412)	NO	POCKET TAPE	NO	120	4-1658462-3
-	20.00(.7874)	1	0.102(0.040)	40.13(1.580)	35.20(1.386)	41.28(1.625)	NO	POCKET TAPE	NO	80	4-1658462-2
-	0(.000)	0	0.102(0.040)	20.13(.793)	15.20(.598)	21.29(.838)	NO	POCKET TAPE	NO	40	4-1658462-1
46.53(1.832)	80.00(3.150)	4	0.152(0.060)	100.14(3.943)	95.20(3.748)	101.30(3.988)	YES	TRAY	YES	140	3-1658462-5
36.52(1.438)	60.00(2.362)	3	0.152(0.060)	80.14(3.155)	75.20(2.961)	81.28(3.200)	YES	TRAY	YES	112	3-1658462-4
26.52(1.044)	40.00(1.575)	2	0.152(0.060)	60.13(2.368)	55.20(2.173)	61.28(2.412)	YES	TRAY	YES	84	3-1658462-3
18.51(650)	20.00(.7874)	1	0.102(0.040)	40.13(1.580)	35.20(1.386)	41.28(1.625)	YES	TRAY	YES	56	3-1658462-2
6.52(.257)	0(.000)	0	0.102(0.040)	20.13(.793)	15.20(.598)	21.29(.838)	YES	TRAY	YES	28	3-1658462-1
46.53(1.832)	80.00(3.150)	4	0.152(0.060)	100.14(3.943)	95.20(3.748)	101.30(3.988)	YES	TRAY	NO	200	2-1658462-5
36.52(1.438)	60.00(2.362)	3	0.152(0.060)	80.14(3.155)	75.20(2.961)	81.28(3.200)	YES	TRAY	NO	160	2-1658462-4
26.52(1.044)	40.00(1.575)	2	0.152(0.060)	60.13(2.368)	55.20(2.173)	61.28(2.412)	YES	TRAY	NO	120	2-1658462-3
18.51(650)	20.00(.7874)	1	0.102(0.040)	40.13(1.580)	35.20(1.386)	41.28(1.625)	YES	TRAY	NO	80	2-1658462-2
6.52(.257)	0(.000)	0	0.102(0.040)	20.13(.793)	15.20(.598)	21.29(.838)	YES	TRAY	NO	40	2-1658462-1
-	80.00(3.150)	4	0.152(0.060)	100.14(3.943)	95.20(3.748)	101.30(3.988)	NO	TRAY	YES	140	1-1658462-5
-	60.00(2.362)	3	0.152(0.060)	80.14(3.155)	75.20(2.961)	81.28(3.200)	NO	TRAY	YES	112	1-1658462-4
-	40.00(1.575)	2	0.152(0.060)	60.13(2.368)	55.20(2.173)	61.28(2.412)	NO	TRAY	YES	84	1-1658462-3
-	20.00(.7874)	1	0.102(0.040)	40.13(1.580)	35.20(1.386)	41.28(1.625)	NO	TRAY	YES	56	1-1658462-2
-	0(.000)	0	0.102(0.040)	20.13(.793)	15.20(.598)	21.29(.838)	NO	TRAY	YES	28	1-1658462-1
-	80.00(3.150)	4	0.152(0.060)	100.14(3.943)	95.20(3.748)	101.30(3.988)	NO	TRAY	NO	200	1658462-5
-	60.00(2.362)	3	0.152(0.060)	80.14(3.155)	75.20(2.961)	81.28(3.200)	NO	TRAY	NO	160	1658462-4
-	40.00(1.575)	2	0.152(0.060)	60.13(2.368)	55.20(2.173)	61.28(2.412)	NO	TRAY	NO	120	1658462-3
-	20.00(.7874)	1	0.102(0.040)	40.13(1.580)	35.20(1.386)	41.28(1.625)	NO	TRAY	NO	80	1658462-2
-	0(.000)	0	0.102(0.040)	20.13(.793)	15.20(.598)	21.29(.838)	NO	TRAY	NO	40	1658462-1
G	F	E	D	C	B	A		POLYIMIDE FILM Pad	PACKAGING TYPE	NO OF PART	

THIS DRAWING IS A CONTROLLED DOCUMENT.

DIMENSIONS: mm [INCHES]  
 TOLERANCES UNLESS OTHERWISE SPECIFIED:  
 0 P.L.C. ± .010  
 1 P.L.C. ± .015  
 2 P.L.C. ± .020  
 3 P.L.C. ± .025  
 P.L.C. ± .030  
 ANGLES ± .5°  
 FINISH SEE SHEET 1

DIB: B. CARBO 27MAY03  
 CHK: D. DIXON 27MAY03  
 APP: D. DIXON 27MAY03  
 PRODUCT SPEC: D. DIXON  
 APPLICATION SPEC:

WEIGHT: —  
 CUSTOMER DRAWING

Tyco Electronics Corporation  
 Horshburg, PA 17105-3608

RECEPTACLE ASSEMBLY, VERTICAL  
 0.80MM CL,  
 MICTOR SB

SIZE: A2  
 CASE CODE: 00779  
 DRAWING NO: 1658462  
 RESTRICTED TO: —

SCALE: 4:1  
 SHEET: 2 of 2  
 REV: K