

4

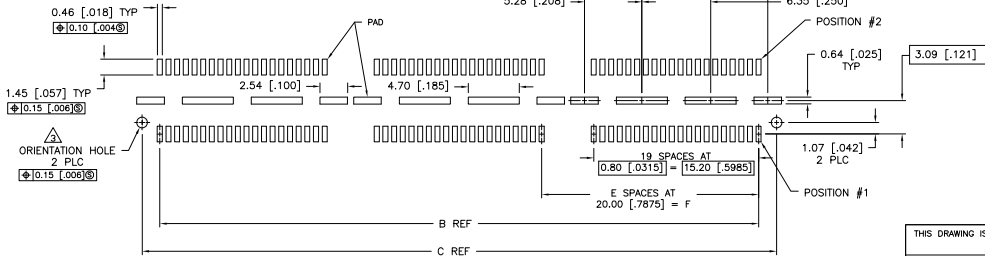
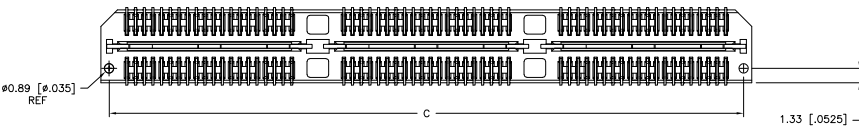
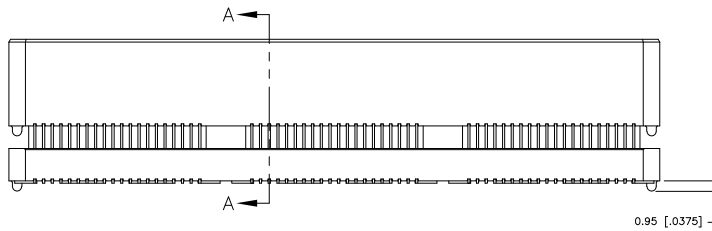
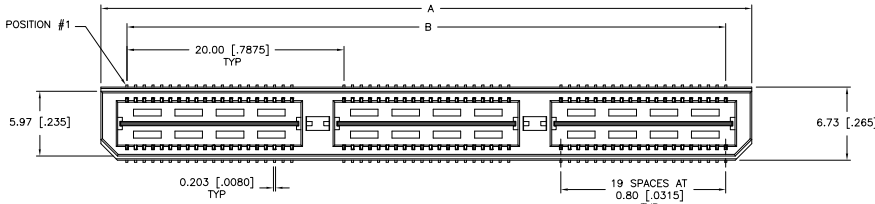
3

2

1

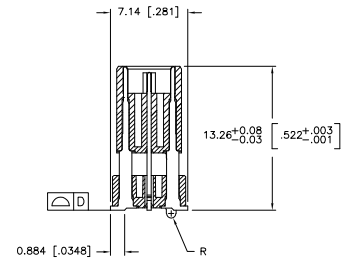
THIS DRAWING IS UNPUBLISHED. RELEASED FOR PUBLICATION.
 © COPYRIGHT BY TYCO ELECTRONICS CORPORATION. ALL RIGHTS RESERVED.

LOC		DIBT		REVISIONS			
AD	00	F	LTR	DESCRIPTION	DATE	BY	APPD
		G		REVISED PER EC 0512-0273-05	19SEP05	JDP	DD

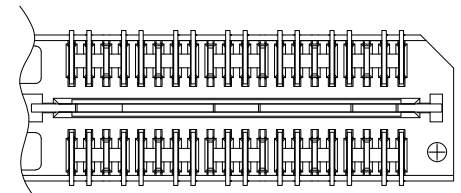


RECOMMENDED PC BOARD LAYOUT
 (VIEWED FROM CONNECTOR SIDE)

- ⚠ HOUSING: LCP, BLACK.
CONTACT & GROUND PLANE: PHOS BRONZE.
- ⚠ CONTACT PLATING: SELECT 0.76 MICROMETERS (.000030 IN) MIN GOLD.
- ⚠ FOR STANDARD APPLICATIONS, ORIENTATION HOLE TO BE Ø1.02 [Ø.0400].



SECTION A-A



DIFFERENTIAL PAIR LOADING
 (BOTTOM VIEW)
 SCALE 2:1

THIS DRAWING IS A CONTROLLED DOCUMENT.		DRN V_FURLER 30SEP03	Tyco Electronics Corporation Harrisburg, PA 17105-3608
DIMENSIONS: mm [INCHES]		CHK D_DIXON 30SEP03	
TOLERANCES UNLESS OTHERWISE SPECIFIED:		APPD D_DIXON 30SEP03	NAME HEADER ASSEMBLY, 14.0MM [.551] VERTICAL, 0.80MM CL, MICROR SB
0 PLC ± .1		PRODUCT SPEC	
1 PLC ± 0.3(0.1)		APPLICATION SPEC	SIZE CAGE CODE DRAWING NO. RESTRICTED TO
2 PLC ± 0.15(0.005)		WEIGHT	A2 00779 C-1658439
3 PLC ± 0.08(0.0025)		FINISH	SCALE 3:1 SHEET 1 of 2 REV G
4 PLC ± .1			
ANGLES ± .1			
MATERIAL			
CUSTOMER DRAWING			

AMP 1471-9 REV 31MAR2000

1658439

A

4

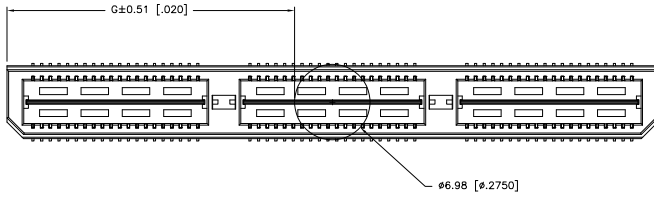
3

2

1

THIS DRAWING IS UNPUBLISHED. RELEASED FOR PUBLICATION
 © COPYRIGHT BY TYCO ELECTRONICS CORPORATION. ALL RIGHTS RESERVED.

LOC	DIST	REVISIONS					
AD	00	F	L/R	DESCRIPTION	DATE	DWN	APPD
				SEE SHEET 1			



26.52(1.044)	40.00(1.575)	2	0.102(0.040)	58.50(2.303)	55.20(2.173)	60.00(2.362)	YES	POCKET TAPE	YES	84	7-1658439-3
16.51(650)	20.00(7874)	1	0.102(0.040)	38.48(1.515)	35.20(1.386)	40.00(1.575)	YES	POCKET TAPE	YES	56	7-1658439-2
6.50(256)	0(000)	0	0.102(0.040)	18.49(728)	15.20(598)	20.00(787)	YES	POCKET TAPE	YES	28	7-1658439-1
26.52(1.044)	40.00(1.575)	2	0.102(0.040)	58.50(2.303)	55.20(2.173)	60.00(2.362)	YES	POCKET TAPE	NO	120	6-1658439-3
16.51(650)	20.00(7874)	1	0.102(0.040)	38.48(1.515)	35.20(1.386)	40.00(1.575)	YES	POCKET TAPE	NO	80	6-1658439-2
6.50(256)	0(000)	0	0.102(0.040)	18.49(728)	15.20(598)	20.00(787)	YES	POCKET TAPE	NO	40	6-1658439-1
-	40.00(1.575)	2	0.102(0.040)	58.50(2.303)	55.20(2.173)	60.00(2.362)	NO	POCKET TAPE	YES	84	5-1658439-3
-	20.00(7874)	1	0.102(0.040)	38.48(1.515)	35.20(1.386)	40.00(1.575)	NO	POCKET TAPE	YES	56	5-1658439-2
-	0(000)	0	0.102(0.040)	18.49(728)	15.20(598)	20.00(787)	NO	POCKET TAPE	YES	28	5-1658439-1
-	40.00(1.575)	2	0.102(0.040)	58.50(2.303)	55.20(2.173)	60.00(2.362)	NO	POCKET TAPE	NO	120	4-1658439-3
-	20.00(7874)	1	0.102(0.040)	38.48(1.515)	35.20(1.386)	40.00(1.575)	NO	POCKET TAPE	NO	80	4-1658439-2
-	0(000)	0	0.102(0.040)	18.49(728)	15.20(598)	20.00(787)	NO	POCKET TAPE	NO	40	4-1658439-1
46.51(1.831)	80.00(3.150)	4	0.152(0.060)	98.50(3.748)	95.20(3.748)	100.00(3.937)	YES	TRAY	YES	140	3-1658439-5
36.53(1.438)	60.00(2.362)	3	0.152(0.060)	78.49(3.090)	75.20(2.961)	80.00(3.150)	YES	TRAY	YES	112	3-1658439-4
26.52(1.044)	40.00(1.575)	2	0.102(0.040)	58.50(2.303)	55.20(2.173)	60.00(2.362)	YES	TRAY	YES	84	3-1658439-3
16.51(650)	20.00(7874)	1	0.102(0.040)	38.48(1.515)	35.20(1.386)	40.00(1.575)	YES	TRAY	YES	56	3-1658439-2
6.50(256)	0(000)	0	0.102(0.040)	18.49(728)	15.20(598)	20.00(787)	YES	TRAY	YES	28	3-1658439-1
46.51(1.831)	80.00(3.150)	4	0.152(0.060)	98.50(3.748)	95.20(3.748)	100.00(3.937)	YES	TRAY	NO	200	2-1658439-5
36.53(1.438)	60.00(2.362)	3	0.152(0.060)	78.49(3.090)	75.20(2.961)	80.00(3.150)	YES	TRAY	NO	160	2-1658439-4
26.52(1.044)	40.00(1.575)	2	0.102(0.040)	58.50(2.303)	55.20(2.173)	60.00(2.362)	YES	TRAY	NO	120	2-1658439-3
16.51(650)	20.00(7874)	1	0.102(0.040)	38.48(1.515)	35.20(1.386)	40.00(1.575)	YES	TRAY	NO	80	2-1658439-2
6.50(256)	0(000)	0	0.102(0.040)	18.49(728)	15.20(598)	20.00(787)	YES	TRAY	NO	40	2-1658439-1
-	80.00(3.150)	4	0.152(0.060)	98.50(3.748)	95.20(3.748)	100.00(3.937)	NO	TRAY	YES	140	1-1658439-5
-	60.00(2.362)	3	0.152(0.060)	78.49(3.090)	75.20(2.961)	80.00(3.150)	NO	TRAY	YES	112	1-1658439-4
-	40.00(1.575)	2	0.102(0.040)	58.50(2.303)	55.20(2.173)	60.00(2.362)	NO	TRAY	YES	84	1-1658439-3
-	20.00(7874)	1	0.102(0.040)	38.48(1.515)	35.20(1.386)	40.00(1.575)	NO	TRAY	YES	56	1-1658439-2
-	0(000)	0	0.102(0.040)	18.49(728)	15.20(598)	20.00(787)	NO	TRAY	YES	28	1-1658439-1
-	80.00(3.150)	4	0.152(0.060)	98.50(3.748)	95.20(3.748)	100.00(3.937)	NO	TRAY	NO	200	1658439-5
-	60.00(2.362)	3	0.152(0.060)	78.49(3.090)	75.20(2.961)	80.00(3.150)	NO	TRAY	NO	160	1658439-4
-	40.00(1.575)	2	0.102(0.040)	58.50(2.303)	55.20(2.173)	60.00(2.362)	NO	TRAY	NO	120	1658439-3
-	20.00(7874)	1	0.102(0.040)	38.48(1.515)	35.20(1.386)	40.00(1.575)	NO	TRAY	NO	80	1658439-2
-	0(000)	0	0.102(0.040)	18.49(728)	15.20(598)	20.00(787)	NO	TRAY	NO	40	1658439-1
G	F	E	D	C	B	A		POLYIMIDE	PACKAGING	DIFF	NO OF PART NUMBER
								FILM PAD	PAIR	POS	

THIS DRAWING IS A CONTROLLED DOCUMENT. DWN V. FURLER 30SEP03

CHK D. DIXON 30SEP03

APPD D. DIXON 30SEP03

NAME Tyco Electronics Corporation

ADDRESS Harrisburg, PA 17105-3608

DIMENSIONS: mm [INCHES]

TO DIMENSIONS UNLESS OTHERWISE SPECIFIED

0 PLG ± 0.3(0.1)

1 PLG ± 0.13(0.005)

2 PLG ± 0.08(0.0025)

3 PLG ± 0.08(0.0025)

4 PLG ± 0.08(0.0025)

ANGLE ± 0.5

FINISH

APPLICATION SPEC: —

WEIGHT: —

SIZE: A2

CAGE CODE: 00779

DRAWING NO: 1658439

RESTRICTED TO: —

CUSTOMER DRAWING

SCALE: 3:1

SHEET: 2 of 2

REV: G

1658439

A