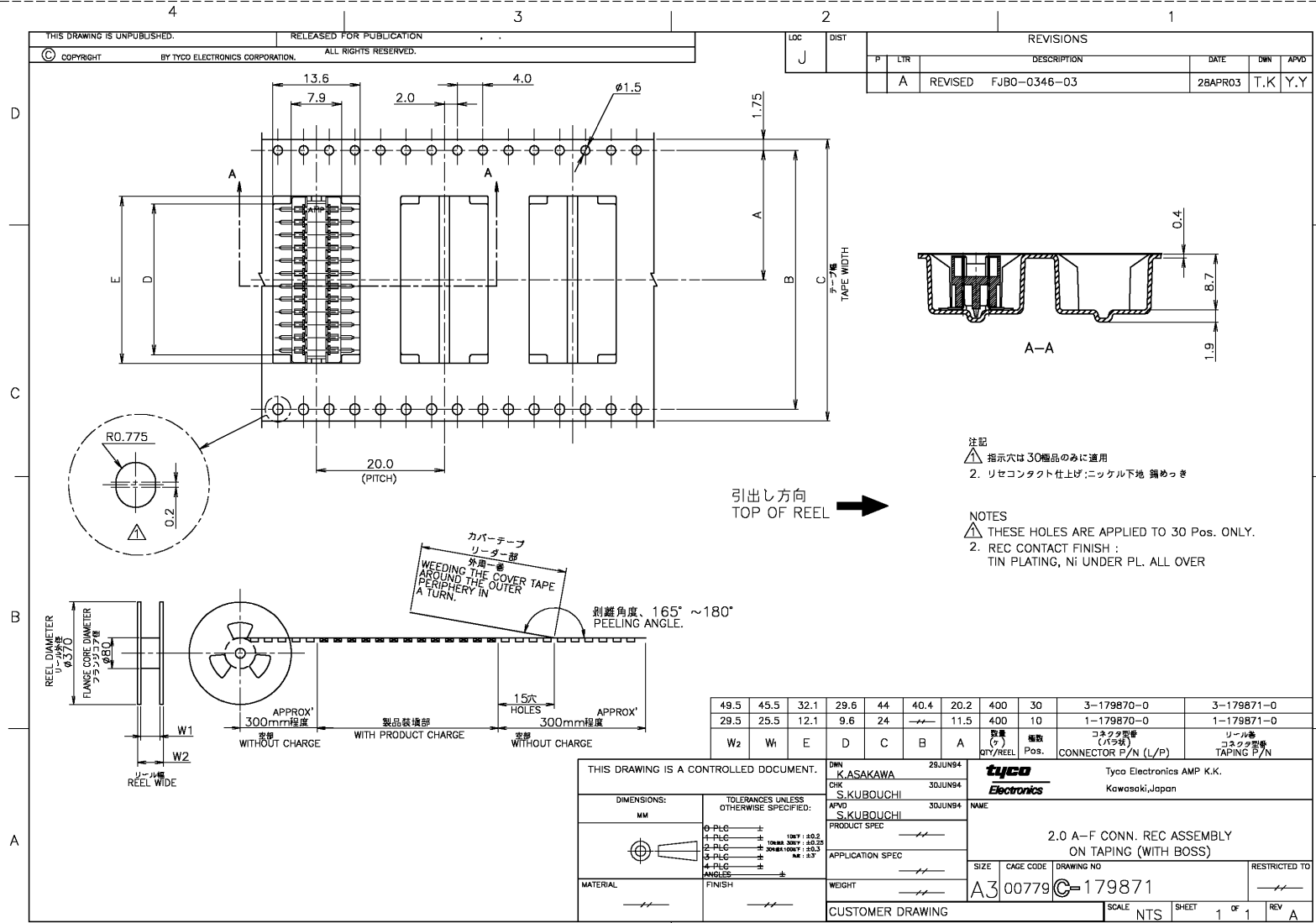


THIS DRAWING IS UNPUBLISHED. RELEASED FOR PUBLICATION  
 BY TYCO ELECTRONICS CORPORATION. ALL RIGHTS RESERVED.

LOC	DIST	REVISIONS			
P	LT/R	DESCRIPTION	DATE	DRN	APVD
A		REVISED FJBO-0346-03	2BAPR03	T.K	Y.Y



注記  
 △ 指示穴は30極品のものに適用  
 2. リセコンタクト仕上げ;ニッケル下地 銅めっき

NOTES  
 △ THESE HOLES ARE APPLIED TO 30 Pos. ONLY.  
 2. REC CONTACT FINISH :  
 TIN PLATING, Ni UNDER PL. ALL OVER

49.5	45.5	32.1	29.6	44	40.4	20.2	400	30	3-179870-0	3-179871-0
29.5	25.5	12.1	9.6	24	---	11.5	400	10	1-179870-0	1-179871-0
W <sub>2</sub>	W <sub>1</sub>	E	D	C	B	A	数量 (P)	極数 Pos.	コネクタ型番 (L/P)	リール番 コネクタ型番 TAPING P/N

THIS DRAWING IS A CONTROLLED DOCUMENT.

DWN: K.ASAKAWA 28JUN94  
 DRK: S.KUBOUCHI 30JUN94  
 APVD: S.KUBOUCHI 30JUN94

TYCO Electronics Tyco Electronics AMP K.K. Kawasaki, Japan

2.0 A-F CONN. REC ASSEMBLY ON TAPING (WITH BOSS)

SIZE: A3 CAGE CODE: 00779 DRAWING NO: 179871 RESTRICTED TO: ---

CUSTOMER DRAWING SCALE: NTS SHEET: 1 OF 1 REV: A