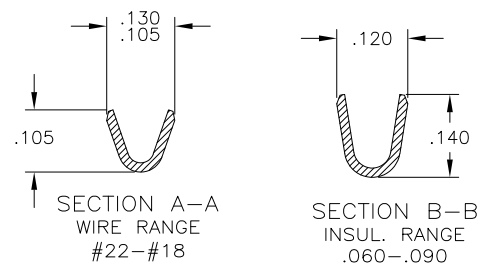
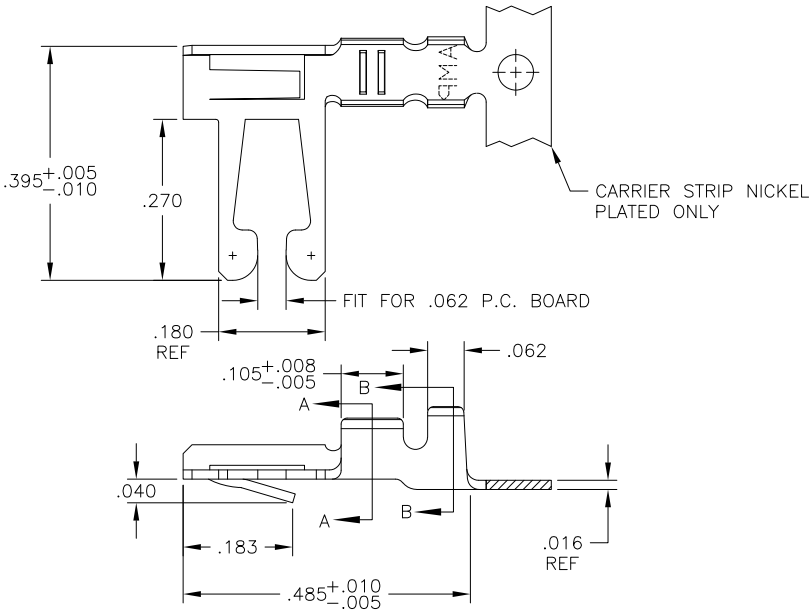


THIS DRAWING IS UNPUBLISHED. RELEASED FOR PUBLICATION  
 © COPYRIGHT - BY TYCO ELECTRONICS CORPORATION. ALL RIGHTS RESERVED.

LOC	DIST	REVISIONS			
P	LTR	DESCRIPTION	DATE	DWN	APVD
L		ECO-05-10249	20MAR06	MB	MM
L1		REV PER ECO-09-021510	09SEPO9	KK	AEG



1. REFER TO CUSTOMER 582370 SERIES AND CUSTOMER 582380 SERIES FOR HOUSING AND P.C. BOARD REQUIREMENTS
- 2 .000015 GOLD OVER .000050 NICKEL IN CONTACT AREA. REMAINDER OF CONTACT .000050 NICKEL.
- 3 .000030 GOLD OVER .000050 NICKEL IN CONTACT AREA. .000050 NICKEL ON REMAINDER OF CONTACT.
- 4 L-R FEED FOR MINI-APPL.
- 5 OBSOLETE PARTS: OBSOLETE CIS STREAMLINING PER D.RENAUD/D.SINISI

	FINISH	PART NUMBER
5	MATTE TIN PLATE	4 530002-8
	OBSOLETE	2 4 530002-7
	OBSOLETE	3 4 530002-6
	TIN PLATE	4 530002-5
	OBSOLETE	2 530002-4
	OBSOLETE	3 530002-3
	TIN PLATE	530002-2

THIS DRAWING IS A CONTROLLED DOCUMENT.		DWN M.BINNER 03APR01	Tyco Electronics Corporation Harrisburg, PA 17105-3608	
DIMENSIONS: INCHES		CHK M.MILLER 05APR01	NAME	
TOLERANCES UNLESS OTHERWISE SPECIFIED:		APVD M.MILLER 05APR01	CONTACT, 22-18 AWG, DUO-TYNE FLAG WITH TAPERED BEAMS	
0 PLC ± -		PRODUCT SPEC	SIZE A3	CAGE CODE 00779
1 PLC ± -		APPLICATION SPEC	DRAWING NO C-530002	RESTRICTED TO
2 PLC ± -		WEIGHT	SCALE 6:1	SHEET 1 OF 1
3 PLC ± .005		CUSTOMER DRAWING	REV L1	
4 PLC ± .0005				
ANGLES ± -				
MATERIAL PHOS. BRONZE	FINISH SEE TABLE			