

REV	DATE	DESCRIPTION	BY	CHK	APP
AD	00	REVISED PER EC 003C-0205-05			
Y		REVISED PER EC0-09-020932			

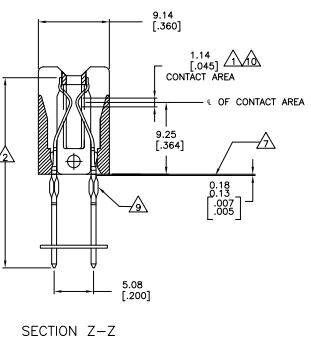
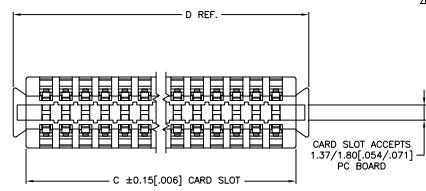
- △ GOLD PLATE .00076 [.000030] MIN. THICK.
- △ NICKEL PL. .00127[.000050] MIN. THK. PER QQ-N-290.
- △ TIN PL. .00254[.000100] MIN. THK.
- △ STAMPED P/N & DATE CODE.
- 5. OPTIONAL: KEYING PLUG FOR INTERCONTACT KEYING IS 118982-1.
- 6. OPTIONAL: CARD GUIDE (BASE NO 117169).
- △ TOP SURFACE OF P.C.BOARD AFTER APPLICATION DUE TO MYLAR THICKNESS.
- △ ALL PARTS ASSEMBLED IN MEXICO MUST BE STAMPED "ASSY. IN MEXICO". THE WORD "MEXICO" CAN BE SUBSTITUTED ONLY WHERE PART SIZE PROHIBITS STAMPING "ASSY IN MEXICO", INK PER 115-9009, APPROX. WHERE SHOWN, SIDE OPTIONAL.
- △ ACTION PIN REQUIRES 2.31[.084] MIN. THK. P.C. BOARD.

REQ'D DRILL SIZE	HOLE DIA. ±.03[.001]	REQUIRED HOLE DIAMETER TOLERANCES FOR COMPLIANT SECTION			COPPER HARDNESS (KNOX)	PAD DIA. MIN.
		PLATING THICKNESS COPPER	TIN/LEAD	HOLE DIAMETER AFTER PLATING		
1.15mm	1.15 [.0453]	0.03-0.08 [.001-.003]	0.008 MIN. [.0003]	0.94-1.09 [.037-.043]	0.914-1.09 [.036-.043]	1.57 [.062]
1.15mm	1.15 [.0453]					1.65 [.065]

NOT PLATED THRU.

- △ GOLD PL. .00076[.000030] MIN. THICK.
- △ MATTE TIN PL. .00254[.000100] MIN. THK.
- △ OBSOLETE PARTS: OBSOLETE CIS STREAMLINING PER D.RENAUD/D.SINISI

△	150.72	[5.934]	147.42	[5.804]	142.24	[5.600]	56	57	9-119216-3
△	140.56	[5.534]	137.26	[5.404]	132.08	[5.200]	52	53	8-119216-9
△	132.94	[5.234]	128.84	[5.104]	124.40	[4.900]	48	50	8-119216-6
△	130.46	[5.134]	127.10	[5.004]	121.92	[4.800]	48	49	8-119216-5
△	117.70	[4.634]	114.40	[4.504]	109.22	[4.300]	43	44	8-119216-0
△	107.54	[4.234]	104.24	[4.104]	99.06	[3.900]	39	40	7-119216-8
△	97.38	[3.834]	94.08	[3.704]	89.90	[3.500]	35	36	7-119216-2
△	84.84	[3.334]	81.54	[3.204]	76.38	[3.000]	34	35	7-119216-1
△	82.30	[3.234]	79.00	[3.104]	73.66	[2.900]	33	34	7-119216-0
△	82.14	[3.234]	78.84	[3.104]	73.66	[2.900]	29	30	6-119216-8
△	81.82	[3.234]	78.52	[3.104]	73.34	[2.900]	21	22	5-119216-8
△	158.34	[6.234]	155.04	[6.104]	149.66	[5.900]	59	60	4-119216-6
△	155.80	[6.134]	152.50	[6.004]	147.32	[5.800]	58	59	4-119216-5
△	153.26	[6.034]	149.96	[5.904]	144.78	[5.700]	57	58	4-119216-4
△	150.72	[5.934]	147.42	[5.804]	142.24	[5.600]	56	57	4-119216-3
△	148.18	[5.834]	144.88	[5.704]	139.70	[5.500]	55	56	4-119216-2
△	145.64	[5.734]	142.34	[5.604]	137.16	[5.400]	54	55	4-119216-1
△	143.10	[5.634]	139.80	[5.504]	134.62	[5.300]	53	54	4-119216-0
△	140.56	[5.534]	137.26	[5.404]	132.08	[5.200]	52	53	3-119216-9
△	138.02	[5.434]	134.72	[5.304]	129.54	[5.100]	51	52	3-119216-8
△	135.48	[5.334]	132.18	[5.204]	127.00	[5.000]	50	51	3-119216-7
△	132.94	[5.234]	129.64	[5.104]	124.46	[4.900]	49	50	3-119216-6
△	130.40	[5.134]	127.10	[5.004]	121.92	[4.800]	48	49	3-119216-5
△	127.86	[5.034]	124.56	[4.904]	119.38	[4.700]	47	48	3-119216-4
△	125.32	[4.934]	122.02	[4.804]	116.84	[4.600]	46	47	3-119216-3
△	122.78	[4.834]	119.48	[4.704]	114.30	[4.500]	45	46	3-119216-2
△	120.24	[4.734]	116.94	[4.604]	111.76	[4.400]	44	45	3-119216-1
△	117.70	[4.634]	114.40	[4.504]	109.22	[4.300]	43	44	3-119216-0
△	115.16	[4.534]	111.86	[4.404]	106.68	[4.200]	42	43	2-119216-9
△	112.62	[4.434]	109.32	[4.304]	104.14	[4.100]	41	42	2-119216-8
△	110.08	[4.334]	106.78	[4.204]	101.60	[4.000]	40	41	2-119216-7
△	107.54	[4.234]	104.24	[4.104]	99.06	[3.900]	39	40	2-119216-6
△	105.00	[4.134]	101.70	[4.004]	96.52	[3.800]	38	39	2-119216-5
△	102.46	[4.034]	99.16	[3.904]	93.98	[3.700]	37	38	2-119216-4
△	99.92	[3.934]	96.62	[3.804]	91.44	[3.600]	36	37	2-119216-3
△	97.38	[3.834]	94.08	[3.704]	88.90	[3.500]	35	36	2-119216-2
△	94.84	[3.734]	91.54	[3.604]	86.36	[3.400]	34	35	2-119216-1
△	92.30	[3.634]	89.00	[3.504]	83.82	[3.300]	33	34	2-119216-0
△	89.76	[3.534]	86.46	[3.404]	81.28	[3.200]	32	33	1-119216-9
△	87.22	[3.434]	83.92	[3.304]	78.74	[3.100]	31	32	1-119216-8
△	84.68	[3.334]	81.38	[3.204]	76.20	[3.000]	30	31	1-119216-7
△	82.14	[3.234]	78.84	[3.104]	73.66	[2.900]	29	30	1-119216-6
△	79.60	[3.134]	76.30	[3.004]	71.12	[2.800]	28	29	1-119216-5
△	77.06	[3.034]	73.76	[2.904]	68.58	[2.700]	27	28	1-119216-4
△	74.52	[2.934]	71.22	[2.804]	66.04	[2.600]	26	27	1-119216-3
△	71.98	[2.834]	68.68	[2.704]	63.50	[2.500]	25	26	1-119216-2
△	69.44	[2.734]	66.14	[2.604]	60.96	[2.400]	24	25	1-119216-1
△	66.90	[2.634]	63.60	[2.504]	58.42	[2.300]	23	24	1-119216-0
△	64.36	[2.534]	61.06	[2.404]	55.88	[2.200]	22	23	1-119216-9
△	61.82	[2.434]	58.52	[2.304]	53.34	[2.100]	21	22	119216-8
△	59.28	[2.334]	55.98	[2.204]	50.80	[2.000]	20	21	119216-7
△	56.74	[2.234]	53.44	[2.104]	48.26	[1.900]	19	20	119216-6
△	54.20	[2.134]	50.90	[2.004]	45.72	[1.800]	18	19	119216-5
△	51.66	[2.034]	48.36	[1.904]	43.18	[1.700]	17	18	119216-4
△	49.12	[1.934]	45.82	[1.804]	40.64	[1.600]	16	17	119216-3
△	46.58	[1.834]	43.28	[1.704]	38.10	[1.500]	15	16	119216-2
△	44.04	[1.734]	40.74	[1.604]	35.56	[1.400]	14	15	119216-1



THIS DRAWING IS A CONTROLLED DOCUMENT. © 2008 BY TTI ELECTRONICS CORPORATION. ALL RIGHTS RESERVED.

REVISIONS: 4.1

DATE: 11/19/16

BY: [Signature]

CHK: [Signature]

APP: [Signature]

DESCRIPTION: CONNECTOR, AMP PACE 1.00x.200

REVISED PER EC0-09-020932

REVISED PER EC 003C-0205-05