

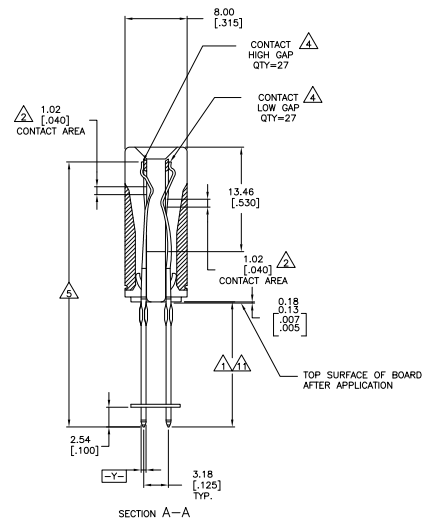
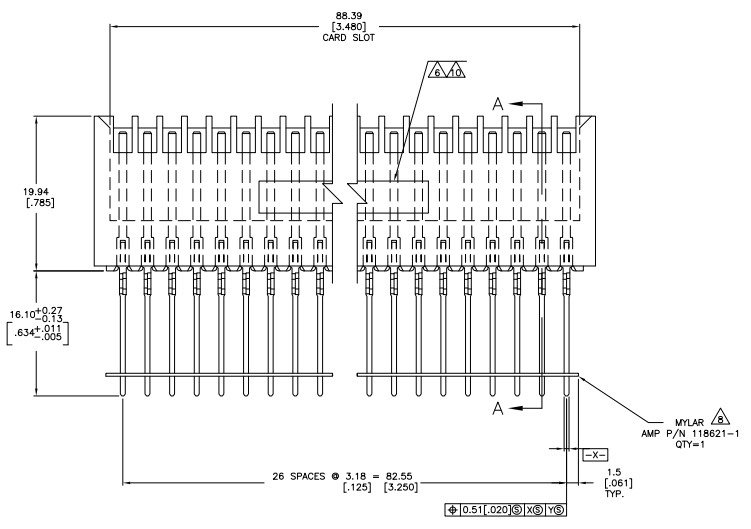
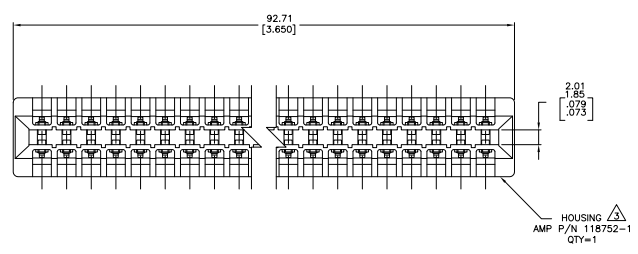
THIS DRAWING IS UNPUBLISHED  
 UNLESS OTHERWISE SPECIFIED  
 ALL RIGHTS RESERVED  
 © 1988 BY TYS ELECTRONICS CORPORATION

REVISED PER EC 0030-0205-06		DATE	BY	APP'D
F		13FEB84	SS	MM

- △ SOLDER PLATE 0.00076 [.000030] MIN. THICK ON POST AND ACTION PIN AREA ONLY.
- △ GOLD PLATE .00076 [.000030] MIN. THICK.
- △ HOUSING MATERIAL: VALOX 420 SE0, 30% GLASS REINFORCED.
- △ CONTACT MATERIAL: PHOSPHOR BRONZE.
- △ NICKEL PLATE 0.00254 [.000100] MIN. THICK.
- △ HOT STAMPED AMP PART NUMBER AND DATE CODE IN 1/16 HIGH NEWS GOTHIC CHARACTERS CENTRALLY LOCATED AS SHOWN, SIDE OPTIONAL.
- 7. ALL DIMENSIONS ARE REFERENCE UNLESS OTHERWISE NOTED.
- △ MATERIAL: MYLAR, CLEAR-TYPE D.
- 9. RECOMMENDED HOLE SIZE AS FOLLOWS:

REQUIRED DRILL	DRILL HOLE DIAMETER ±0.03 [±.001]	PLATING		HOLE DIAMETER		COPPER HARDNESS	PAD DIAMETER MIN.
		COPPER	Pb Sn	AFTER PLATING	AFTER REFLOW		
NO. 56	1.181 [.0465]	0.03/0.08 [.001/.003]	0.008 MIN. [.0003] MIN.	0.97/1.12 [.038/.044]	0.94/1.22 [.037/.048]	150 KNOOP MAX.	1.57 [.062]

- △ ALL PARTS ASSEMBLED IN MEXICO MUST BE HOT STAMPED "ASSY IN MEXICO" THE WORD "MEXICO" CAN BE SUBSTITUTED ONLY WHERE PART SIZE PROHIBITS STAMPING "ASSY IN MEXICO". STAMP APPROX WHERE SHOWN.
- △ MATTE TIN PLATE 0.00076 [.000030] MIN. THICK ON POST AND ACTION PIN AREA ONLY.



5-645394-1
645394-1
PART NUMBER

THIS DRAWING IS A CONTROLLED DOCUMENT.		DATE	11-28-84	BY	MM	APP'D	MM
DESIGNED	BY	DATE	11-28-84	BY	MM	APP'D	MM
DRAWN	BY	DATE	11-28-84	BY	MM	APP'D	MM
CHECKED	BY	DATE	11-28-84	BY	MM	APP'D	MM
APPROVED	BY	DATE	11-28-84	BY	MM	APP'D	MM
SEE CALLOUTS		SIZE	A1	DATE	00779	QTY	645394
SEE CALLOUTS		SCALE	1:1	REV	1	BY	F