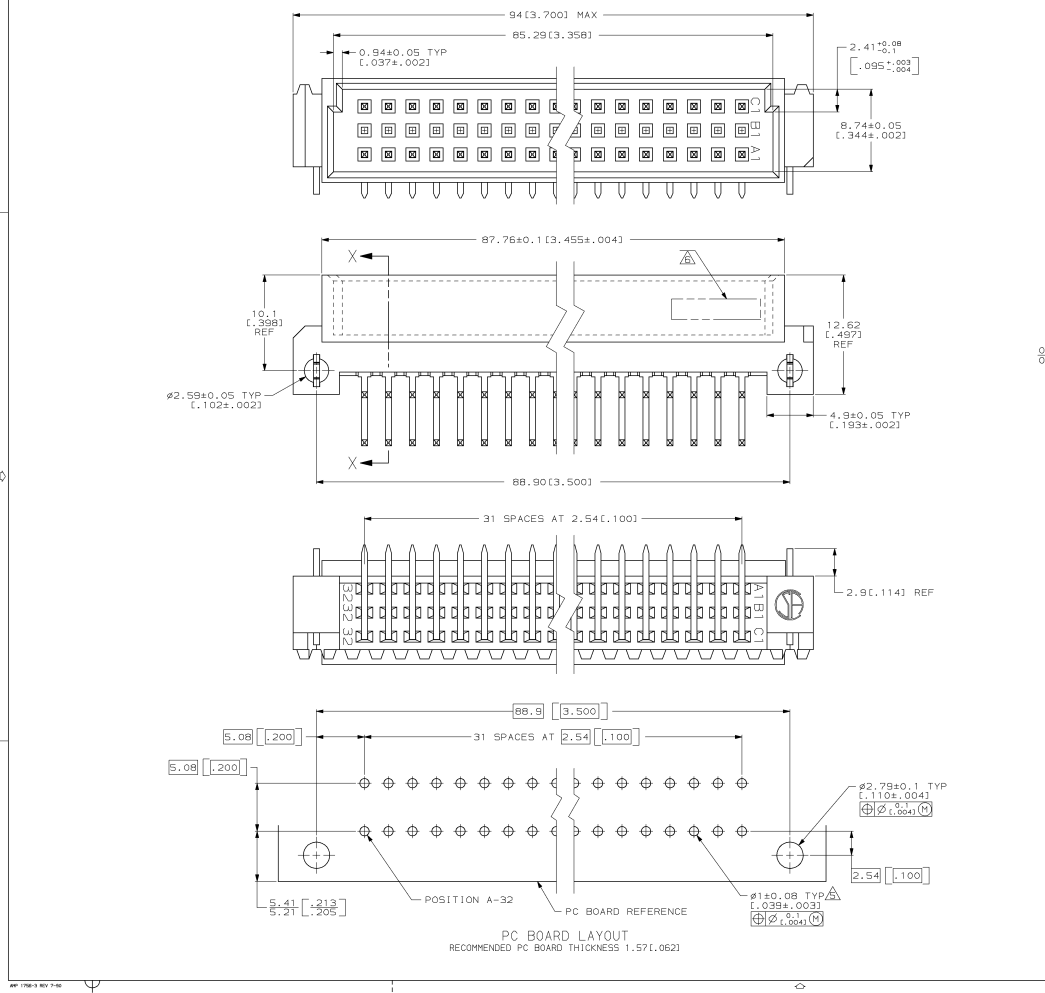
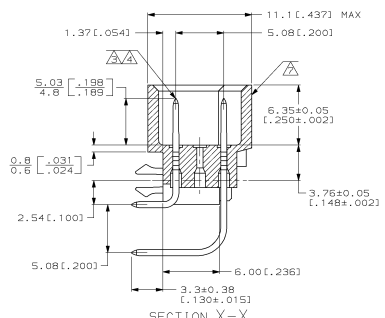


DRAWING MADE IN THIS WHOLE PROTECTION  
THIS DRAWING IS UNPUBLISHED.  
© Copyright 1984  
RELEASED FOR PUBLICATION  
BY AMP INCORPORATED. ALL INTERNATIONAL RIGHTS RESERVED.

REV. NO.		DATE	DESCRIPTION	BY	APP.
AD	25				



- △ HOUSING MATERIAL, GLASS-FILLED POLYESTER. COLOR, GRAY.
- △ POST MATERIAL, BRASS.
- △ POST FINISH, DIN 41612 CLASS 2 IN CONTACT AREA. TIN-LEAD PLATE ON POSTS.
- △ POST FINISH, DIN 41612 CLASS 3 IN CONTACT AREA. TIN-LEAD PLATE ON POSTS.
- △ RECOMMENDED HOLE SIZE FOR MANUAL APPLICATION OF CONNECTOR ONTO PC BOARD.
- △ [PART NUMBER, DATE CODE] MARKED THIS APPROXIMATE AREA.
- △ MARKING ON THIS SIDE.



NOTES	POSITIONS LOADED	C	B	A	NO. OF LOADED POSITIONS	ASSY PART NUMBER
SUPERSEDED BY 536406-5	1-32	X	-	X	64	536406-9
	1-32	X	-	X	64	536406-5

DO NOT SCALE PRINT. UNLESS SPECIFIED DIMENSIONS IN mm (INCHES) TOLERANCES ON +		DR	DATE	AMP Incorporated Harrisburg, PA 17105-3608	
1 P.L.C. DEC ± 0.131 (005) INCHES ±		L. BRINER	11/20/92	PART NO. 536406-9	
2 P.L.C. DEC ± 0.131 (005) INCHES ±		R. PATTERSON	12/11/92		
MATERIAL HSG: △ - POST: △ -		APPRO. D.C. RUBENDALL	12/11/92	PART NO. 536406-5	
FINISH APPLICATION SPEC		NAME		PIN ASSEMBLY, EUROCARD, TYPE "C" WITH BOARD-LOCKS	
WEIGHT		SIZE	CAGE CODE	DRAWING NO.	
		SCALE	00779	536406	
			5:1		

CUSTOMER DRAWING