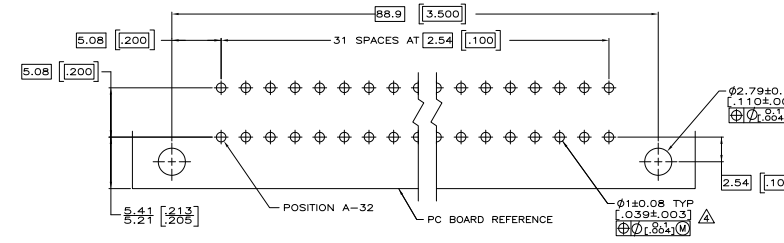
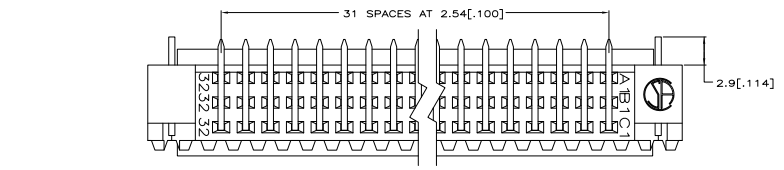
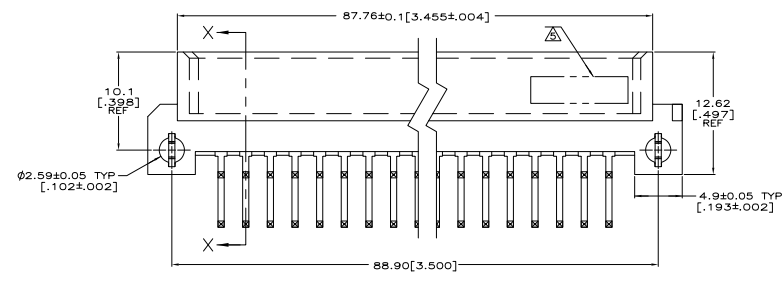
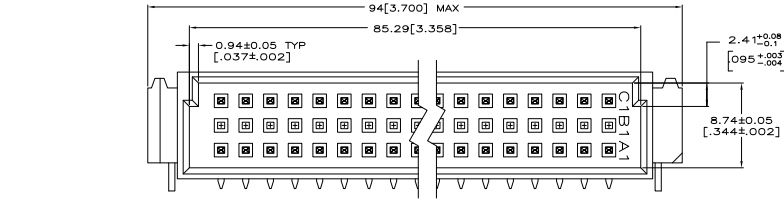


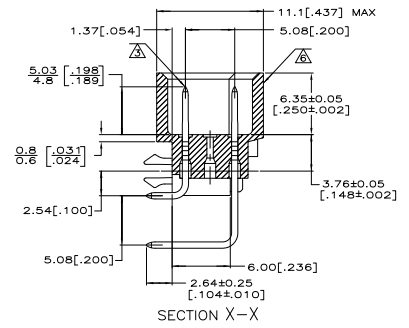
THIS DRAWING IS UNPUBLISHED  
 ALL RIGHTS RESERVED  
 © 2008 TTI ELECTRONICS CORPORATION

REV	DATE	DESCRIPTION	BY	CHK	APP
AD	25				
01		REVISED PER ECO-07-018157	21AUG07	DH	DB



PC BOARD LAYOUT  
 RECOMMENDED PC BOARD THICKNESS 1.57 [062]

- ▲ HOUSING MATERIAL: GLASS-FILLED POLYMER.
- ▲ POST MATERIAL: COPPER ALLOY.
- ▲ POST FINISH: DIN 41612 CLASS 2 IN CONTACT AREA. TIN PLATE ON POSTS.
- ▲ RECOMMENDED HOLE SIZE FOR MANUAL APPLICATION OF CONNECTOR ONTO PC BOARD.
- ▲ [PART NUMBER, DATE CODE] MARKED THIS APPROXIMATE AREA.
- ▲ MARKING ON THIS SIDE.



SECTION X-X

1-32	X	-	X	96	5536356-5
POSITIONS LOADED	C	B	A	NO. OF LOADED ROWS	ASSY PART NUMBER

THIS DRAWING IS A CONTROLLED DOCUMENT.		REV	EDUCATION	ISSUED	DATE	TTI Electronics Corporation Harrisburg, Pa 17105-3608	
UNLESS OTHERWISE SPECIFIED:	UNLESS OTHERWISE SPECIFIED:	UNIT	SHAPE	FINISH	MARK	ASSEMBLY, PIN, EUROCARD, TYPE C, A and C, 64/96 POSITION, 104 SOLDER POST WITH BOARD-LOCKS	
INCHES	MILLIMETERS	INCHES	SHAPE	FINISH	MARK	SIZE	DATE
1/16	1.5748	1/32	RECT	PLATE	1	A1	00779
1/8	3.175	1/16	RECT	PLATE	1	Q=5536356	
3/16	4.7625	3/32	RECT	PLATE	1		
1/4	6.35	1/8	RECT	PLATE	1		
5/16	7.9375	3/16	RECT	PLATE	1		
3/8	9.525	1/4	RECT	PLATE	1		
1/2	12.7	5/16	RECT	PLATE	1		
5/8	15.875	3/8	RECT	PLATE	1		
3/4	19.05	1/2	RECT	PLATE	1		
7/8	22.225	5/8	RECT	PLATE	1		
1	25.4	3/4	RECT	PLATE	1		
1 1/8	31.75	7/8	RECT	PLATE	1		
1 1/4	38.1	1	RECT	PLATE	1		
1 3/8	44.45	1 1/8	RECT	PLATE	1		
1 1/2	50.8	1 1/4	RECT	PLATE	1		
1 5/8	57.15	1 3/8	RECT	PLATE	1		
1 3/4	63.5	1 1/2	RECT	PLATE	1		
1 7/8	69.85	1 3/4	RECT	PLATE	1		
2	76.2	1 7/8	RECT	PLATE	1		
2 1/8	82.55	2	RECT	PLATE	1		
2 1/4	88.9	2 1/8	RECT	PLATE	1		
2 3/8	95.25	2 1/4	RECT	PLATE	1		
2 1/2	101.6	2 3/8	RECT	PLATE	1		
2 5/8	107.95	2 1/2	RECT	PLATE	1		
2 3/4	114.3	2 5/8	RECT	PLATE	1		
2 7/8	120.65	2 3/4	RECT	PLATE	1		
3	127	2 7/8	RECT	PLATE	1		
3 1/8	133.35	3	RECT	PLATE	1		
3 1/4	139.7	3 1/8	RECT	PLATE	1		
3 3/8	146.05	3 1/4	RECT	PLATE	1		
3 1/2	152.4	3 3/8	RECT	PLATE	1		
3 5/8	158.75	3 1/2	RECT	PLATE	1		
3 3/4	165.1	3 5/8	RECT	PLATE	1		
3 7/8	171.45	3 3/4	RECT	PLATE	1		
4	177.8	3 7/8	RECT	PLATE	1		
4 1/8	184.15	4	RECT	PLATE	1		
4 1/4	190.5	4 1/8	RECT	PLATE	1		
4 3/8	196.85	4 1/4	RECT	PLATE	1		
4 1/2	203.2	4 3/8	RECT	PLATE	1		
4 5/8	209.55	4 1/2	RECT	PLATE	1		
4 3/4	215.9	4 5/8	RECT	PLATE	1		
4 7/8	222.25	4 3/4	RECT	PLATE	1		
5	228.6	4 7/8	RECT	PLATE	1		
5 1/8	234.95	5	RECT	PLATE	1		
5 1/4	241.3	5 1/8	RECT	PLATE	1		
5 3/8	247.65	5 1/4	RECT	PLATE	1		
5 1/2	254	5 3/8	RECT	PLATE	1		
5 5/8	260.35	5 1/2	RECT	PLATE	1		
5 3/4	266.7	5 5/8	RECT	PLATE	1		
5 7/8	273.05	5 3/4	RECT	PLATE	1		
6	279.4	5 7/8	RECT	PLATE	1		
6 1/8	285.75	6	RECT	PLATE	1		
6 1/4	292.1	6 1/8	RECT	PLATE	1		
6 3/8	298.45	6 1/4	RECT	PLATE	1		
6 1/2	304.8	6 3/8	RECT	PLATE	1		
6 5/8	311.15	6 1/2	RECT	PLATE	1		
6 3/4	317.5	6 5/8	RECT	PLATE	1		
6 7/8	323.85	6 3/4	RECT	PLATE	1		
7	330.2	6 7/8	RECT	PLATE	1		
7 1/8	336.55	7	RECT	PLATE	1		
7 1/4	342.9	7 1/8	RECT	PLATE	1		
7 3/8	349.25	7 1/4	RECT	PLATE	1		
7 1/2	355.6	7 3/8	RECT	PLATE	1		
7 5/8	361.95	7 1/2	RECT	PLATE	1		
7 3/4	368.3	7 5/8	RECT	PLATE	1		
7 7/8	374.65	7 3/4	RECT	PLATE	1		
8	381	7 7/8	RECT	PLATE	1		
8 1/8	387.35	8	RECT	PLATE	1		
8 1/4	393.7	8 1/8	RECT	PLATE	1		
8 3/8	400.05	8 1/4	RECT	PLATE	1		
8 1/2	406.4	8 3/8	RECT	PLATE	1		
8 5/8	412.75	8 1/2	RECT	PLATE	1		
8 3/4	419.1	8 5/8	RECT	PLATE	1		
8 7/8	425.45	8 3/4	RECT	PLATE	1		
9	431.8	8 7/8	RECT	PLATE	1		
9 1/8	438.15	9	RECT	PLATE	1		
9 1/4	444.5	9 1/8	RECT	PLATE	1		
9 3/8	450.85	9 1/4	RECT	PLATE	1		
9 1/2	457.2	9 3/8	RECT	PLATE	1		
9 5/8	463.55	9 1/2	RECT	PLATE	1		
9 3/4	469.9	9 5/8	RECT	PLATE	1		
9 7/8	476.25	9 3/4	RECT	PLATE	1		
10	482.6	9 7/8	RECT	PLATE	1		