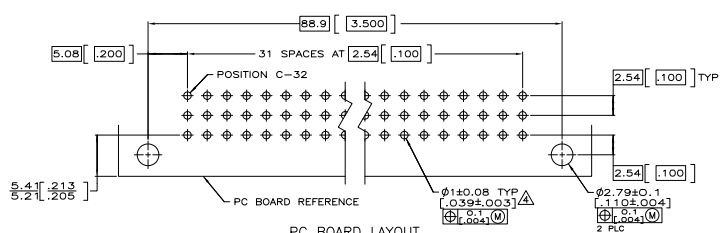
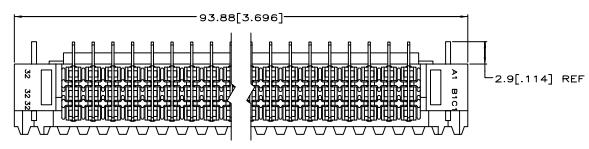
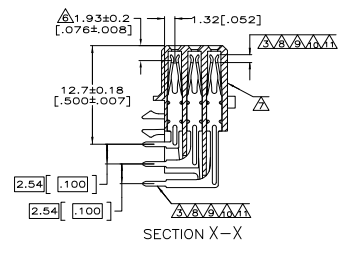
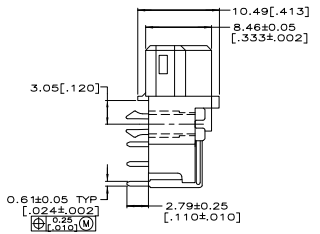
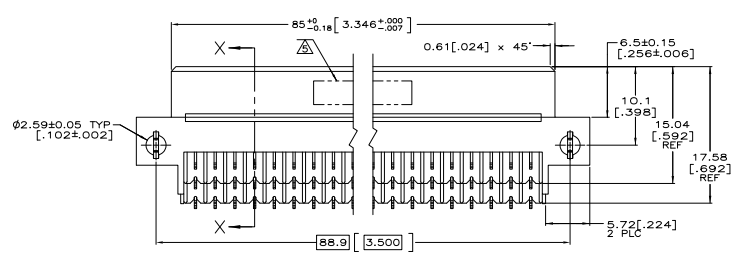
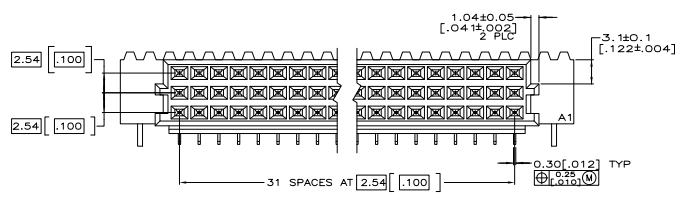


REV	DATE	DESCRIPTION	BY	APP'D
AD 25		REVISED PER 650895-5		JDF/AMS



- ▲ HOUSING MATERIAL: GLASS-FILLED POLYESTER. COLOR: GRAY.
- ▲ CONTACT MATERIAL: PHOSPHOR BRONZE.
- ▲ CONTACT FINISH: 0.00076[.000030] GOLD IN CONTACT AREA. 0.00127[.000050] NICKEL UNDERPLATE ALL OVER. TIN-LEAD ON POSTS.
- ▲ RECOMMENDED HOLE SIZE FOR MANUAL APPLICATION OF CONNECTOR ONTO PC BOARD.
- ▲ PART NUMBER, DATE CODE IDENTIFICATION, CSA LOGO HOT-STAMPED THIS APPROXIMATE AREA.
- ▲ CONTACT POINT.
- ▲ HOT-STAMPING ON THIS SIDE.
- ▲ CONTACT FINISH: DIN 41612 CLASS 3 IN CONTACT AREA. TIN-LEAD ON POSTS.
- ▲ CONTACT FINISH: DIN 41612 CLASS 2 IN CONTACT AREA. TIN-LEAD ON POSTS.
- ▲ CONTACT FINISH: 0.00076[.000030] GOLD IN CONTACT AREA. 0.00127[.000050] NICKEL UNDERPLATE ALL OVER. TIN ON POSTS.
- ▲ CONTACT FINISH: DIN 41612 CLASS 2 IN CONTACT AREA. TIN ON POSTS.

REV	DATE	DESCRIPTION	BY	APP'D
1	THRU 32	X X X X	96	7-650895-5
2	1 THRU 32	X X X X	96	7-650895-4
3	1 THRU 32	X X X X	96	650895-9
4	1 THRU 32	X X X X	96	650895-5
5	1 THRU 32	X X X X	96	650895-4

POSITIONS LOADED		C	B	A	NO. OF ROWS LOADED	ASSY PART NUMBER
1	THRU 32	X	X	X	96	7-650895-5
2	1 THRU 32	X	X	X	96	7-650895-4
3	1 THRU 32	X	X	X	96	650895-9
4	1 THRU 32	X	X	X	96	650895-5
5	1 THRU 32	X	X	X	96	650895-4

THIS DRAWING IS A CONTROLLED DOCUMENT.

DATE: 10/19/91
 DRAWN BY: JDF
 CHECKED BY: JDF
 DESIGNED BY: JDF
 APPROVED BY: JDF

REVISIONS: 10/19/91
 REVISED PER 650895-5

RECEIPTABLE ASSEMBLY, EUROCARD, TYPE R WITH BOARD LOCKS, 96 POSITION

DATE: 10/19/91
 DRAWING NO: A100779G-650895
 REVISED TO: 1

CUSTOMER DRAWING