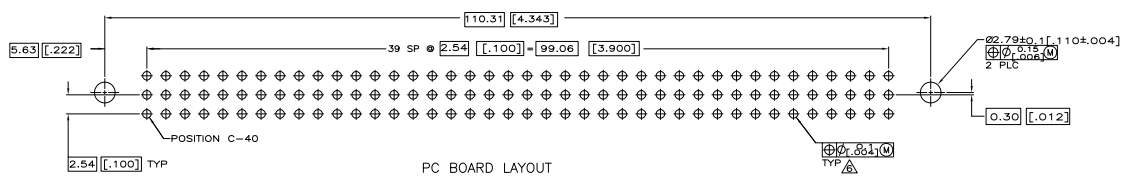
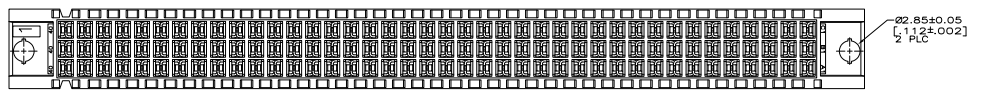
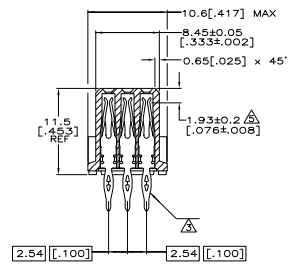
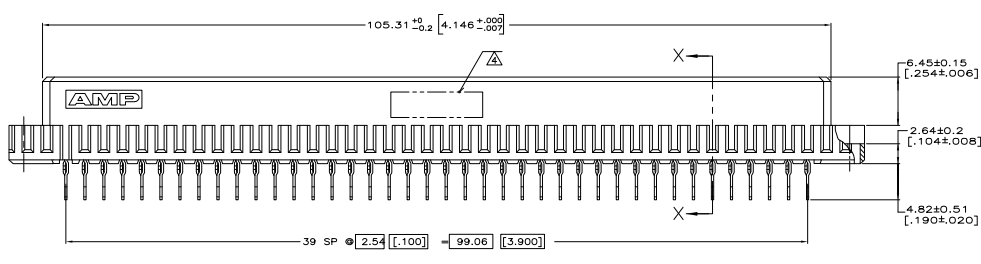
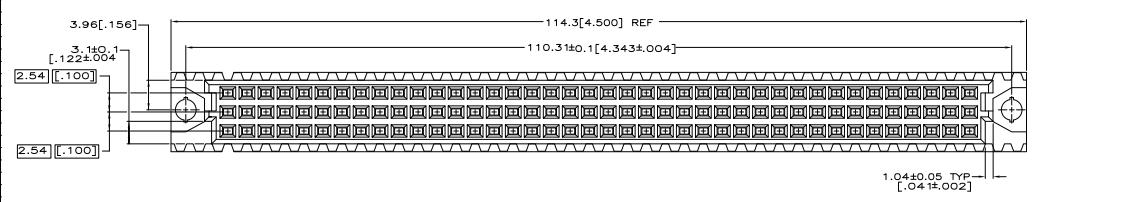


THIS DRAWING IS UNPUBLISHED. RELEASED FOR INFORMATION.
 © 1988 BY TYS ELECTRONICS CORPORATION. ALL RIGHTS RESERVED.

REV	DATE	DESCRIPTION	BY	CHK
AD	25			
0		RELEASE FOR EC 0012-0082-05	DDMANS	JDF/AMS

- △ HOUSING MATERIAL: GLASS-FILLED POLYMER.
- △ CONTACT MATERIAL: COPPER ALLOY.
- △ CONTACT FINISH: DIN 41612 CLASS 2 IN CONTACT AREA. TIN PLATE ON TAILS.
- △ PART NUMBER, DATE CODE IDENTIFICATION, CSA LOGO IN THIS APPROXIMATE AREA, ON REVERSE SIDE.
- △ CONTACT POINT.
- △ ACTION PIN POSTS REQUIRE 1.57(.062) MIN THICK PC BOARD. RECOMMENDED PC BOARD HOLES ARE Ø 1.51(.059) (Ø 1.53(.061) DRILLED HOLE WITH 0.02-0.07(.001-.003) COPPER AND 0.008(.0003) MIN TIN-LEAD PLATING. FINISHED HOLE AFTER PLATING: Ø 1.94-1.09(.037-.043).



5535079-5
 ASSY PART NUMBER

THIS DRAWING IS A CONTROLLED DOCUMENT.		REV	DATE	DESCRIPTION	BY	CHK
REV	DATE	DESCRIPTION	BY	CHK		
AD	25					
0		RELEASE FOR EC 0012-0082-05	DDMANS	JDF/AMS		

INCHES	UNLESS OTHERWISE SPECIFIED	REV	EDUCATION	ISSUES	5535079-5	Tys Electronics Corporation Harrisburg, PA 17105-3608
MILLIMETERS	AS SHOWN	REV	SHADE	ISSUES		
ASSEMBLY	ASSEMBLY, RECEPTACLE, EUROCARD, TYPE C, 120 POSITION, 4.83(190) TOLERLESS PRESS-FIT.	REV	SHADE	ISSUES		
SIZE	SIZE	DATE	DATE	ISSUES	100779	5535079
CUSTOMER DRAWING		DATE	DATE	ISSUES	4.1	1