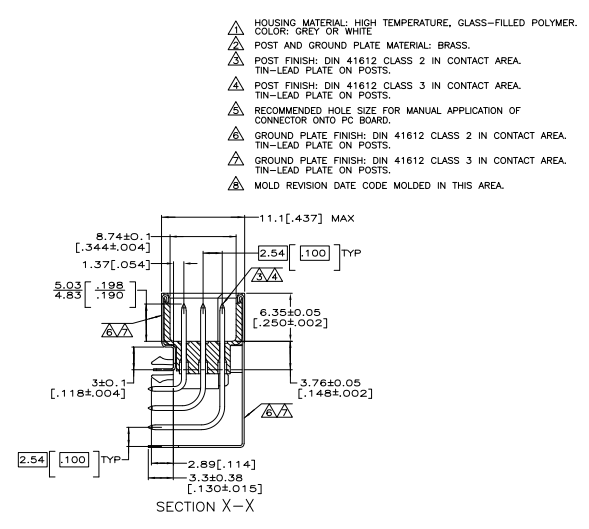
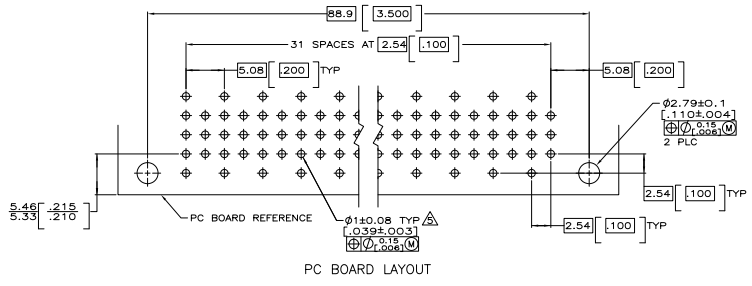
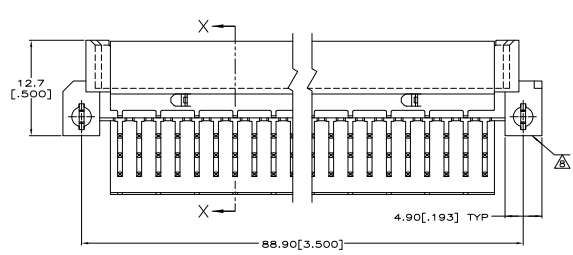
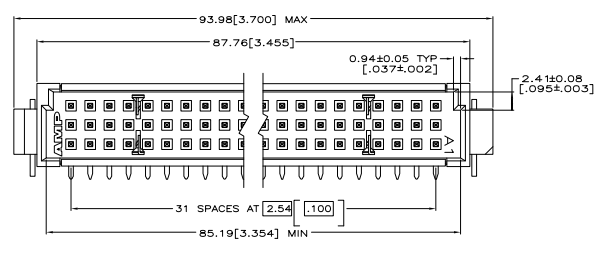


REVISONS				
NO.	DATE	BY	DESCRIPTION	APPD.
AD	25	F	REVISED PER ECO-07-007578	ZHM/DJF DB



- ▲ HOUSING MATERIAL: HIGH TEMPERATURE, GLASS-FILLED POLYMER. COLOR: GREY OR WHITE
- ▲ POST AND GROUND PLATE MATERIAL: BRASS.
- ▲ POST FINISH: DIN 41612 CLASS 2 IN CONTACT AREA. TIN-LEAD PLATE ON POSTS.
- ▲ POST FINISH: DIN 41612 CLASS 3 IN CONTACT AREA. TIN-LEAD PLATE ON POSTS.
- ▲ RECOMMENDED HOLE SIZE FOR MANUAL APPLICATION OF CONNECTOR ONTO PC BOARD.
- ▲ GROUND PLATE FINISH: DIN 41612 CLASS 2 IN CONTACT AREA. TIN-LEAD PLATE ON POSTS.
- ▲ GROUND PLATE FINISH: DIN 41612 CLASS 3 IN CONTACT AREA. TIN-LEAD PLATE ON POSTS.
- ▲ MOLD REVISION DATE CODE MOLDED IN THIS AREA.

OBSOLETE	▲▲	9-536149-5
OBSOLETE	▲▲	536149-9
	▲▲	536149-5
		FINISH ASSY PART NUMBER

DO NOT SCALE PRINT. UNLESS SPECIFIED DIMENSIONS IN mm [INCHES]			PART NO		
DR L. BRINER	2/24/92		AMP Incorporated Harrisburg, PA 17105-3608		
CHK D.C. RUBENDALL	3/8/92		PIN ASSEMBLY, ENHANCED EUROCARD WITH TWO EXTERNAL PLATES AND BOARD-LOCKS		
APP D.C. RUBENDALL	3/8/92		NAME		
MATERIAL			AMP	D.C. RUBENDALL	3/8/92
HSG: ▲	-		PRODUCT SPEC		
POST: ▲	-		APPLICATION SPEC		
FINISH			WEIGHT		
GROUND PLATE: ▲▲			SIZE	CAGE CODE	DRAWING NO
			D	00779	536149
			SCALE	4:1	SHEET 1 OF 1

CUSTOMER DRAWING