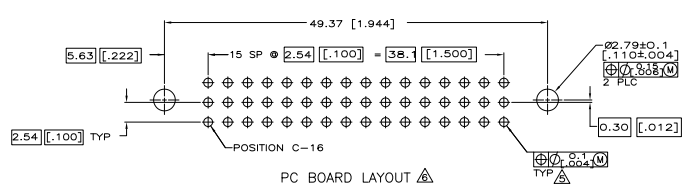
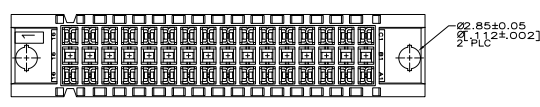
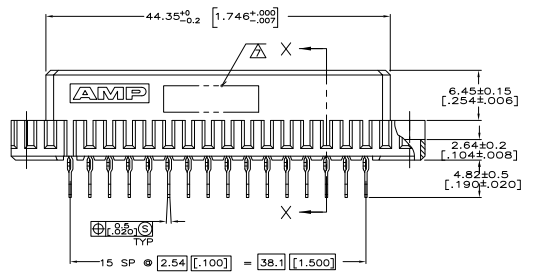
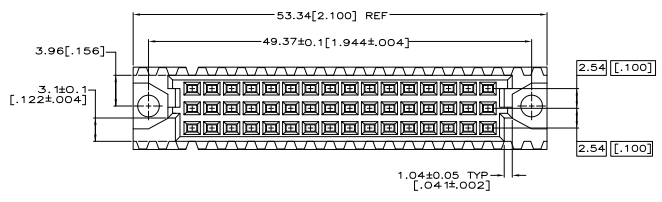
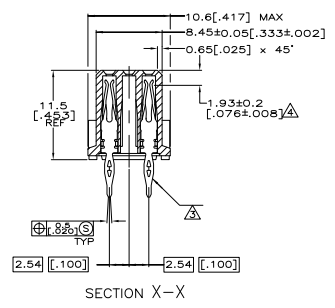


REV	DATE	DESCRIPTION	BY	APP
AD 25				
A		RELEASE PER ECO-12-002590		



- △ HOUSING MATERIAL: GLASS-FILLED POLYMER.
- △ CONTACT MATERIAL: COPPER ALLOY.
- △ CONTACT FINISH: DIN 41612 CLASS 2 IN CONTACT AREA. TIN PLATE ON TAILS.
- △ ACTION POINT.
- △ ACTION PIN POSTS REQUIRE 1.57 [0.62] MIN THICK PC BOARD. RECOMMENDED PC BOARD HOLES ARE Ø1.15 ± 0.2 [0.453 ± 0.01] DRILLED HOLE WITH 0.2-0.07 [0.01-0.03] COPPER AND 0.008 [0.003] MIN TIN-LEAD PLATING. FINISHED HOLE AFTER PLATING, Ø0.94-1.09 [0.37-0.43].
- △ CENTER ROW OF PLATED THRU HOLES NOT REQUIRED FOR THIS CONNECTOR LOAD PATTERN.
- △ PART NUMBER, DATE CODE IDENTIFICATION, CSA LOGO IN THIS APPROXIMATE AREA, ON REVERSE SIDE.
- △ OBSOLETE PARTS: OBSOLETE CIS STREAMLINING PER D.RENAUD/D.SINISI



SECTION X-X

NOTES	POSITIONS LOADED	ROWS LOADED	POSITION	ASSY PART NUMBER
1 THRU 16	X - X	32	5535068-5	
1 THRU 16	X - X	32	5535068-4	

THIS DRAWING IS A CONTROLLED DOCUMENT. IT IS THE PROPERTY OF TE Connectivity. IT IS TO BE KEPT IN CONFIDENTIALITY AND NOT TO BE REPRODUCED OR TRANSMITTED IN ANY FORM OR BY ANY MEANS, ELECTRONIC OR MECHANICAL, INCLUDING PHOTOCOPYING, RECORDING, OR BY ANY INFORMATION STORAGE AND RETRIEVAL SYSTEM. WITHOUT THE WRITTEN PERMISSION OF TE Connectivity.

ASSEMBLY RECEPTACLE EUROCARD, 1/2C, A and C, 32/48 POSITION, 4.53 (180) TOLLLESS, PRESS-FIT.

DATE: 00779 (C) 5535068

CUSTOMER DRAWING