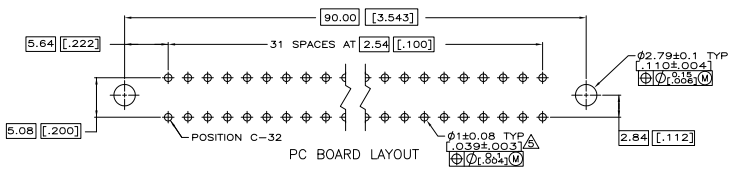
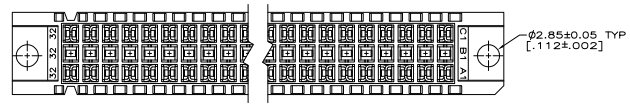
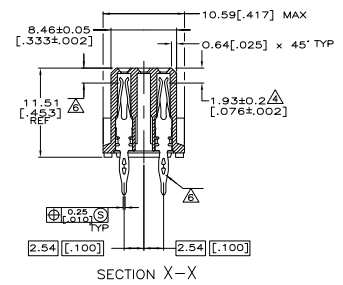
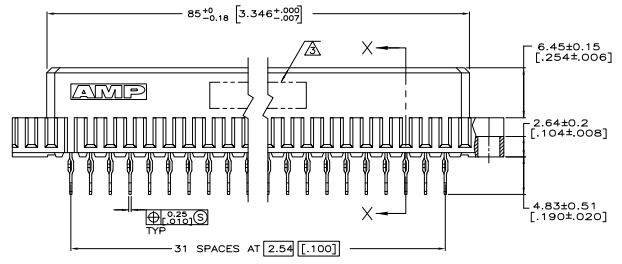
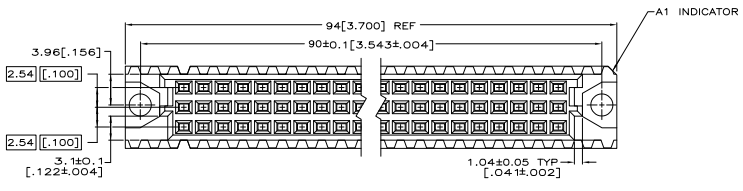


- △ HOUSING MATERIAL: GLASS-FILLED POLYMER.
- △ CONTACT MATERIAL: COPPER ALLOY.
- △ PART NUMBER, DATE CODE IDENTIFICATION, CSA LOGO IN THIS APPROXIMATE AREA.
- △ POINT OF MEASUREMENT FOR GOLD.
- △ ACTION PIN POSTS REQUIRE 1.57[.062] MIN THICK PC BOARD. RECOMMENDED PC BOARD HOLES ARE Ø 1.91±0.2 [.0453±.001] DRILLED HOLE WITH 0.2-0.07[.001-0.003] COPPER AND 0.008[.0003] MIN TIN-LEAD PLATING. FINISHED HOLE AFTER PLATING: Ø0.94-1.09[.057-.043].
- △ CONTACT FINISH: DIN 41612 CLASS 2 ON CONTACT AREA. TIN PLATE ON POSTS.



1 THRU 32	X	-	X	64	5535059-5
1 THRU 32	X	-	X	64	5535059-4
FINISH	POSITIONS LOADED	C	B	A	LOADED POSITION
		ROWS	LOADED		ASSY PART NUMBER

THIS DRAWING IS A CONTROLLED DOCUMENT. IN POLYCHROME SEARCH **Extron** TDS Electronics Corporation Harrisburg, Pa 17102-3608

DATE: 05/12/05
 DRAWN BY: [Signature]
 CHECKED BY: [Signature]
 APPROVED BY: [Signature]

ASSEMBLY, RECEPTACLE, EUROCARD, TYPE C, LEAD-FREE, X and G, 64/96 POSITION, 4.83[.190] TOOLLESS PRESS-FIT.

TITLE: CASE CODE: [Signature] PART NUMBER: 5535059

CUSTOMER DRAWING: [Signature] DATE: 4/1 SIZE: 1 1/2 1/2