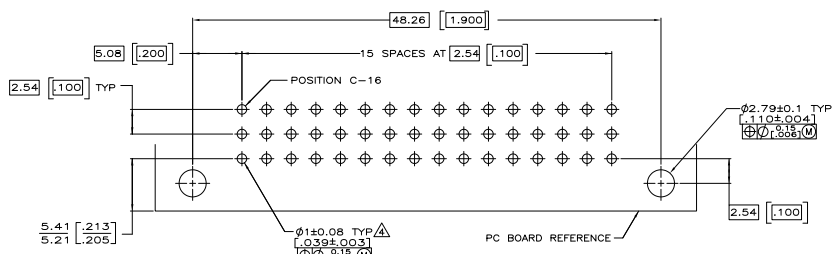
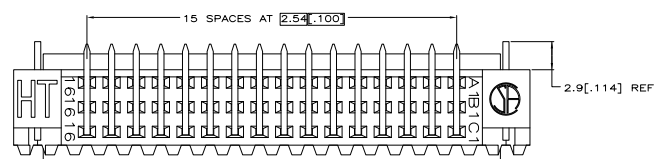
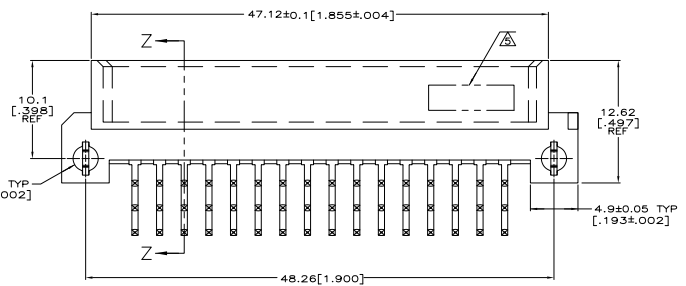
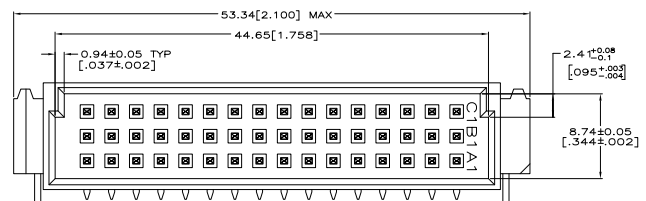


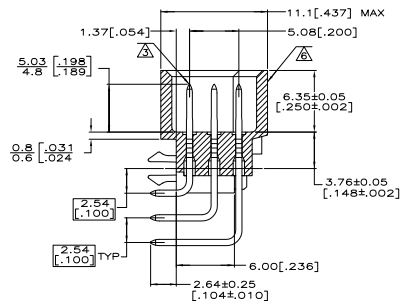
THIS DRAWING IS UNPUBLISHED
 ALL RIGHTS RESERVED

REV	DATE	DESCRIPTION	BY	CHK	APP
AD 00					
01	REV PER ECU-07-01987				COMAR2007 BC AS



PC BOARD LAYOUT
 RECOMMENDED PC BOARD THICKNESS 1.57 [0.62]

- △ HOUSING MATERIAL: GLASS-FILLED POLYMER.
- △ POST MATERIAL: COPPER ALLOY.
- △ POST FINISH: DIN 41612 CLASS 2 IN CONTACT AREA. TIN PLATE ON POSTS.
- △ RECOMMENDED HOLE SIZE FOR MANUAL APPLICATION OF CONNECTOR ONTO PC BOARD.
- △ PART NUMBER, DATE CODE MARKED THIS APPROXIMATE AREA.
- △ MARKING ON THIS SIDE.



SECTION Z-Z

5148020-5
 PART NO

THIS DRAWING IS A CONTROLLED DOCUMENT.		REV	DATE	DESCRIPTION	BY	CHK	APP
REV	DATE						
01	REV PER ECU-07-01987						

UNLESS OTHERWISE SPECIFIED:	UNLESS OTHERWISE SPECIFIED:	UNLESS OTHERWISE SPECIFIED:	UNLESS OTHERWISE SPECIFIED:
DIMENSIONS IN MILLIMETERS	UNLESS OTHERWISE SPECIFIED:	UNLESS OTHERWISE SPECIFIED:	UNLESS OTHERWISE SPECIFIED:
FRONT VIEW	FRONT VIEW	FRONT VIEW	FRONT VIEW
TOP VIEW	TOP VIEW	TOP VIEW	TOP VIEW
RIGHT SIDE VIEW	RIGHT SIDE VIEW	RIGHT SIDE VIEW	RIGHT SIDE VIEW
LEFT SIDE VIEW	LEFT SIDE VIEW	LEFT SIDE VIEW	LEFT SIDE VIEW
BACK VIEW	BACK VIEW	BACK VIEW	BACK VIEW
ISOMETRIC VIEW	ISOMETRIC VIEW	ISOMETRIC VIEW	ISOMETRIC VIEW

DATE	DATE	DATE	DATE
DATE	DATE	DATE	DATE
DATE	DATE	DATE	DATE
DATE	DATE	DATE	DATE

DATE	DATE	DATE	DATE
DATE	DATE	DATE	DATE
DATE	DATE	DATE	DATE
DATE	DATE	DATE	DATE
DATE	DATE	DATE	DATE