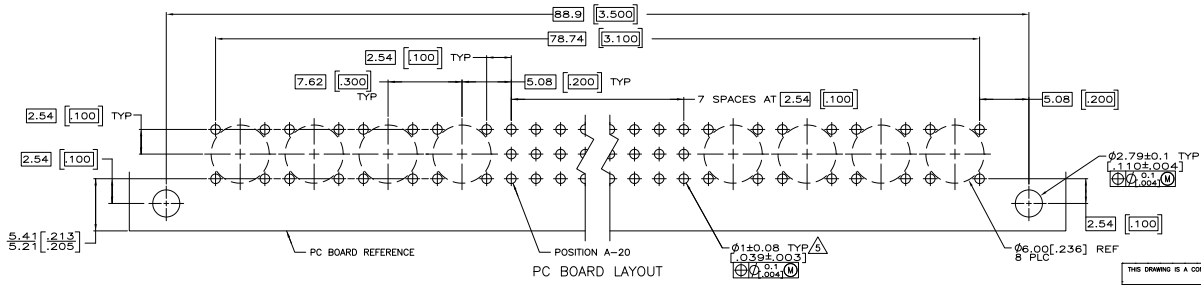
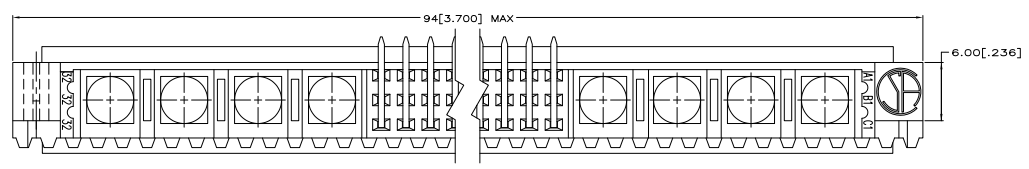
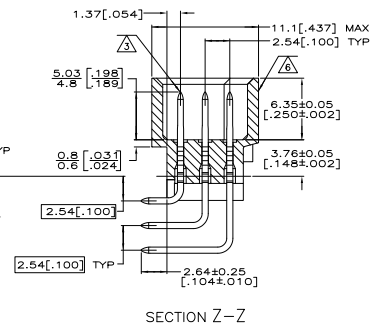
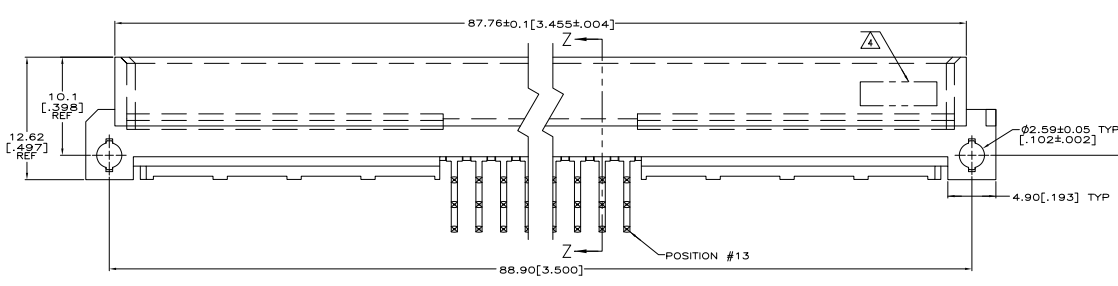
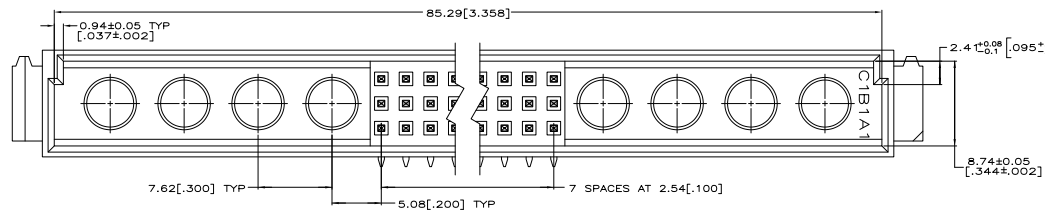


THIS DRAWING IS UNPUBLISHED
 ALL RIGHTS RESERVED

REV	DATE	DESCRIPTION	BY	APP'D
AD 25				
01		REVISED FOR ECO-08-013375		

- △ HOUSING MATERIAL: GLASS-FILLED POLYMER.
- △ POST MATERIAL: COPPER ALLOY.
- △ POST FINISH: DIN 41612 CLASS 2 IN CONTACT AREA. TIN PLATE ON POSTS.
- △ PART NUMBER AND DATE CODE IN THIS APPROXIMATE AREA.
- △ RECOMMENDED HOLE SIZE FOR MANUAL APPLICATION OF CONNECTOR ONTO PC BOARD.
- △ MARKING ON THIS SIDE.



5148414-5
 PART NUMBER

THIS DRAWING IS A CONTROLLED DOCUMENT.		REV		DATE		DESCRIPTION		BY		APP'D	
DESCRIPTION	ASSEMBLY, PIN, RIGHT ANGLE, TYPE M, EUROCARD, 24+8, SOLDER, 2.64 [104]	REV	DATE	REV	DATE	REV	DATE	REV	DATE	REV	DATE
DATE	00779	DATE	00779	DATE	00779	DATE	00779	DATE	00779	DATE	00779
CUSTOMER DRAWING											

44 485 REV 01/2005