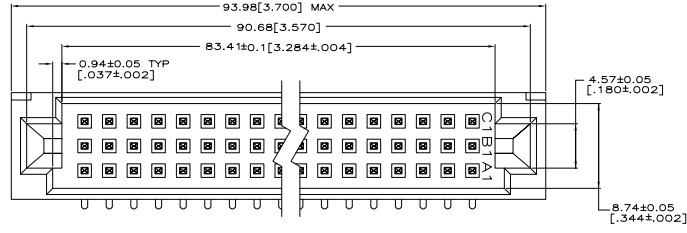
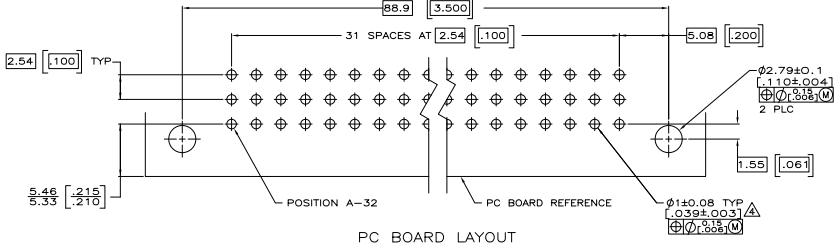
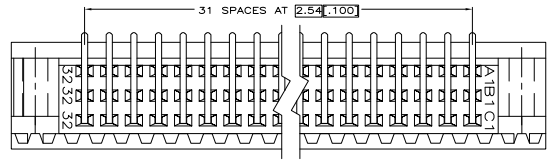
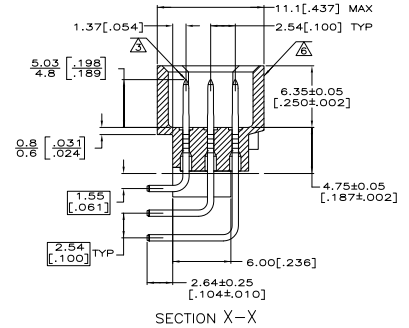
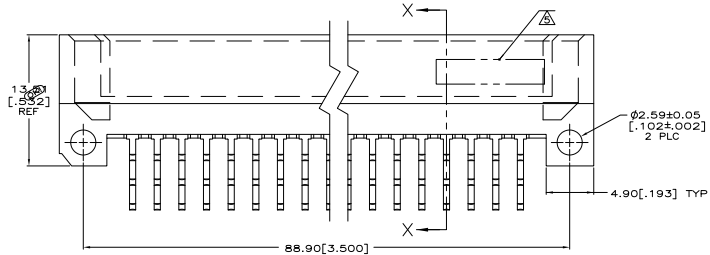


REV	DATE	DESCRIPTION	BY	CHK	APP
AD 00					
01		REV PER ESD-07-001987			



- △ HOUSING MATERIAL: GLASS-FILLED POLYMER.
- △ POST MATERIAL: COPPER ALLOY.
- △ POST FINISH: DIN 41612 CLASS 2 IN CONTACT AREA. TIN PLATE ON POSTS.
- △ RECOMMENDED HOLE SIZE FOR MANUAL APPLICATION OF CONNECTOR ONTO PC BOARD.
- △ [PART NUMBER, DATE CODE] MARKED THIS APPROXIMATE AREA.
- △ MARKING ON THIS SIDE.



5148003-5
 PART NO.

THIS DRAWING IS A CONTROLLED DOCUMENT.		REV	DATE	DESCRIPTION	BY	CHK	APP
1	AD 00						
DIMENSIONS		UNLESS OTHERWISE SPECIFIED	IN	INCHES	UNLESS OTHERWISE SPECIFIED	MM	MILLIMETERS
1	AD 00						
TOLERANCES		UNLESS OTHERWISE SPECIFIED	IN	INCHES	UNLESS OTHERWISE SPECIFIED	MM	MILLIMETERS
1	AD 00						
MATERIALS		UNLESS OTHERWISE SPECIFIED	IN	INCHES	UNLESS OTHERWISE SPECIFIED	MM	MILLIMETERS
1	AD 00						
FINISHES		UNLESS OTHERWISE SPECIFIED	IN	INCHES	UNLESS OTHERWISE SPECIFIED	MM	MILLIMETERS
1	AD 00						
MARKINGS		UNLESS OTHERWISE SPECIFIED	IN	INCHES	UNLESS OTHERWISE SPECIFIED	MM	MILLIMETERS
1	AD 00						
DRAWING NO.		DATE		REV		BY	
A100779		09-01-00		01		AD	
CUSTOMER DRAWING		DATE		REV		BY	
A100779		09-01-00		01		AD	

Two Electronics Corporation
 Harrisburg, PA 17105-3608

ASSEMBLY, PIN, EUROCARD, TYPE C,
 96 POSITION, 2.64(.104) SOLDER POST
 WITH GUIDE FEATURES.

DATE: 09-01-00
 REV: 01
 DRAWING NO: A100779
 PART NO: 5148003