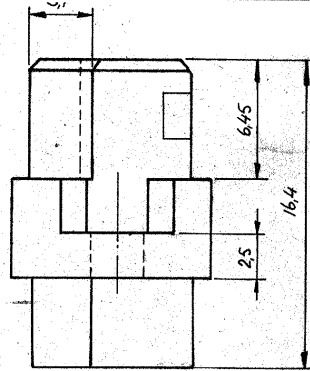
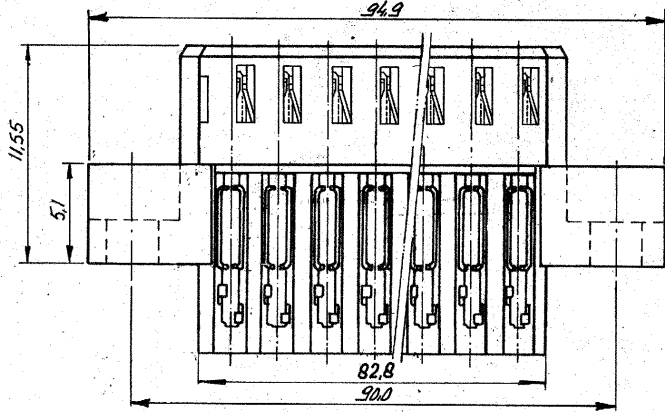
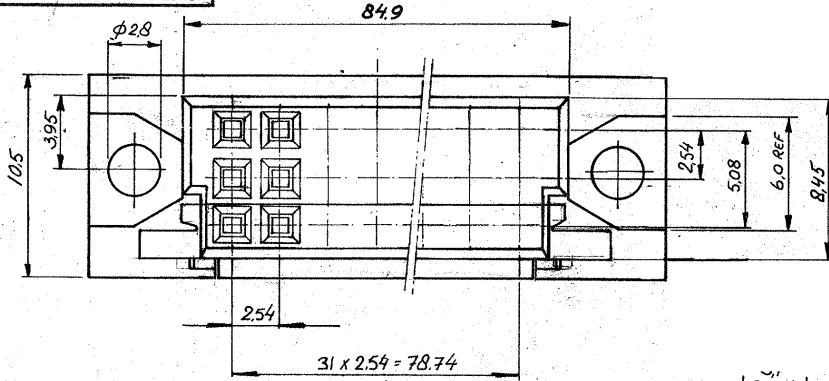


DRAWING MADE IN AMERICAN PROJECTION



	166873-1	Housing: Glassfilled Polyester (Gray) Contacts: Phosphorbronze	Contact area: 2.0 μ Au over 12.5 μ Ni Remainder TIN plating.
	166873-2	SAME AS -1	SAME AS -1 ONLY ON CONTACT AREA DUAL ALL OVER 12.5 μ Ni.
OBSOLETE	166873-3	SAME AS -1	SAME AS -1 ONLY ON CONTACT AREA 12.5 μ Au OVER 12.5 μ Ni
	166873-4		SAME AS -1
	166873-5		SAME AS -2
	166873-6	SAME AS -1	SAME AS -3
	1-166873-1		SAME AS -2
	166873-8		SAME AS -2
	PARTNUMBER	MATERIAL	PLATING

- NOTES:**
- COVER AN. 826196-1 CAN BE USED.
  - CONNECTOR PRINTED WITH PARTNUMBER 166873-...
  - AFTER CRIPPING THE CONTACTS IN ROW B RESEMBLE THE SINGLE ROW CONN. ASSY AND DUAL ROW CONN. ASSY UNTO EACH OTHER.

G1	ECR-08-014461	23-03-09	AEG	WRV
G	ECR-06-012362	23-5-06	BM	JJB
LTR	DESCRIPTION	DATE	DWN	APRD

REVISIONS

CUSTOMER COPY FOR REFERENCE ONLY

OR DATE  
CHK. TILGRUNSVEN 7-9-81  
DE DATE 5/9-81  
APP DATE 15-1-81

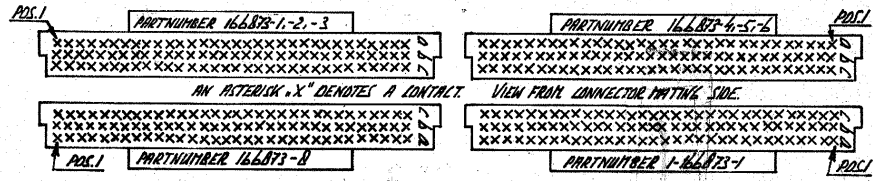
© 1987 BY AMP-HOLLAND N.V. ALL RIGHTS RESERVED. AMP PRODUCTS COVERED BY PATENTS AND/OR PATENTS PENDING.

WIRE RANGE AWG 26-22 INSUL. RANGE Ø 1.2 MAX. FIRST USED  
SCALE ≈ 5:1 SIZE NO B C-166873

NAME 96 POS. BACK PANEL M.T. CONNECTOR

AMP-HOLLAND N.V. 's-Hertogenbosch

REV G1



DIMENSIONS IN P.I.C. DO NOT SCALE PRINT