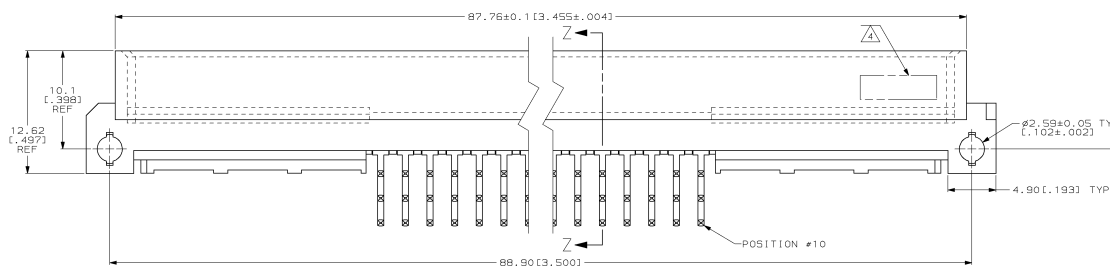
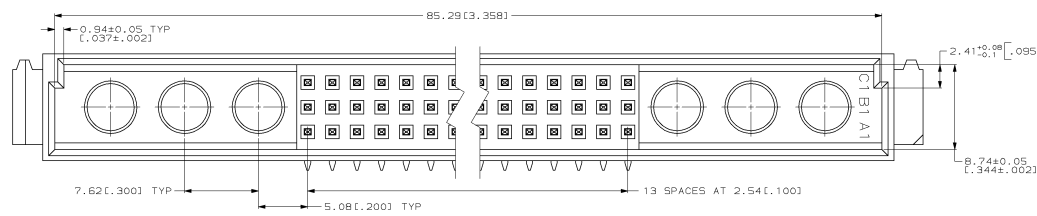


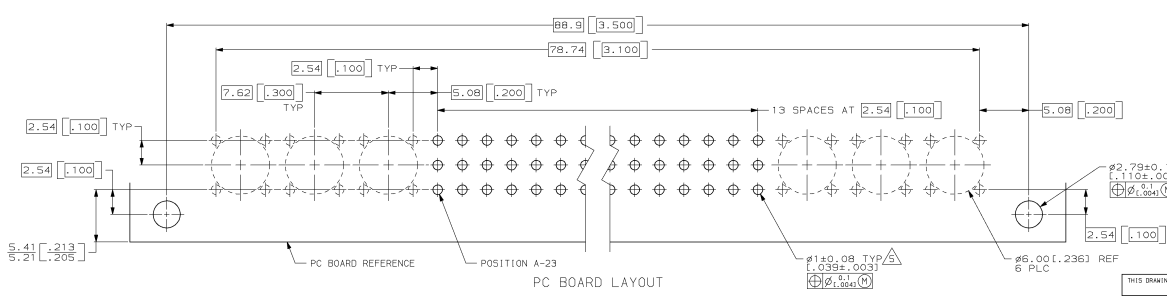
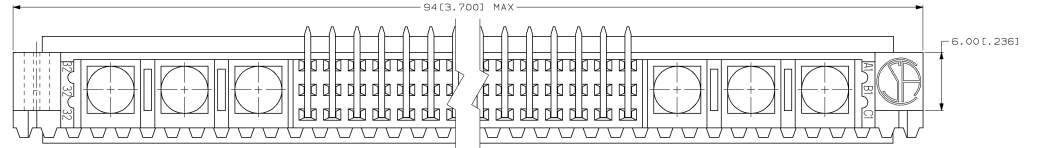
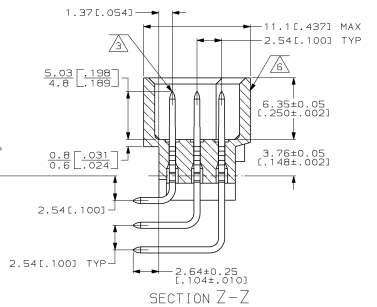
THIS DRAWING IS UNCONTROLLED
BY AMP INCORPORATED. ALL DIMENSIONS ARE IN MILLIMETERS

REV	DATE	BY	APP	DESCRIPTION
AD	25	Q		BROWN

REVISIONS		DATE	BY	APP



- HOUSING MATERIAL: GLASS-FILLED POLYESTER. COLOR: GRAY.
- POST MATERIAL: BRASS.
- POST FINISH: DIN 41612 CLASS 2 IN CONTACT AREA. TIN-LEAD PLATE ON POSTS.
- PART NUMBER AND DATE HOT STAMPED IN THIS APPROXIMATE AREA.
- RECOMMENDED HOLE SIZE FOR MANUAL APPLICATION OF CONNECTOR ONTO PC BOARD.
- HOT STAMPING ON THIS SIDE.



REV	DATE	BY	APP	DESCRIPTION

THIS DRAWING IS A CONTROLLED DOCUMENT.		DATE	BY	APP
DESIGNED	AMP INCORPORATED	12/12/97	J. BREWER	
DRAWN	AMP INCORPORATED	12/12/97	R. PATTERSON	
CHECKED	AMP INCORPORATED	12/12/97	R. PATTERSON	
APPROVED	AMP INCORPORATED	12/12/97	R. PATTERSON	

AMP INCORPORATED
Harrisburg, PA 17105-3608
PART NUMBER: 148413-5
PIN ASSEMBLY, EUROCARD,
TYPE M, 42 + 6 POSITION
SIZE USE CASE: drawing no. A100779
REVISION: 148413
REVISIONS: 1 1 1 Q