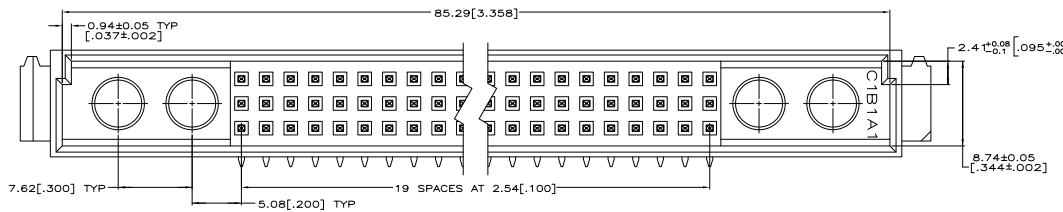
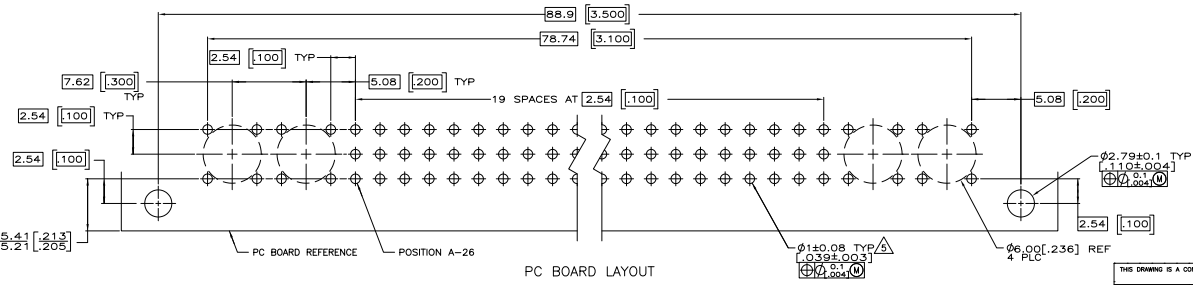
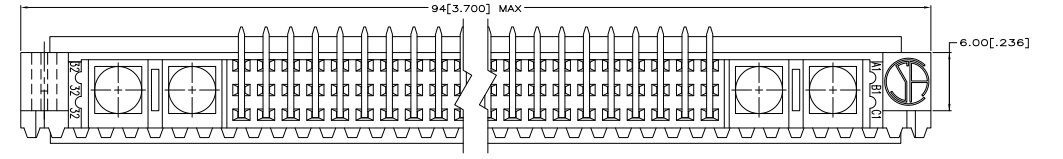
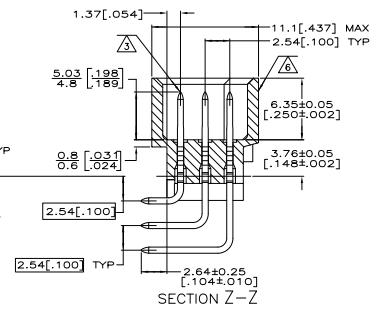
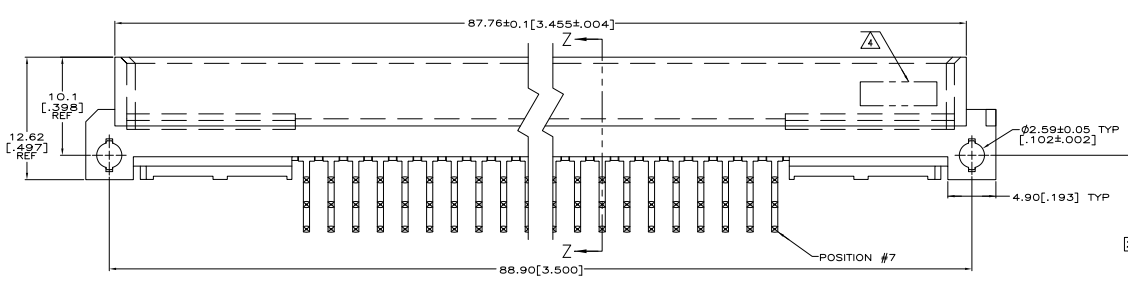


THIS DRAWING IS UNPUBLISHED  
 ALL RIGHTS RESERVED

REV	DATE	DESCRIPTION	BY	CHK	APP
AD 25					
01		REVISED PER ECO-08-013375			



- △ HOUSING MATERIAL: GLASS-FILLED POLYMER.
- △ POST MATERIAL: COPPER ALLOY.
- △ POST FINISH: DIN 41612 CLASS 2 IN CONTACT AREA. TIN PLATE ON POSTS.
- △ PART NUMBER AND DATE CODE IN THIS APPROXIMATE AREA.
- △ RECOMMENDED HOLE SIZE FOR MANUAL APPLICATION OF CONNECTOR ONTO PC BOARD.
- △ MARKING ON THIS SIDE.



THIS DRAWING IS A CONTROLLED DOCUMENT.		REV	DATE	DESCRIPTION	BY	CHK	APP
REV	DATE						
01							

INCHES	FRANCESE UNITS	REV	DATE	DESCRIPTION	BY	CHK	APP
mm (INCHES)	mm (FRANCESE UNITS)						
01							

5148412-5		PART NUMBER	
THIS DRAWING IS A CONTROLLED DOCUMENT.			
Yield Electronics Corporation Harrisburg, PA 17105-3608			
ASSEMBLY, PIN, RIGHT ANGLE, TYPE M, EUROCARD, 60+4, SOLDER, 2.64[104]			
SIZE	DATE	DATE	DRAWING NO.
A1	00779	05148412	
CUSTOMER DRAWING	DATE	REV	BY
	5.1	1	DB

WIP 480 REV 01/2005