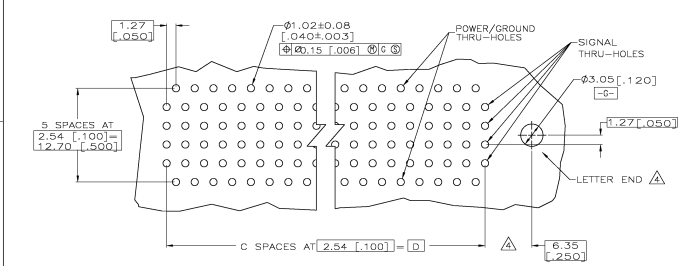
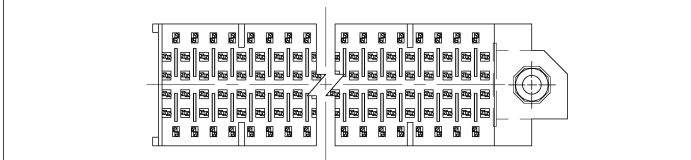
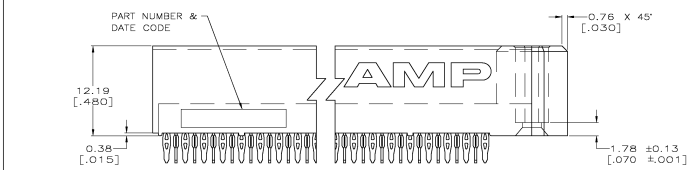
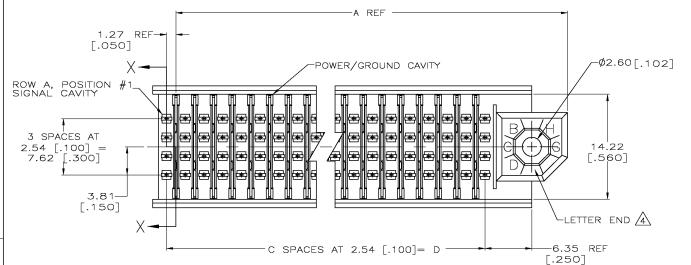


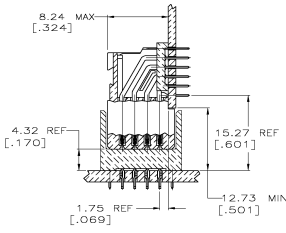
FOR STANDARD DIMENSIONS: HEADERS FOR HOUSING
 Connect - at top, electrical connection - at bottom, reference

REV	DATE	DESCRIPTION	BY	CHK	APP
AD	47	REVISIONS			
E		REVISED PER EC 0512-0219-03			06FERON MJM GG

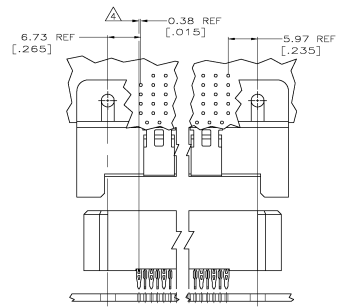


RECOMMENDED CIRCUIT PATTERN
 PER ANSI/IPC-D-300 TYPE II, CLASS C
 (COMPONENT SIDE)

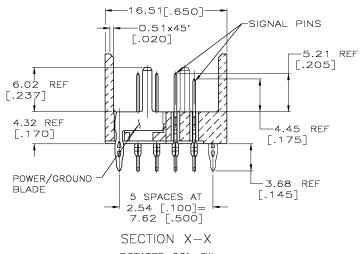
- △ HOUSING & ORGANIZER MATERIAL: LIQUID CRYSTAL POLYMER PER ASTM D5138-LCP000G30A32250, COLOR: BLACK.
- △ SIGNAL & POWER/GROUND CONTACT MATERIAL: PHOSPHOR BRONZE, PER CDA CS1100.
- △ CONTACT FINISH:
 ON MATING SURFACES—
 GOLD FLASH PER AMP INCORPORATED SPECIFICATION OVER 0.00076 [.000030] MIN PALLADIUM-NICKEL PER AMP INCORPORATED SPECIFICATION OVER 0.00127 [.000050] MIN. NICKEL PER FEDERAL SPECIFICATION QQ-N-290, CLASS: 2, GRADE: n/g.
 ON LEADS—
 0.00055 [.000025] MIN. TIN-LEAD PER MIL-P-81728, DIER 0.00127 [.000050] MIN. NICKEL PER FEDERAL SPECIFICATION QQ-N-290, CLASS: 2, GRADE: n/g.
- △ RECEPTACLE ASSEMBLY LEADS ARE OFFSET .015 TOWARD THE LETTER END OF THE CAVITY CENTERLINE. THE PIN ASSEMBLY LEADS ARE IN LINE WITH THE CAVITY CENTERLINE.



REFERENCE
 MATED CROSS SECTION
 SCALE 2:1



REFERENCE
 MATED CONNECTOR THRU HOLE OFFSET
 SCALE 2:1



SECTION X-X
 ROTATED 90° CW

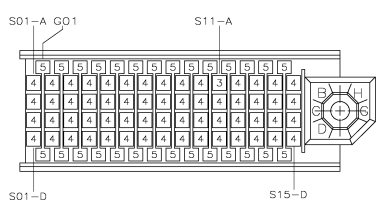
48.28 [1.900]	19	—	60.55 [2.386]	80	646617-2
35.56 [1.400]	14	—	47.85 [1.884]	60	646617-1
	D			A	

THIS DRAWING IS A CONTROLLED DOCUMENT		REVISED BY	REVISED DATE	REVISED BY	REVISED DATE
APPROVED BY	DESIGNED BY	APPROVED BY	DESIGNED BY	APPROVED BY	DESIGNED BY
DATE	DATE	DATE	DATE	DATE	DATE
108-1244	104-1085	108-1244	104-1085	108-1244	104-1085
CUSTOMER DRAWING		SCALE 4:1		REV 1 OF 2	

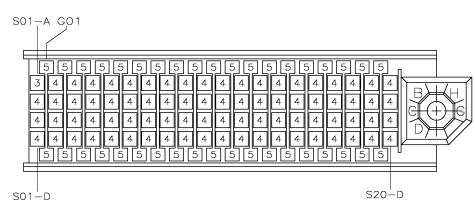
48.28 [1.900] 19 — 60.55 [2.386] 80 646617-2
 35.56 [1.400] 14 — 47.85 [1.884] 60 646617-1
 D C — A NO. OF SIGNAL PINS PART NO

THIS DRAWING IS A CONTROLLED DOCUMENT
 APPROVED BY: [Signature] DESIGNED BY: [Signature]
 DATE: 108-1244 DATE: 104-1085
 CUSTOMER DRAWING SCALE 4:1 REV 1 OF 2

2-PACK Stripline 100 PIN HEADER SUB-ASSEMBLY
 RIGHT END MODULE
 3.68 [.145] ACTION PIN LEAD LENGTH



646617-1 SUB-ASSEMBLY
(60 POSITIONS)



646617-2 SUB-ASSEMBLY
(80 POSITIONS)

POWER/GROUND CONTACT
LOAD PATTERN
(MATING FACE)

ITEM DESCRIPTION	LEAD LENGTH REF	POST LENGTH REF	ITEM NUMBER
POWER/GROUND	.145	.237	5
SIGNAL	.145	.205	4
SIGNAL	.145	.175	3

THIS DRAWING IS A CONTROLLED DOCUMENT

DESIGNED BY	REVISIONS	DATE	BY	APP

Electronics
 Type Electronics Corporation
 Harrisburg, PA 17105-3608

2-PACK Stripline 100, PIN HEADER SUB-ASSEMBLY
 RIGHT END MODULE
 3.88 [145] ACTION PIN LEAD LENGTH

PART NO. 646617
 REV. 001 (REV. 001)
 DATE 10-10-85

CUSTOMER DRAWING
 A1 00779 ©-646617
 DATE 4-11 2 OF 2