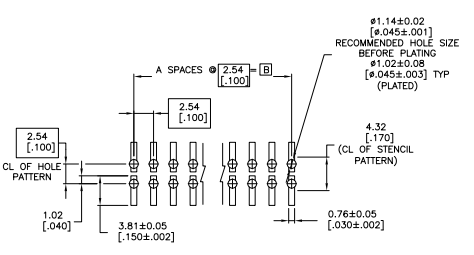
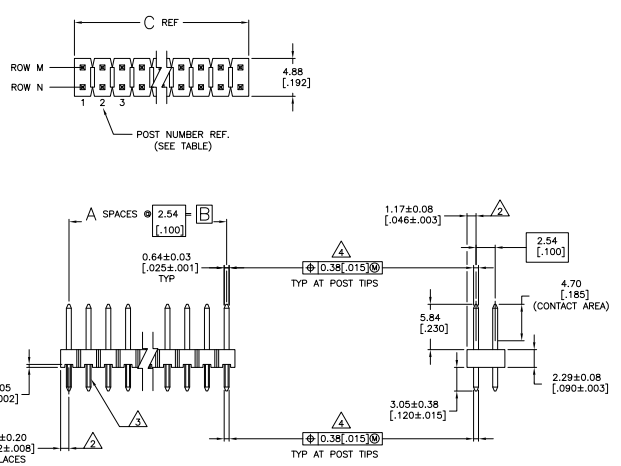


THIS DRAWING IS UNCLASSIFIED
 UNLESS INDICATED OTHERWISE
 ALL RIGHTS RESERVED

REV	DATE	DESCRIPTION	BY	CHK	APP
AD	00	REVISED PER EDD-11-00927	11MM11	JK	HMR



RECOMMENDED PC BOARD MOUNTING DIMENSIONS
 FOR .063[1.60] THICK PC BOARD AND
 .012[.305] STENCIL THICK

REV	DATE	DESCRIPTION	BY	CHK	APP
△	10119	99.08	39	80	4-146269-0
△	3984	39.00	38	78	3-146269-0
△	3984	39.88	37	76	3-146269-6
△	3984	39.15	36	74	3-146269-7
△	3984	39.80	35	72	3-146269-6
△	3984	39.00	34	70	3-146269-6
△	3984	39.00	33	68	3-146269-4
△	3984	39.00	32	66	3-146269-3
△	3984	39.00	31	64	3-146269-2
△	3984	39.00	30	62	3-146269-1
△	3984	39.00	29	60	3-146269-0
△	3984	39.00	28	58	2-146269-0
△	3984	39.00	27	56	2-146269-8
△	3984	39.00	26	54	2-146269-7
△	3984	39.00	25	52	2-146269-6
△	3984	39.00	24	50	2-146269-5
△	3984	39.00	23	48	2-146269-4
△	3984	39.00	22	46	2-146269-3
△	3984	39.00	21	44	2-146269-2
△	3984	39.00	20	42	2-146269-1
△	3984	39.00	19	40	2-146269-0
△	3984	39.00	18	38	1-146269-9
△	3984	39.00	17	36	1-146269-8
△	3984	39.00	16	34	1-146269-7
△	3984	39.00	15	32	1-146269-6
△	3984	39.00	14	30	1-146269-5
△	3984	39.00	13	28	1-146269-4
△	3984	39.00	12	26	1-146269-3
△	3984	39.00	11	24	1-146269-2
△	3984	39.00	10	22	1-146269-1
△	3984	39.00	9	20	1-146269-0
△	3984	39.00	8	18	1-146269-9
△	3984	39.00	7	16	1-146269-8
△	3984	39.00	6	14	1-146269-7
△	3984	39.00	5	12	1-146269-6
△	3984	39.00	4	10	1-146269-5
△	3984	39.00	3	8	1-146269-4
△	3984	39.00	2	6	1-146269-3
△	3984	39.00	1	4	1-146269-2
△	3984	39.00	-	2	1-146269-1

FINISH	C	B	A	NO. OF POSITIONS	PART NUMBER
△ SUPSD BY 5-146269-1					

THIS DRAWING IS A CONTROLLED DOCUMENT.		BY	DATE	REVISED
INCHES	MM	DATE	DATE	DATE
1/16	1.588	1/16	1.588	1/16
1/32	3.175	1/32	3.175	1/32
1/64	6.350	1/64	6.350	1/64
3/128	15.875	3/128	15.875	3/128
1/8	31.750	1/8	31.750	1/8
3/16	47.625	3/16	47.625	3/16
1/4	63.500	1/4	63.500	1/4
5/16	79.375	5/16	79.375	5/16
3/8	95.250	3/8	95.250	3/8
7/16	111.125	7/16	111.125	7/16
1/2	127.000	1/2	127.000	1/2
5/8	158.750	5/8	158.750	5/8
3/4	190.500	3/4	190.500	3/4
7/8	222.250	7/8	222.250	7/8
1	254.000	1	254.000	1

THIS DRAWING IS UNPUBLISHED
 ALL RIGHTS RESERVED

REV	DATE	DESCRIPTION	BY	CHK	APP
AD 00		SEE SHEET 1			

- TRUE POSITION TOLERANCE OF THE POST TIPS APPLIES WHEN THE HEADER IS HELD FLAT AGAINST THE PRINTED CIRCUIT BOARD.
- THE NOTED DIMENSIONS APPLY AT THE INTERSECTION OF THE POST AND HOUSING.
- RETENTION FEATURES ON SOLDER TAILS, LOCATED AT MANUFACTURERS OPTION.
- $\phi 0.51(0.2030)$ FOR KINKED TAILS.
- HOUSING: LCP, COLOR-BLACK.
POST: PHOSPHOR BRONZE
- 0.000762[0.00030] GOLD IN CONTACT AREA.
0.00254-0.00508 [0.000100-0.000200] MATTE TIN-LEAD ON SOLDER TAIL,
ALL OVER 0.00127 [0.00050] NICKEL.
- 0.000762[0.00030] GOLD IN CONTACT AREA.
0.00254-0.00508 [0.000100-0.000200] MATTE TIN ON SOLDER TAIL,
ALL OVER 0.00127 [0.00050] NICKEL.
- OBSOLETE PARTS: OBSOLETE CIS STREAMLINING PER D.RENAUD/D.SINISI

REV	DATE	DESCRIPTION	BY	CHK	APP
39	80	9-146269-0			
OBSOLETE	38	78	-8-146269-9		
OBSOLETE	37	76	-8-146269-8		
OBSOLETE	36	74	-8-146269-7		
OBSOLETE	35	72	-8-146269-6		
OBSOLETE	34	70	-8-146269-5		
OBSOLETE	33	68	-8-146269-4		
OBSOLETE	32	66	-8-146269-3		
OBSOLETE	31	64	-8-146269-2		
OBSOLETE	30	62	-8-146269-1		
OBSOLETE	29	60	-8-146269-0		
OBSOLETE	28	58	-7-146269-9		
OBSOLETE	27	56	-7-146269-8		
OBSOLETE	26	54	-7-146269-7		
OBSOLETE	25	52	-7-146269-6		
OBSOLETE	24	50	-7-146269-5		
OBSOLETE	23	48	-7-146269-4		
OBSOLETE	22	46	-7-146269-3		
OBSOLETE	21	44	-7-146269-2		
OBSOLETE	20	42	-7-146269-1		
OBSOLETE	19	40	7-146269-0		
OBSOLETE	18	38	-6-146269-9		
OBSOLETE	17	36	-6-146269-8		
OBSOLETE	16	34	-6-146269-7		
OBSOLETE	15	32	-6-146269-6		
OBSOLETE	14	30	6-146269-5		
OBSOLETE	13	28	-6-146269-4		
OBSOLETE	12	26	-6-146269-3		
OBSOLETE	11	24	-6-146269-2		
OBSOLETE	10	22	-6-146269-1		
OBSOLETE	9	20	6-146269-0		
OBSOLETE	8	18	-5-146269-9		
OBSOLETE	7	16	5-146269-8		
OBSOLETE	6	14	5-146269-7		
OBSOLETE	5	12	5-146269-6		
OBSOLETE	4	10	5-146269-5		
OBSOLETE	3	8	5-146269-4		
OBSOLETE	2	6	5-146269-3		
OBSOLETE	1	4	-5-146269-2		
OBSOLETE	2	-	5-146269-1		

THIS DRAWING IS A CONTROLLED DOCUMENT.		DATE	BY	CHK	APP
DRAWN BY: [Signature]		DATE	BY	CHK	APP
CHECKED BY: [Signature]		DATE	BY	CHK	APP
APPROVED BY: [Signature]		DATE	BY	CHK	APP
TITLE: CUSTOMER DRAWING		DATE: 100779	BY: G=146269	CHK: [Signature]	APP: [Signature]