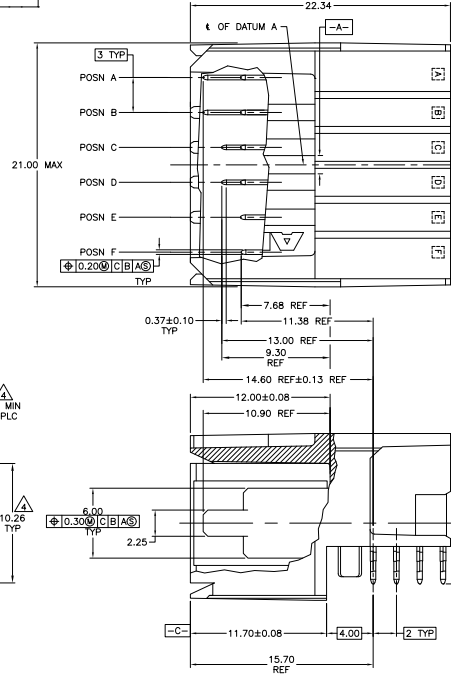
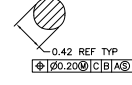


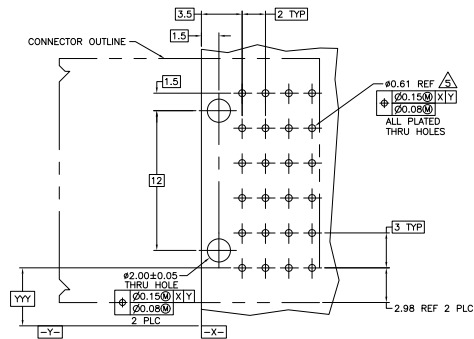
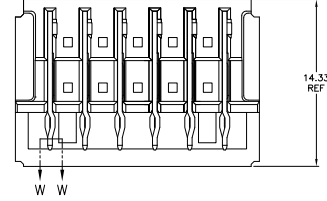
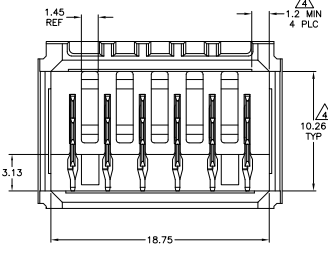
REV	DATE	DESCRIPTION	BY	CHK	APP
AD 00		REVISED PER EDO-11-000045			
C					



- ▲ MATERIAL: HOUSING: POLYESTER, GRAY, UL 94V-0. CONTACT: HIGH CURRENT COPPER ALLOY.
- ▲ FINISH: CONTACT MATING AREA: 1.27 $\mu$ m MIN GOLD OR 0.08 $\mu$ m MIN GOLD OVER 0.76 $\mu$ m MIN PALLADIUM-NICKEL. ACTION PIN AREA: 0.5 $\mu$ m MIN MATTE TIN PLATE, ALL OVER 1.27 $\mu$ m MIN NICKEL UNDERPLATE.
- ▲ FINISH: CONTACT LUBRICATION WITH BELLCORE APPROVED LUBRICANT. TECHNICAL REFERENCE: GR-1217-CORE, ISSUE 1, NOVEMBER 1995.
- ▲ THE 10.26 $\pm 0.13$  DIMENSION APPLIES IN THIS AREA.
- ▲ REFERENCE APPLICATION SPEC 114-1103 FOR RECOMMENDED PLATED THRU HOLE DIAMETER AND PLATING THICKNESSES.
- 6. CURRENT RATING 16A/CONTACT PER PRODUCT SPEC 108-1651.



SECTION W-W  
 SCALE 40:1



RECOMMENDED PCB HOLE LAYOUT

A	B	C,D,E,F	6	120956-2
A,B,C,D,E,F			6	120956-1
POSITIONS LOADED WITH 10.90 REF CONTACTS	POSITIONS LOADED WITH 9.30 REF CONTACTS	POSITIONS LOADED WITH 7.68 REF CONTACTS	NO OF LOADED POSITIONS	PART NUMBER
THIS DRAWING IS A CONTROLLED DOCUMENT.				
DRAWING NO. 100779		REVISED PER EDO-11-000045		
DESIGNED BY: J. PATTERSON		CHECKED BY: J. PATTERSON		
DATE: 10/27/95		DRAWN BY: J. PATTERSON		
SCALE: 1:1		CUSTOMER DRAWING		
DRAWING NO. A100779		REVISED PER EDO-11-000045		
DATE: 10/27/95		DRAWN BY: J. PATTERSON		
SCALE: 1:1		CUSTOMER DRAWING		