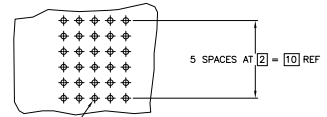
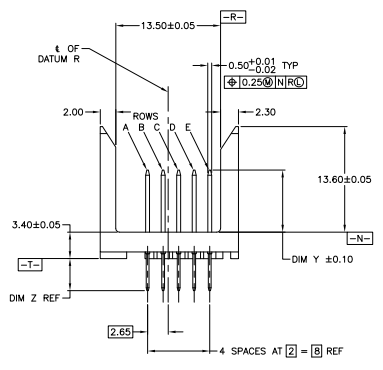
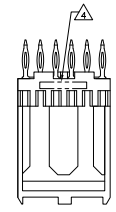
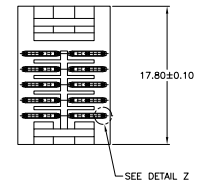
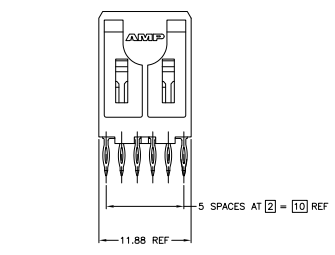
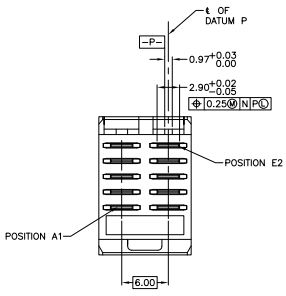
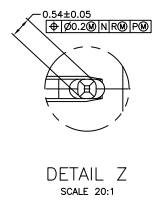


REV	DATE	DESCRIPTION	BY	CHK	APP
AD	00				
R2		REVISED PER ECO-09-024185			KK AEG



RECOMMENDED CIRCUIT PATTERN
 PER IPC-D300 TYPE II, CLASS C
 (COMPONENT SIDE)

- △ HOUSING MATERIAL: LIQUID CRYSTAL POLYMER, NATURAL.
- △ CONTACT MATERIAL: COPPER ALLOY.
- △ CONTACT FINISH:
 UNDERPLATE (ENTIRE CONTACT):
 0.00127 MIN NICKEL PER SAE-AMS-QQ-N-290
 ON MATING SURFACES:
 FLASH GOLD PER ASTM B 488, OVER
 0.00076 MIN PALLADIUM-NICKEL OVER UNDERPLATE, OR
 0.00076 MIN GOLD PER ASTM B 488 OVER UNDERPLATE.
 ON LEADS:
 0.00127 MIN TIN-LEAD OVER UNDERPLATE.
 LUBRICATION (MIN MATING SURFACES):
 SURFACE CONDITIONER AFTER PLATING.
- △ PART NUMBER AND DATE CODE IN APPROXIMATE AREA AS SHOWN.
- △ OBSOLETE PARTS: OBSOLETE CIS STREAMLINING PER D.RENAUD/D.SINISI



THIS DRAWING IS A CONTROLLED DOCUMENT.		DATE	1-17-88	TYS Electronics Corporation Harrisburg, PA 17105-3608	
DESIGNER	WILLIAMS	DATE	1-16-88	ASSEMBLY, PIN, VERTICAL	
DRW	108-1441	REV	1	5 ROW, POWER MODULE, PRESS FIT	
CHK	114-1075	DATE	1-17-88	LEADS, Z-FRAXX, 27mm, FB	
APP		REV		REVISED TO	
CUSTOMER DRAWING	A1	00779	536642	REV	
		DATE	4-1	SHEET	1 OF 2

AD	5.00	4.25
AC	8.00	4.25
AB	7.25	4.25
AA	6.50	4.25
CONTACT LETTER	DIM Z	DIM Z

E	AA	AA	E	536642-1
D	AA	AA	D	
C	AA	AA	C	
B	AA	AA	B	
A	AA	AA	A	
ROW	1	2	ROW	PART NUMBER
				CONTACT LOAD CHART

E	AA	AA	E	536642-5
D	AA	AA	D	
C	AA	AA	C	
B	AA	AA	B	
A	AA	AA	A	
ROW	1	2	ROW	PART NUMBER
				CONTACT LOAD CHART

E	AB	AB	E	1-536642-6
D	AB	AB	D	
C	AB	AB	C	
B	AB	AB	B	
A	AB	AB	A	
ROW	1	2	ROW	PART NUMBER
				OBSOLETE
				CONTACT LOAD CHART

SUPERSEDED BY 536642-4

E	AA	AA	E	536642-2
D	AA	AA	D	
C	AB	AB	C	
B	AC	AC	B	
A	AC	AC	A	
ROW	1	2	ROW	PART NUMBER
				CONTACT LOAD CHART

E	AA	AC	E	536642-6
D	AA	AC	D	
C	AA	AC	C	
B	AA	AC	B	
A	AA	AC	A	
ROW	1	2	ROW	PART NUMBER
				CONTACT LOAD CHART

E	AB	AB	E	2-536642-4
D	AB	AB	D	
C	AB	AB	C	
B	AA	AA	B	
A	AB	AB	A	
ROW	1	2	ROW	PART NUMBER
				CONTACT LOAD CHART

E			E	536642-3
D	AC	AC	D	
C	AB	AB	C	
B	AA	AA	B	
A	AC	AC	A	
ROW	1	2	ROW	PART NUMBER
				OBSOLETE
				CONTACT LOAD CHART

E	AC	AC	E	536642-7
D	AC	AC	D	
C	AC	AC	C	
B	AC	AC	B	
A	AC	AC	A	
ROW	1	2	ROW	PART NUMBER
				OBSOLETE
				CONTACT LOAD CHART

E	AC	AA	E	2-536642-5
D	AC	AA	D	
C	AC	AA	C	
B	AC	AA	B	
A	AC	AA	A	
ROW	1	2	ROW	PART NUMBER
				OBSOLETE
				CONTACT LOAD CHART

E	AA	AA	E	536642-4
D	AA	AA	D	
C	AB	AB	C	
B	AC	AC	B	
A	AC	AC	A	
ROW	1	2	ROW	PART NUMBER
				CONTACT LOAD CHART

E	AC	AC	E	1-536642-8
D	AB	AB	D	
C	AD	AD	C	
B			B	
A	AC	AC	A	
ROW	1	2	ROW	PART NUMBER
				OBSOLETE
				CONTACT LOAD CHART

THIS DRAWING IS A CONTROLLED DOCUMENT.		DATE: 11-17-08	REV: 11-18-08	SCALE: 1:1	ASSEMBLY: P/N, VERTICAL
DRAWING NO: 108-1441		REVISED BY: [Signature]		REVISED DATE: 11-18-08	
DRAWING NO: 114-1075		REVISED BY: [Signature]		REVISED DATE: 11-18-08	
CUSTOMER DRAWING: A1		DRAWING NO: 00779		REVISED DATE: 11-18-08	
DRAWING NO: 00779		REVISED BY: [Signature]		REVISED DATE: 11-18-08	
DRAWING NO: 00779		REVISED BY: [Signature]		REVISED DATE: 11-18-08	
DRAWING NO: 00779		REVISED BY: [Signature]		REVISED DATE: 11-18-08	