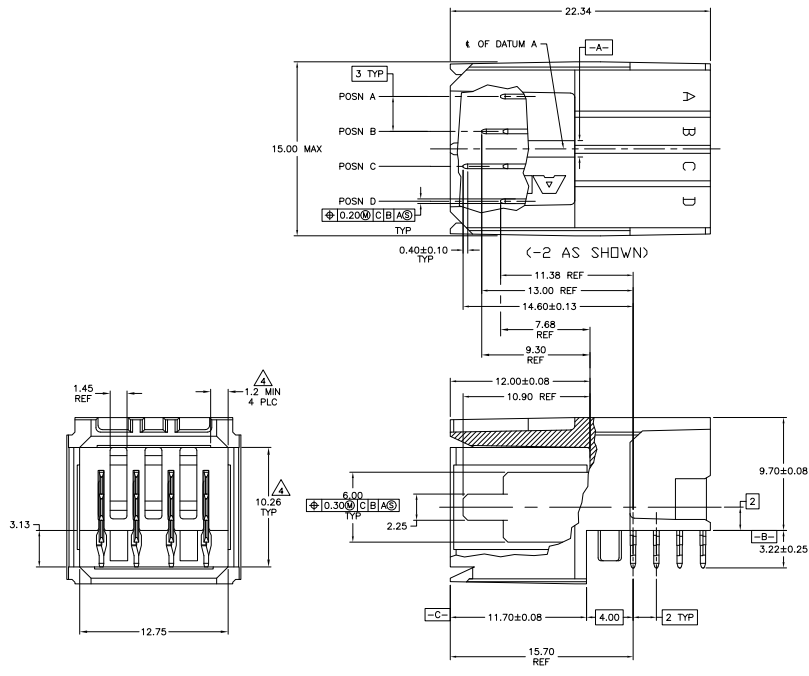
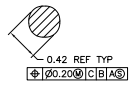
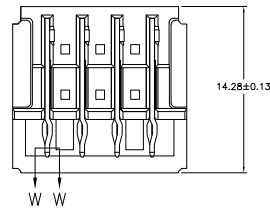


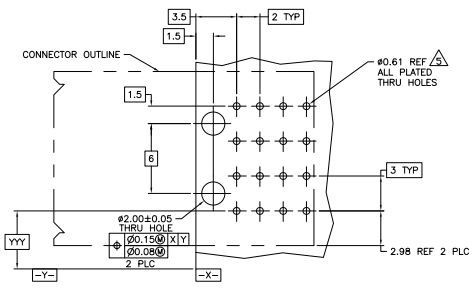
REV	DATE	DESCRIPTION	BY	CHK	APP
00					
01		REVISED PER EDD-11-004835	11MMR11	RK	HMR



- ⚠ MATERIAL: HOUSING: POLYESTER. COLOR: GRAY. UL 94V-0. CONTACT: PHOSPHOR BRONZE.
 - ⚠ FINISH: CONTACT MATING AREA: 1.27µm MIN GOLD OR 0.08µm MIN GOLD OVER 0.76µm MIN PALLADIUM-NICKEL. ACTION PIN AREA: 0.54µm MIN TIN PLATE. ALL OVER 1.27µm MIN NICKEL UNDERPLATE.
 - ⚠ FINISH: CONTACT LUBRICATION WITH BELLCORE APPROVED LUBRICANT. TECHNICAL REFERENCE: TR-NWT-001217 ISSUE 1, SEPT. 1992.
 - ⚠ THE 10.26±0.13 DIMENSION APPLIES IN THIS AREA.
 - ⚠ REFERENCE APPLICATION SPEC 114-1103 FOR RECOMMENDED PLATED THRU HOLE DIAMETER AND PLATING THICKNESS.
6. CURRENT RATING 10A/CONTACT PER PRODUCT SPEC 108-1651.



SECTION W-W
 SCALE 40:1



RECOMMENDED PCB HOLE LAYOUT

	A,D	B,C	D	4	5646954-5
A	B,C	D	D	4	5646954-4
A	C	B,D	D	4	5646954-3
C	B	A,D	D	4	5646954-2
A,B,C,D	-	-	D	4	5646954-1
POSITIONS LOADED WITH 10.90 REF CONTACTS	POSITIONS LOADED WITH 9.30 REF CONTACTS	POSITIONS LOADED WITH 7.68 REF CONTACTS	NO OF LOADED POSITIONS	PART NUMBER	

THIS DRAWING IS A CONTROLLED DOCUMENT.

TE Connectivity

ASSEMBLY, RIGHT ANGLE HEADER, W/ RETENTION PEGS, UNIVERSAL POWER MODULE

DATE: 00779
 DRAWING NO: 5646954

CUSTOMER DRAWING