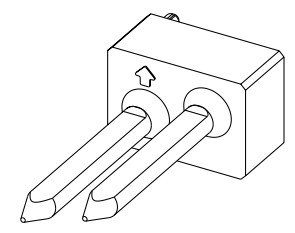
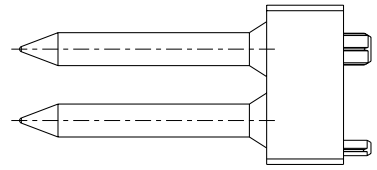
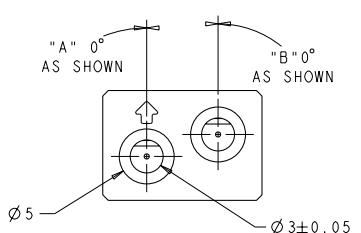
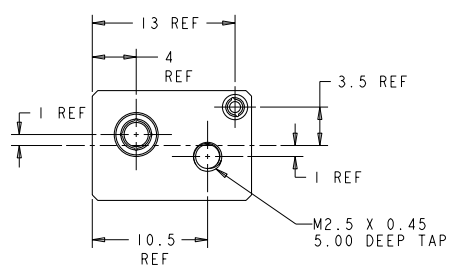
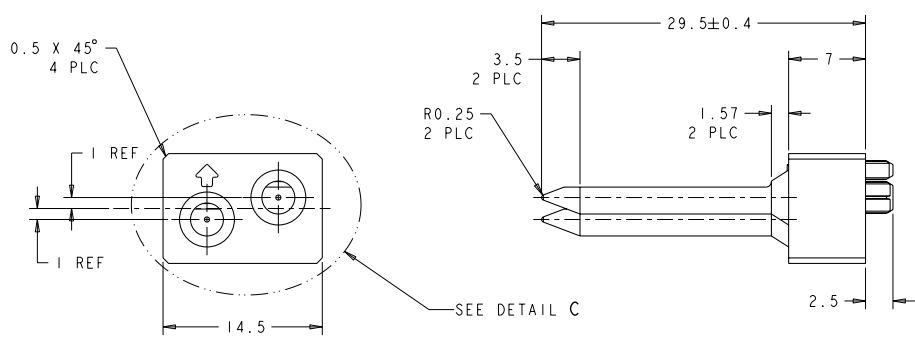
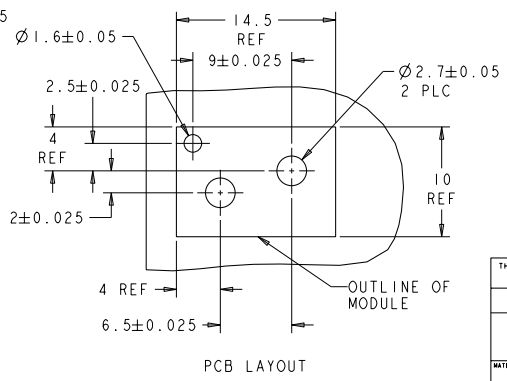


LOC	DISP	REV	DESCRIPTION	DATE	BY	APPD
AD	00					
		AI	REVISED PER ECO-11-005027	10MAY2011	AK	HMA



DETAIL C
SCALE 4:1
1-1469387-1 SHOWN



NOTES:
1. RECOMMENDED MOUNTING HARDWARE - M2.5 X 0.45 SCREW, 4.0MM LONG UP TO 2.9 MM THICK PCB, 6.0MM LONG FOR 3.0 TO 4.0 MM THICK PCB, 8.0MM FOR 4.1 TO 6.0MM THICK PCB, 10.0MM FOR 6.1 TO 8.0MM THICK PCB. (HARDWARE NOT SUPPLIED WITH PART NUMBER)

315°	225°	6-1469387-8
270°	90°	3-1469387-7
0°	0°	1-1469387-1
"B"	"A"	PART NUMBER

THIS DRAWING IS A CONTROLLED DOCUMENT. DWG NO. SZCZESNI 7DEC02
 CD R. PATTERSON 14SEP04
 R. PATTERSON 4SEP04
 R. PATTERSON 4SEP04

TE TE Connectivity

ATCA GUIDE MODULE (BACK PLANE - A1)

MATERIAL: ZAMAC 3 FINISH: NICKEL WEIGHT: CUSTOMER DRAWING

SIZE: A2 CASE CODE: 200779 DRAWING NO: 1469387 RESTRICTED TO: -

SCALE: 2:1 SHEET 1 OF 2 REV: A1

4

3

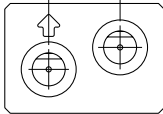
2

1

THIS DRAWING IS UNPUBLISHED. RELEASED FOR PUBLICATION. ALL RIGHTS RESERVED. COPYRIGHT 20

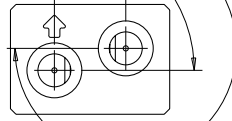
REV	DATE	BY	APPROV
-	-	-	-
SEE SHEET 1			

"A" 0° AS SHOWN "B" 0° AS SHOWN

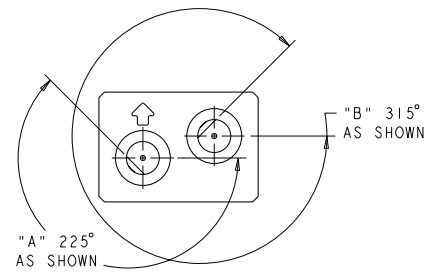


1-1469387-1

"A" 90° AS SHOWN "B" 270° AS SHOWN



3-1469387-7



6-1469387-8

THIS DRAWING IS A CONTROLLED DOCUMENT.		OWN: D. SZCZESNY 17DEC02	
DIMENSIONS: mm		CDR: R. PATTERSON 14SEP04	
TOLERANCES UNLESS OTHERWISE SPECIFIED:		APPD: R. PATTERSON 14SEP04	ATCA GUIDE MODULE (BACK PLANE - A1)
0 PLC ±0.2 1 PLC ±0.2 2 PLC ±0.13 3 PLC ±0.050 4 PLC ±0.0200 ANGLES ±0.5		NAME: R. PATTERSON	
MATERIAL: ZAMAC 3		FINISH: NICKEL	RESTRICTED TO: -
WEIGHT: CUSTOMER DRAWING		SCALE: 2:1	SHEET 2 OF 2
SIZE: A2		CASE CODE: 00779	DRAWING NO: 1469387