

4

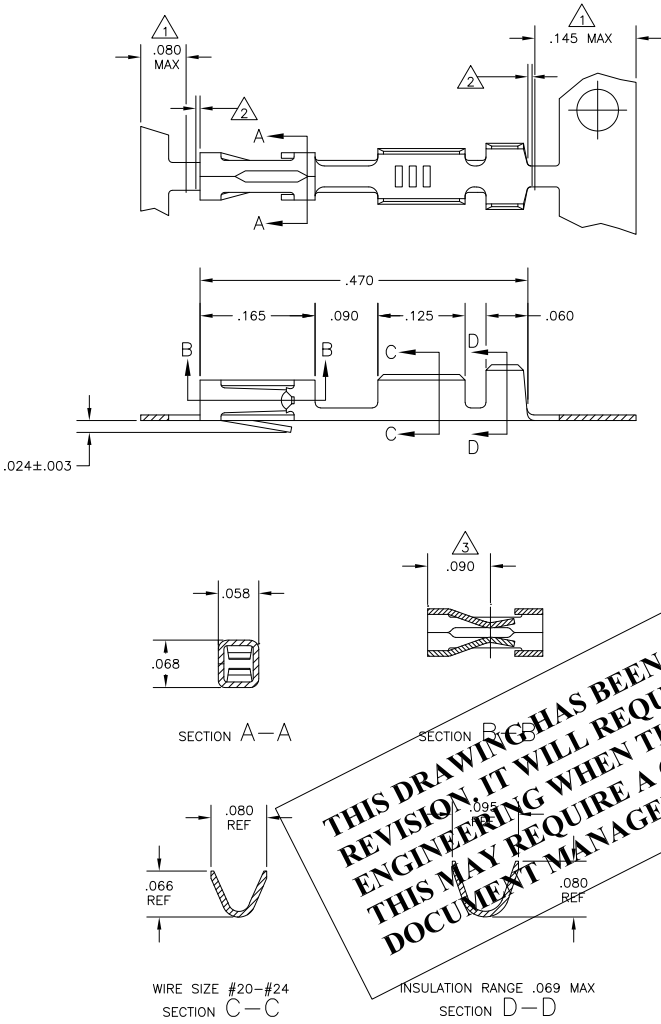
3

2

1

THIS DRAWING IS UNPUBLISHED. RELEASED FOR PUBLICATION. ALL RIGHTS RESERVED.

LOC	DIST	REVISIONS					
AD	00	P	LTR	DESCRIPTION	DATE	MIN	APD
		L1		REVISED PER ECO-11-004587	11MAR11	RK	HMR



- 1 PLATING IS NOT REQUIRED IN THIS AREA.
- 2 .006 MAX LOOSE PIECE CUT-OFF.
- 3 POINT OF MEASUREMENT FOR PLATING THICKNESS, INSIDE BEAMS
- 4 .000050-.000150 PREPLATED BRIGHT TIN.
- 5 .000030 GOLD IN CONTACT AREA, GOLD FLASH ON THE REMAINDER, ALL OVER .000050 NICKEL.
- 6 .000030 GOLD OVER .000050 NICKEL ENTIRE TERMINAL.
- 7 .000050 GOLD OVER .000050 NICKEL ENTIRE TERMINAL.
- 8 .000015 GOLD IN CONTACT AREA, GOLD FLASH ON THE REMAINDER, ALL OVER .000050 NICKEL.
- 9 SHEAR EDGES ARE PERMITTED TO BE UNPLATED.
- 10 .000015 GOLD IN CONTACT AREA, .000050 NICKEL ON ENTIRE TERMINAL.
- 11 OBSOLETE PART NUMBER.

THIS DRAWING HAS BEEN TRANSLATED AND REFLECTS THE PREVIOUS REVISION. IT WILL REQUIRE A COMPLETE DRAWING CHECK BY PRODUCT ENGINEERING WHEN THE NEXT ECO CHANGE IS WRITTEN - THIS MAY REQUIRE A CHANGE TO THE REVISION OF THE DOCUMENT MANAGER FOLDER AND THIS DRAWING.

2-87309-5	-OBSOLETE	2-87309-4
2- -3	-OBSOLETE	2- -1
2- 11 -0	1- 11 -8	9 10 1 11 -9
1- 11 -7	11 -6	8 1 -2
1- 11 -6	11 -5	7 1 11 -1
1- 11 -5	11 -4	6 1 11 -0
1- -4	-3	5 -9
1-87309-3	87309-2	87309-8
LOOSE PIECE PART NUMBER	STANDARD APPLICATOR PART NUMBER	MINI APPLICATOR PART NUMBER
	FINISH	

DIMENSIONS:		OTHER DIMENSIONS:		APPLICATOR SPEC:		SIZE		DATE		DRAWING NO		RESTRICTED TO	
INCHES		OTHER DIMENSIONS:		APPLICATOR SPEC:		A2		00779		C-87309		-	
MATERIAL		FINISH		WEIGHT		CUSTOMER DRAWING		SCALE		SHEET		REV	
PHOS. BRONZE .008 THICK		SEE TABLE		-		10:1		1 of 1		L1		-	