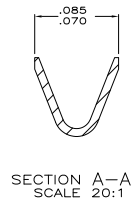
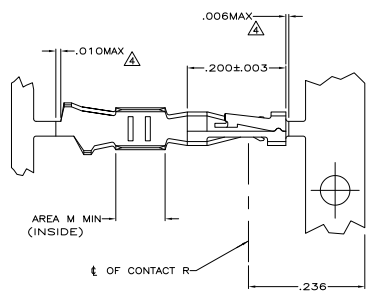
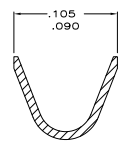
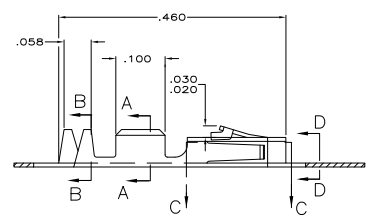


THIS DRAWING IS UNPUBLISHED  
 ALL RIGHTS RESERVED

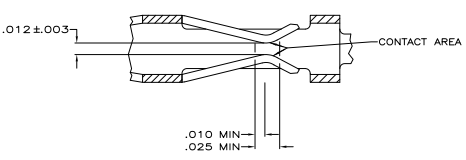
REV	DATE	DESCRIPTION	BY	CHK	APP
AD 39		REVISED PER ECO-11-004587			



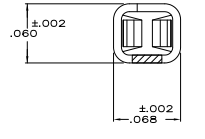
SECTION A-A  
SCALE 20:1



SECTION B-B  
INSULATION RANGE .025-.060  
SCALE 20:1



SECTION C-C  
SCALE 20:1



SECTION D-D  
SCALE 20:1

- △ .000100 MIN BRIGHT TIN-LEAD OVER .000050 MIN NICKEL ON ENTIRE CONTACT
- △ .000050 MIN NICKEL ON ENTIRE CONTACT; .000015 MIN GOLD ON CONTACT AREA; .000050 MIN BRIGHT TIN-LEAD ON AREA M.
- △ .000050 MIN NICKEL ON ENTIRE CONTACT; .000030 MIN GOLD ON CONTACT AREA; .000050 MIN BRIGHT TIN-LEAD ON AREA M.
- △ LOOSE PIECE CUT-OFF DIMENSION.
- △ .000100-.000200 TIN OVER .000050-.000100 NICKEL ON ENTIRE CONTACT.
- △ PREPLATED MATERIAL: (.000015 MIN GOLD ON CONTACT AREA, .000050-.000100 TIN ON AREA M, ALL OVER .000050-.000100 NICKEL ON ENTIRE CONTACT).
- △ PREPLATED MATERIAL: (.000030 MIN GOLD ON CONTACT AREA, .000050-.000100 TIN ON AREA M, ALL OVER .000050-.000100 NICKEL ON ENTIRE CONTACT).

LOOSE PIECE	REF	1-104479-3
LOOSE PIECE	△ REF	1-104479-2
LOOSE PIECE	△ REF	1-104479-1
STRIP	△	1-104479-0
STRIP	△	104479-9
STRIP	△	104479-8
LOOSE PIECE	△ REF	104479-7
LOOSE PIECE	△ REF	104479-6
LOOSE PIECE	△ REF	104479-5
STRIP	△	104479-4
STRIP	△	104479-3
STRIP	△	104479-2
REMARKS	FINISH	PART NO

THIS DRAWING IS A CONTROLLED DOCUMENT. DATE: 5-13-88

DESIGNED BY: J. HELM DATE: 5-13-88

REVISIONS: 108-1472

114-25038

DATE: 10-11

SIZE: 1" x 1"

SCALE: 1" = 1"

REVISIONS: 1

DATE: 10-11

BY: R1

TE Connectivity

CONTACT, CRIMP SNAP-IN

AMP/ODU SHORT POINT, 20-24 AWG

100779

104479