

4

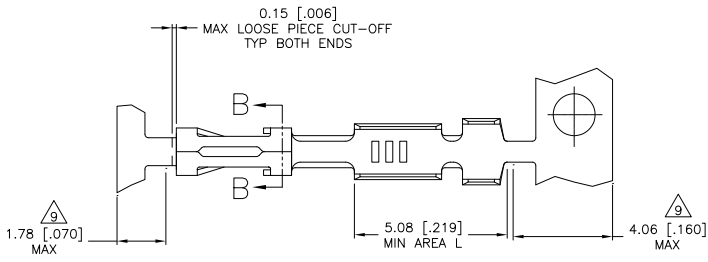
3

2

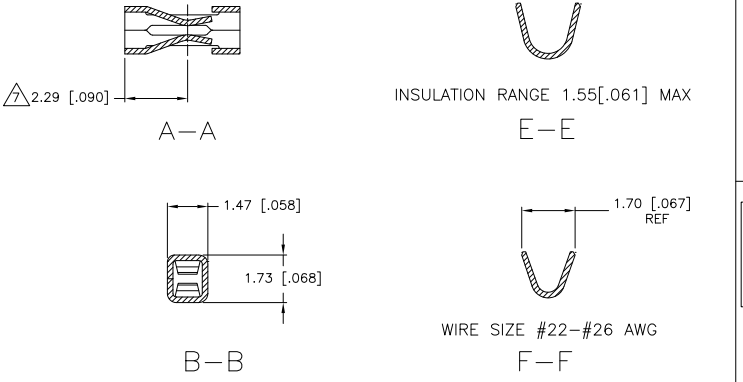
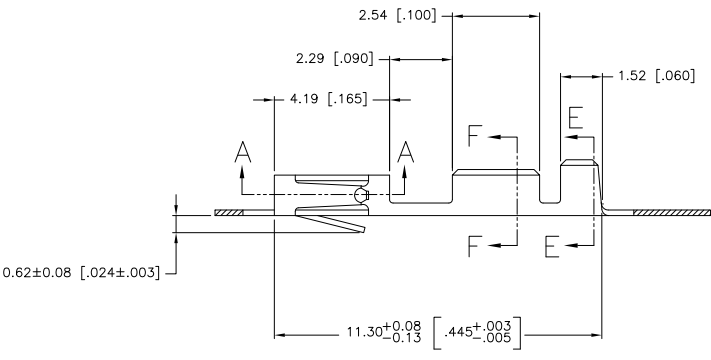
1

THIS DRAWING IS UNPUBLISHED. RELEASED FOR PUBLICATION. ALL RIGHTS RESERVED.

LOC	DIST	REVISIONS			
F	LNK	DESCRIPTION	DATE	BY	APPD
AD	00				
	K1	REVISED PER ECO-11-004820	11MAR11	RK	HMR



- 1 REELED PER MINI-APPLICATOR.
- 2 0.00076[.000030] GOLD ON CONTACT AREA, GOLD FLASH ON THE REMAINDER, OVER 0.00127[.000050] NICKEL.
- 3 0.00127[.000050]-0.00381[.000150] PREPLATED BRIGHT TIN.
- 4 0.00038[.000015] GOLD IN CONTACT AREA, 0.00254[.000100]-0.00508[.000200] BRIGHT TIN-LEAD IN AREA L, ALL OVER 0.00127[.000050] NICKEL.
- 5 0.00076[.000030] GOLD IN CONTACT AREA, 0.00254[.000100]-0.00508[.000200] BRIGHT TIN-LEAD IN AREA L, ALL OVER 0.00127[.000050] NICKEL.
- 6 SHEARED EDGES PERMITTED TO BE UNPLATED.
- 7 POINT OF MEASUREMENT FOR PLATING THICKNESS (INSIDE BEAMS).
- 8 0.00038[.000015] GOLD ON THE CONTACT AREA, GOLD FLASH ON THE REMAINDER, ALL OVER 0.00127[.000050] NICKEL.
- 9 GOLD LATING NOT REQUIRED IN THIS AREA.



	8	87809-6
OBSOLETE	5 6	87809-5
OBSOLETE	4 6	87809-4
	3	87809-2
	2	87809-1
	FINISH	PART NUMBER

THIS DRAWING IS A CONTROLLED DOCUMENT.

DM E. BRANDBERG 20FEB98	DR S. SHUEY 20FEB98	NAME S. SHUEY	TE Connectivity
DIMENSIONS mm [INCHES]	TOLERANCES UNLESS OTHERWISE SPECIFIED	PRODUCT SPEC 108-25019	CONTACT, FEMALE, MOD V, CRIMP SNAP-IN
0 PLC ± .005	1 PLC ± .005	APPLICATION SPEC 114-25003	SIZE A2
2 PLC ± .010	3 PLC ± .010	WEIGHT	CAGE CODE C-87809
4 PLC ± .010	5 PLC ± .010	FINISH AS NOTED	DRAWING NO C-87809
MATERIAL PHOS BRONZE 0.20[.008] THK	FINISH AS NOTED	CUSTOMER DRAWING	RESTRICTED TO K1
SCALE 10:1			SHEET 1 of 1