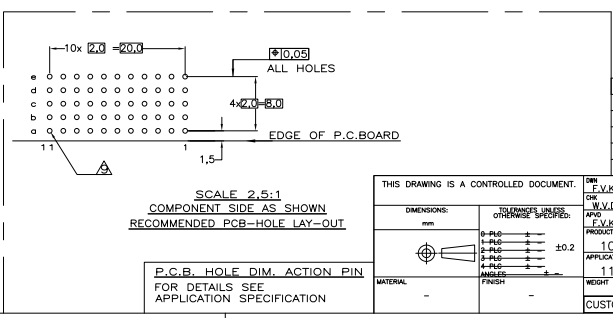


- NOTES:**
- ▲ MATERIAL CONTACT; PHOSPHORBRONZE  
MATERIAL HOUSING; GLASSFILLED POLYESTER (GRAY)  
UL-RATING 94V0.
  - ▲ GENERAL PLATING SPECIFICATION: UNDERPLATING (ENTIRE CONTACT): 1,27µm NICKEL MIN.  
AND ACTION PIN: 0,5µm TIN-LEAD MIN.  
FOR PLATING OF MATING SURFACES SEE APPLICABLE SPECIFICATION REFERENCE FOR EACH DASH NUMBER.
  - ▲ CONFORMS TO ALL TESTING ACCORDING IEC 61076-4-101 PERFORMANCE LEVEL 2.
  - ▲ CONFORMS TO ALL TESTING ACCORDING IEC 61076-4-101 PERFORMANCE LEVEL 1.
  - ▲ CONNECTOR TESTED AND QUALIFIED AGAINST TELCORDIA GR-1217-CORE QUALITY LEVEL III, CENTRAL OFFICE APPLICATIONS.
  - ▲ CONNECTOR TESTED AND QUALIFIED AGAINST TELCORDIA GR-1217-CORE QUALITY LEVEL III, UNCONTROLLED ENVIRONMENT APPLICATIONS.
  - ▲ CONNECTOR LUBRICATED WITH TELCORDIA GR-1217-CORE APPROVED LUBRICANT.
  - ▲ CONNECTOR PRINTED WITH PARTNUMBER AND DATECODE  
THE MARKING CAN APPEAR ON THE FRONT SIDE OR ON THE BACK SIDE.
  - ▲ PLATED-THROUGH HOLES AT 2x2mm SQUARE GRID, 55 HOLES
  - 10 FITS WITH INTEGRATED GROUND RETURN UPPERSHIELD, BASIC P.N. 352111 AND INTEGRATED GROUND RETURN LOWERSHIELD, BASIC P.N. 352112
  - ▲ CONNECTOR ASSEMBLED WITH REDESIGNED CONTACTS.  
CONTACTS HAVE A CORING-OUT IN THE PLASTIC.
  - ▲ 0.76µm MIN GOLD PLATING AT MATING SURFACES.



FINISH	MATERIAL	PART NUMBER
▲▲▲	▲	3-100161-0
▲▲▲	▲	1-100161-9
▲▲▲	▲	100161-9
▲▲▲	▲	100161-4
▲▲▲	▲	100161-1

THIS DRAWING IS A CONTROLLED DOCUMENT.		DRW: E.V.KONINGSBRUGGE	DATE: 20JAN97
DIMENSIONS: mm		CHK: W.V.D.HELDEN	DATE: 20JAN97
TOLERANCES UNLESS OTHERWISE SPECIFIED:		NAME: E.V.KONINGSBRUGGE	
0-PHØ	±0.2	PRODUCT SPEC: 108-19082	
1-PHØ	±0.2	APPLICATION SPEC: 114-19029	
2-PHØ	±0.2	WEIGHT: -	
3-PHØ	±0.2	MATERIAL: -	
4-PHØ	±0.2	FINISH: -	
MATERIAL:	-	CUSTOMER DRAWING	
FINISH:	-	SCALE: NTS	
SIZE: A2		CAGE CODE: 00779	DRAWING NO: 100161
RESTRICTED TO: -		SHEET: 1 of 1	
REV: P		SCALE: NTS	