

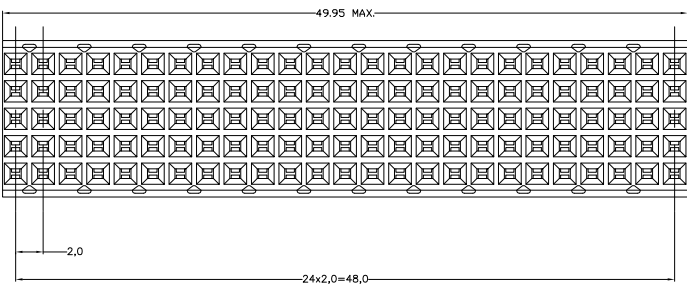
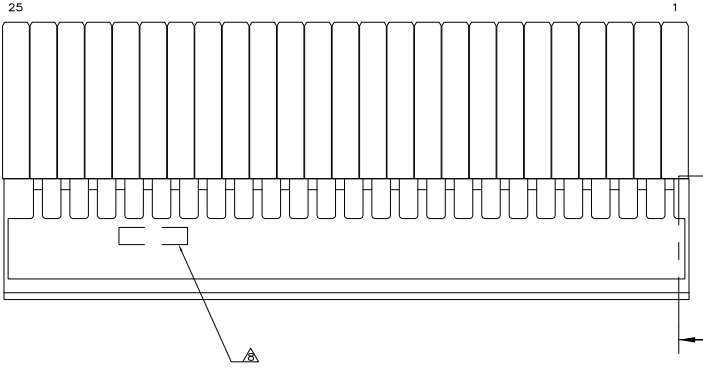
4

3

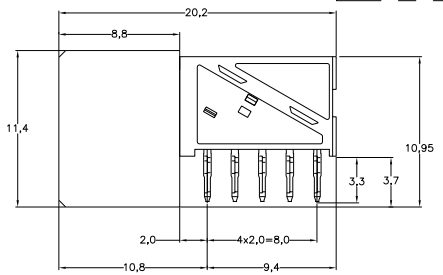
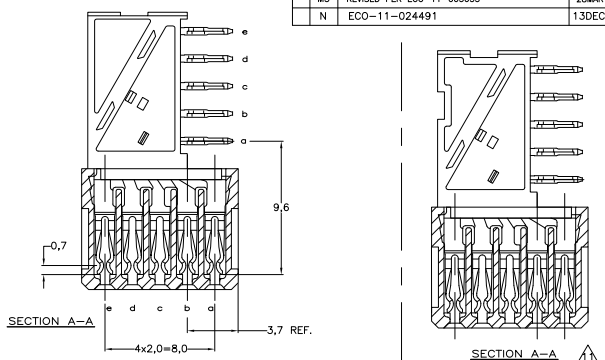
2

1

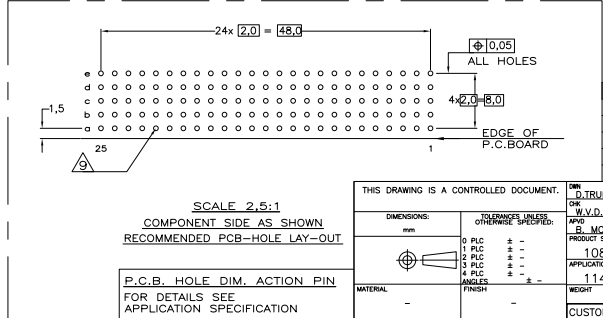
THIS DRAWING IS UNPUBLISHED. RELEASED FOR PUBLICATION. ALL RIGHTS RESERVED.



REV	DATE	BY	APPD
M3	28MAR11	RK	HMR
N	13DEC11	SY	MGW



- NOTES:**
- ▲ MATERIAL CONTACT: PHOSPHORBRONZE
MATERIAL HOUSING: GLASSFILLED POLYESTER (GRAY)
UL-RATING 94V0.
 - ▲ GENERAL PLATING SPECIFICATION: UNDERPLATING (ENTIRE CONTACT): 1,27µm NICKEL MIN.
AND ACTION PIN: 0,5µm TIN-LEAD MIN.
FOR PLATING OF MATING SURFACES SEE APPLICABLE SPECIFICATION REFERENCE FOR EACH DASH NUMBER.
 - ▲ CONFORMS TO ALL TESTING ACCORDING IEC 61076-4-101 PERFORMANCE LEVEL 2.
 - ▲ CONFORMS TO ALL TESTING ACCORDING IEC 61076-4-101 PERFORMANCE LEVEL 1.
 - ▲ CONNECTOR TESTED AND QUALIFIED AGAINST TELCORDIA GR-1217-CORE QUALITY LEVEL III, CENTRAL OFFICE APPLICATIONS.
 - ▲ CONNECTOR TESTED AND QUALIFIED AGAINST TELCORDIA GR-1217-CORE QUALITY LEVEL III, UNCONTROLLED ENVIRONMENT APPLICATIONS.
 - ▲ CONNECTOR LUBRICATED WITH TELCORDIA GR-1217-CORE APPROVED LUBRICANT.
 - ▲ CONNECTOR PRINTED WITH PARTNUMBER AND DATECODE
THE MARKING CAN APPEAR ON THE FRONT SIDE OR ON THE BACK SIDE.
PLATED-THROUGH HOLES AT 2x2mm SQUARE GRID, 125 HOLES
 - 10. FITS WITH INTEGRATED GROUND RETURN UPPERSHIELD, BASIC P.N. 338109
AND INTEGRATED GROUND RETURN LOWERSHIELD, BASIC P.N. 338110
 - ▲ CONNECTOR ASSEMBLED WITH REDESIGNED CONTACTS.
CONTACTS HAVE A CORING-OUT IN THE PLASTIC.
 - ▲ 0.76µm MIN GOLD PLATING AT MATING SURFACES.



FINISH	MATERIAL	PARTNUMBER
▲▲▲	▲	3-100145-0 ▲▲
▲▲▲	▲	1-100145-9 ▲▲
▲▲▲	▲	100145-9 ▲▲
▲▲▲	▲	100145-4 ▲▲
▲▲▲	▲	100145-1 ▲▲

THIS DRAWING IS A CONTROLLED DOCUMENT.

DR: D. TRUBEN 20JAN07
 CW: W.V.D. HENDEN 20JAN07
 P/P: B. MODJ
 PRODUCT SPEC: 108-19082
 APPLICATION SPEC: 114-19029
 RIGHT: -

MATERIAL: -
 FINISH: -

TE Connectivity
 Z-PACK 2mm HM TYPE B
 125 POS. FEMALE CONNECTOR

SIZE: A2
 CASE CODE: 00779
 DRAWING NO: C=100145

CUSTOMER DRAWING

RESTRICTED TO: -
 SCALE: NTS
 SHEET: 1 of 1
 REV: N