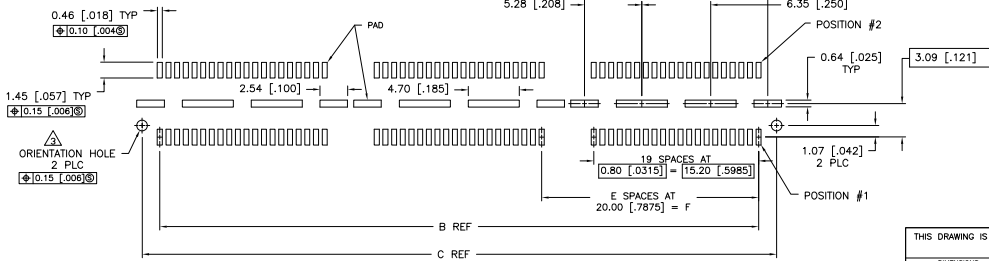
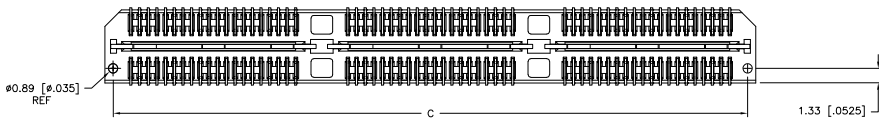
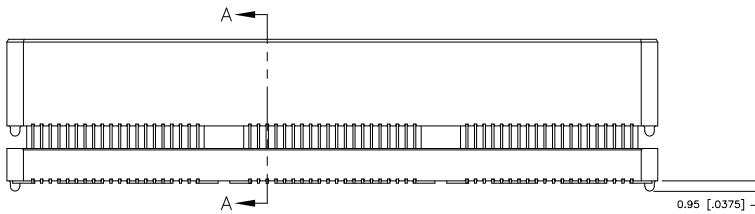
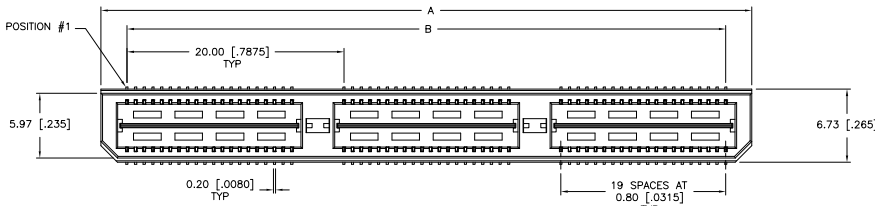


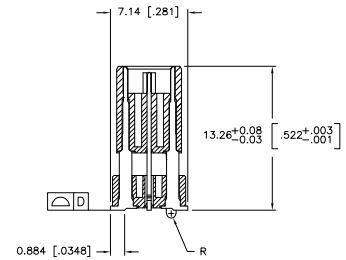
THIS DRAWING IS UNPUBLISHED. RELEASED FOR PUBLICATION.
 © COPYRIGHT BY TYCO ELECTRONICS CORPORATION. ALL RIGHTS RESERVED.

LOC		DIBT		REVISIONS		
AD	00	F	LTR	DESCRIPTION	DATE	BY
		G		REVISED PER EC 0512-0273-05	19SEP05	JDP/DD

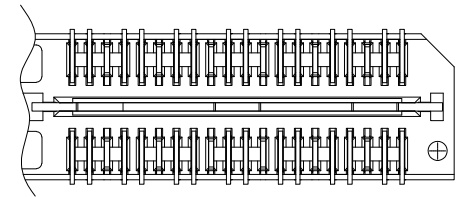


RECOMMENDED PC BOARD LAYOUT
 (VIEWED FROM CONNECTOR SIDE)

- ⚠ HOUSING: LCP, BLACK.
CONTACT & GROUND PLANE: PHOS BRONZE.
- ⚠ CONTACT PLATING: SELECT GOLD FLASH.
- ⚠ FOR STANDARD APPLICATIONS, ORIENTATION HOLE TO BE Ø1.02 [Ø.0400].



SECTION A-A



THIS DRAWING IS A CONTROLLED DOCUMENT.		DRW V. FURLER 30SEP03	Tyco Electronics Corporation
DIMENSIONS: mm [INCHES]		CHK D. DIXON 30SEP03	Harrisburg, PA 17105-3608
TOLERANCES UNLESS OTHERWISE SPECIFIED:		APP'D D. DIXON 30SEP03	NAME
0 PLC ± .1	1 PLC ± 0.3(0.1)	PRODUCT SPEC	HEADER ASSEMBLY, 14.0MM [.551] VERTICAL, 0.80MM CL, MICTOR SB
2 PLC ± 0.15(0.005)	3 PLC ± 0.05(0.0025)	APPLICATION SPEC	RESTRICTED TO
4 PLC ± .1	5 PL ± .1	WEIGHT	SIZE CASE CODE DRAWING NO
ANGLE FINISH			A2 00779 C-16584.38
			SCALE 4:1 SHEET 1 of 2 REV G
MATERIAL		CUSTOMER DRAWING	

4

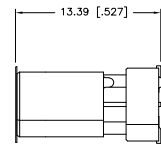
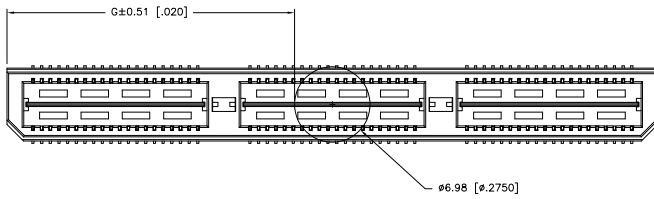
3

2

1

THIS DRAWING IS UNPUBLISHED. RELEASED FOR PUBLICATION
 © COPYRIGHT BY TYCO ELECTRONICS CORPORATION. ALL RIGHTS RESERVED.

LOC	DIST	REVISIONS					
AD	00	P	L/R	DESCRIPTION	DATE	BY	APP
				SEE SHEET 1			



26.52(1.044)	40.00(1.575)	2	0.102(0040)	58.50(2.303)	55.20(2.173)	60.00(2.362)	YES	POCKET TAPE	YES	84	7-1658438-3
16.51(650)	20.00(7874)	1	0.102(0040)	38.48(1.515)	35.20(1.386)	40.00(1.575)	YES	POCKET TAPE	YES	56	7-1658438-2
6.50(256)	0(000)	0	0.102(0040)	18.49(728)	15.20(598)	20.00(787)	YES	POCKET TAPE	YES	28	7-1658438-1
26.52(1.044)	40.00(1.575)	2	0.102(0040)	58.50(2.303)	55.20(2.173)	60.00(2.362)	YES	POCKET TAPE	NO	120	6-1658438-3
16.51(650)	20.00(7874)	1	0.102(0040)	38.48(1.515)	35.20(1.386)	40.00(1.575)	YES	POCKET TAPE	NO	80	6-1658438-2
6.50(256)	0(000)	0	0.102(0040)	18.49(728)	15.20(598)	20.00(787)	YES	POCKET TAPE	NO	40	6-1658438-1
-	40.00(1.575)	2	0.102(0040)	58.50(2.303)	55.20(2.173)	60.00(2.362)	NO	POCKET TAPE	YES	84	5-1658438-3
-	20.00(7874)	1	0.102(0040)	38.48(1.515)	35.20(1.386)	40.00(1.575)	NO	POCKET TAPE	YES	56	5-1658438-2
-	0(000)	0	0.102(0040)	18.49(728)	15.20(598)	20.00(787)	NO	POCKET TAPE	YES	28	5-1658438-1
-	40.00(1.575)	2	0.102(0040)	58.50(2.303)	55.20(2.173)	60.00(2.362)	NO	POCKET TAPE	NO	120	4-1658438-3
-	20.00(7874)	1	0.102(0040)	38.48(1.515)	35.20(1.386)	40.00(1.575)	NO	POCKET TAPE	NO	80	4-1658438-2
-	0(000)	0	0.102(0040)	18.49(728)	15.20(598)	20.00(787)	NO	POCKET TAPE	NO	40	4-1658438-1
46.51(1.831)	80.00(3.150)	4	0.152(0060)	98.50(3.748)	95.20(3.748)	100.00(3.937)	YES	TRAY	YES	140	3-1658438-5
36.53(1.438)	60.00(2.362)	3	0.152(0060)	78.49(3.090)	75.20(2.961)	80.00(3.150)	YES	TRAY	YES	112	3-1658438-4
26.52(1.044)	40.00(1.575)	2	0.102(0040)	58.50(2.303)	55.20(2.173)	60.00(2.362)	YES	TRAY	YES	84	3-1658438-3
16.51(650)	20.00(7874)	1	0.102(0040)	38.48(1.515)	35.20(1.386)	40.00(1.575)	YES	TRAY	YES	56	3-1658438-2
6.50(256)	0(000)	0	0.102(0040)	18.49(728)	15.20(598)	20.00(787)	YES	TRAY	YES	28	3-1658438-1
46.51(1.831)	80.00(3.150)	4	0.152(0060)	98.50(3.748)	95.20(3.748)	100.00(3.937)	YES	TRAY	NO	200	2-1658438-5
36.53(1.438)	60.00(2.362)	3	0.152(0060)	78.49(3.090)	75.20(2.961)	80.00(3.150)	YES	TRAY	NO	160	2-1658438-4
26.52(1.044)	40.00(1.575)	2	0.102(0040)	58.50(2.303)	55.20(2.173)	60.00(2.362)	YES	TRAY	NO	120	2-1658438-3
16.51(650)	20.00(7874)	1	0.102(0040)	38.48(1.515)	35.20(1.386)	40.00(1.575)	YES	TRAY	NO	80	2-1658438-2
6.50(256)	0(000)	0	0.102(0040)	18.49(728)	15.20(598)	20.00(787)	YES	TRAY	NO	40	2-1658438-1
-	80.00(3.150)	4	0.152(0060)	98.50(3.748)	95.20(3.748)	100.00(3.937)	NO	TRAY	YES	140	1-1658438-5
-	60.00(2.362)	3	0.152(0060)	78.49(3.090)	75.20(2.961)	80.00(3.150)	NO	TRAY	YES	112	1-1658438-4
-	40.00(1.575)	2	0.102(0040)	58.50(2.303)	55.20(2.173)	60.00(2.362)	NO	TRAY	YES	84	1-1658438-3
-	20.00(7874)	1	0.102(0040)	38.48(1.515)	35.20(1.386)	40.00(1.575)	NO	TRAY	YES	56	1-1658438-2
-	0(000)	0	0.102(0040)	18.49(728)	15.20(598)	20.00(787)	NO	TRAY	YES	28	1-1658438-1
-	80.00(3.150)	4	0.152(0060)	98.50(3.748)	95.20(3.748)	100.00(3.937)	NO	TRAY	NO	200	1658438-5
-	60.00(2.362)	3	0.152(0060)	78.49(3.090)	75.20(2.961)	80.00(3.150)	NO	TRAY	NO	160	1658438-4
-	40.00(1.575)	2	0.102(0040)	58.50(2.303)	55.20(2.173)	60.00(2.362)	NO	TRAY	NO	120	1658438-3
-	20.00(7874)	1	0.102(0040)	38.48(1.515)	35.20(1.386)	40.00(1.575)	NO	TRAY	NO	80	1658438-2
-	0(000)	0	0.102(0040)	18.49(728)	15.20(598)	20.00(787)	NO	TRAY	NO	40	1658438-1
G	F	E	D	C	B	A		POLYIMIDE	PACKAGING	NO OF	
								FILM PAD	PAIR	DIFF	
										NO OF	
										PAIR	
										POS	
										NUMBER	

THIS DRAWING IS A CONTROLLED DOCUMENT. **DW** V. FURLER 3052P03
CHK D. DIXON 3052P03
APP'D D. DIXON 3052P03
PRODUCT SPEC Tyco Electronics Corporation
APPLICATION SPEC Harrisburg, PA 17105-3608

DIMENSIONS: mm [INCHES]
 TO TOLERANCES UNLESS OTHERWISE SPECIFIED
 0 P/LC ± .010
 1 P/LC ± 0.3(01)
 2 P/LC ± 0.15(005)
 3 P/LC ± 0.08(0025)
 4 P/LC ± 0.05(0015)
 ANGLES ± .5°
 FINISH

MATERIAL: SEE SHEET 1

SIZE: A2 **DATE:** 00779 **SCALE:** 4:1 **DRAWING NO:** C-1658438 **RESTRICTED TO:** —

CUSTOMER DRAWING **SCALE:** 4:1 **SHEET:** 2 of 2 **REV:** G

1658438

A

G