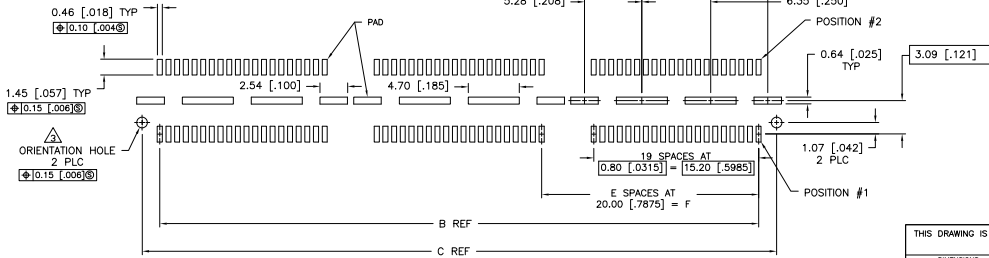
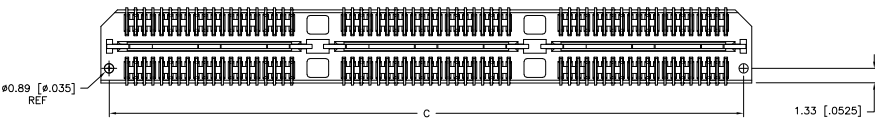
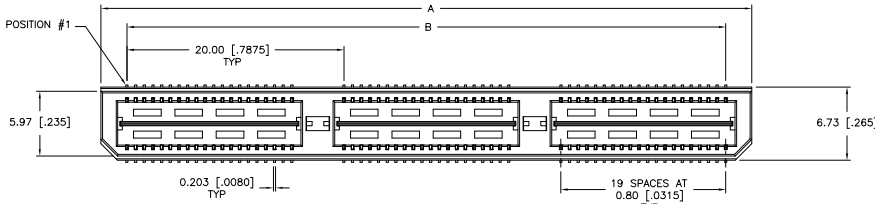


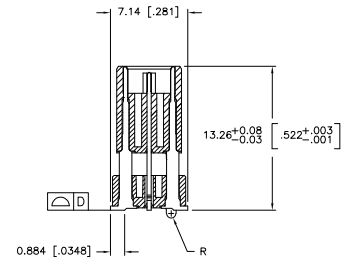
THIS DRAWING IS UNPUBLISHED. RELEASED FOR PUBLICATION. ALL RIGHTS RESERVED.
 © COPYRIGHT BY TYCO ELECTRONICS CORPORATION.

LOC	DIST	REVISIONS		
AD	00	F LTR	DESCRIPTION	DATE
		G	REVISED PER EC 0512-0273-05	19SEP05 JDP DD

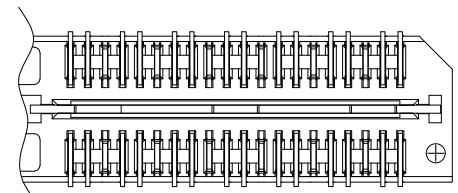


RECOMMENDED PC BOARD LAYOUT
 (VIEWED FROM CONNECTOR SIDE)

- 1 HOUSING: LCP, BLACK.
CONTACT & GROUND PLANE: PHOS BRONZE.
- 2 CONTACT PLATING: SELECT 0.25 MICROMETERS (.000010 IN) MIN GOLD.
- 3 FOR STANDARD APPLICATIONS, ORIENTATION HOLE TO BE Ø1.02 [Ø.0400].



SECTION A-A



DIFFERENTIAL PAIR LOADING
 (BOTTOM VIEW)
 SCALE 2:1

THIS DRAWING IS A CONTROLLED DOCUMENT.		DW: V_FURLER 29SEP03 CHK: DIXON 29SEP03 D: DIXON 29SEP03 APP'D: DIXON 29SEP03 PRODUCT SPEC: --- APPLICATION SPEC: --- WEIGHT: --- FINISH: ---	Tyco Electronics Tyco Electronics Corporation Harrisburg, PA 17105-3608
DIMENSIONS: mm [INCHES] 0 PLC ± .1 1 PLC ± 0.3(0.1) 2 PLC ± 0.15(0.005) 3 PLC ± 0.08(0.0025) 4 PLC ± .1 ANGLES ± .5° FINISH	TO MANUFACTURER: TO ASSEMBLER:	NAME: --- HEADER ASSEMBLY, 14.0MM [.551] VERTICAL, 0.80MM CL, MICTOR SB	RESTRICTED TO: --- SCALE: 3:1 SHEET: 1 of 2 REV: G
MATERIAL: 1		SIZE: A2 CASE CODE: 00779 DRAWING NO: 1658437 CUSTOMER DRAWING	

4

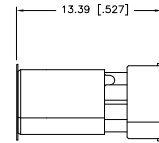
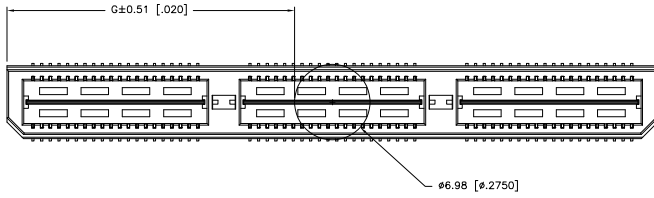
3

2

1

THIS DRAWING IS UNPUBLISHED. RELEASED FOR PUBLICATION
 © COPYRIGHT BY TYCO ELECTRONICS CORPORATION. ALL RIGHTS RESERVED.

LOC	AD	DIST	REVISIONS				
			P	LR	DATE	DWN	APP
			--	SEE SHEET 1	--	--	--



26.52(1.044)	40.00(1.575)	2	0.102(0.040)	58.50(2.303)	55.20(2.173)	60.00(2.362)	YES	POCKET TAPE	YES	84	7-1658437-3	
16.51(650)	20.00(787.4)	1	0.102(0.040)	38.48(1.515)	35.20(1.386)	40.00(1.575)	YES	POCKET TAPE	YES	56	7-1658437-2	
6.50(256)	0(0.000)	0	0.102(0.040)	18.49(728)	15.20(596)	20.00(787)	YES	POCKET TAPE	YES	28	7-1658437-1	
26.52(1.044)	40.00(1.575)	2	0.102(0.040)	58.50(2.303)	55.20(2.173)	60.00(2.362)	YES	POCKET TAPE	NO	120	6-1658437-2	
16.51(650)	20.00(787.4)	1	0.102(0.040)	38.48(1.515)	35.20(1.386)	40.00(1.575)	YES	POCKET TAPE	NO	80	6-1658437-2	
6.50(256)	0(0.000)	0	0.102(0.040)	18.49(728)	15.20(596)	20.00(787)	YES	POCKET TAPE	NO	40	6-1658437-1	
-	40.00(1.575)	2	0.102(0.040)	58.50(2.303)	55.20(2.173)	60.00(2.362)	NO	POCKET TAPE	YES	84	5-1658437-3	
-	20.00(787.4)	1	0.102(0.040)	38.48(1.515)	35.20(1.386)	40.00(1.575)	NO	POCKET TAPE	YES	56	5-1658437-2	
-	0(0.000)	0	0.102(0.040)	18.49(728)	15.20(596)	20.00(787)	NO	POCKET TAPE	YES	28	5-1658437-1	
-	40.00(1.575)	2	0.102(0.040)	58.50(2.303)	55.20(2.173)	60.00(2.362)	NO	POCKET TAPE	NO	120	4-1658437-3	
-	20.00(787.4)	1	0.102(0.040)	38.48(1.515)	35.20(1.386)	40.00(1.575)	NO	POCKET TAPE	NO	80	4-1658437-2	
-	0(0.000)	0	0.102(0.040)	18.49(728)	15.20(596)	20.00(787)	NO	POCKET TAPE	NO	40	4-1658437-1	
46.51(1.831)	80.00(3.150)	4	0.152(0.060)	98.50(3.748)	95.20(3.748)	100.00(3.937)	YES	TRAY	YES	140	3-1658437-6	
36.53(1.437)	60.00(2.362)	3	0.152(0.060)	78.49(3.090)	75.20(2.961)	80.00(3.150)	YES	TRAY	YES	112	3-1658437-4	
26.52(1.044)	40.00(1.575)	2	0.102(0.040)	58.50(2.303)	55.20(2.173)	60.00(2.362)	YES	TRAY	YES	84	3-1658437-3	
16.51(650)	20.00(787.4)	1	0.102(0.040)	38.48(1.515)	35.20(1.386)	40.00(1.575)	YES	TRAY	YES	56	3-1658437-2	
6.50(256)	0(0.000)	0	0.102(0.040)	18.49(728)	15.20(596)	20.00(787)	YES	TRAY	YES	28	3-1658437-1	
46.51(1.831)	80.00(3.150)	4	0.152(0.060)	98.50(3.748)	95.20(3.748)	100.00(3.937)	YES	TRAY	NO	200	2-1658437-6	
36.53(1.437)	60.00(2.362)	3	0.152(0.060)	78.49(3.090)	75.20(2.961)	80.00(3.150)	YES	TRAY	NO	160	2-1658437-4	
26.52(1.044)	40.00(1.575)	2	0.102(0.040)	58.50(2.303)	55.20(2.173)	60.00(2.362)	YES	TRAY	NO	120	2-1658437-3	
16.51(650)	20.00(787.4)	1	0.102(0.040)	38.48(1.515)	35.20(1.386)	40.00(1.575)	YES	TRAY	NO	80	2-1658437-2	
6.50(256)	0(0.000)	0	0.102(0.040)	18.49(728)	15.20(596)	20.00(787)	YES	TRAY	NO	40	2-1658437-1	
-	80.00(3.150)	4	0.152(0.060)	98.50(3.748)	95.20(3.748)	100.00(3.937)	NO	TRAY	YES	140	1-1658437-6	
-	60.00(2.362)	3	0.152(0.060)	78.49(3.090)	75.20(2.961)	80.00(3.150)	NO	TRAY	YES	112	1-1658437-4	
-	40.00(1.575)	2	0.102(0.040)	58.50(2.303)	55.20(2.173)	60.00(2.362)	NO	TRAY	YES	84	1-1658437-3	
-	20.00(787.4)	1	0.102(0.040)	38.48(1.515)	35.20(1.386)	40.00(1.575)	NO	TRAY	YES	56	1-1658437-2	
-	0(0.000)	0	0.102(0.040)	18.49(728)	15.20(596)	20.00(787)	NO	TRAY	YES	28	1-1658437-1	
-	80.00(3.150)	4	0.152(0.060)	98.50(3.748)	95.20(3.748)	100.00(3.937)	NO	TRAY	NO	200	1658437-6	
-	60.00(2.362)	3	0.152(0.060)	78.49(3.090)	75.20(2.961)	80.00(3.150)	NO	TRAY	NO	160	1658437-4	
-	40.00(1.575)	2	0.102(0.040)	58.50(2.303)	55.20(2.173)	60.00(2.362)	NO	TRAY	NO	120	1658437-3	
-	20.00(787.4)	1	0.102(0.040)	38.48(1.515)	35.20(1.386)	40.00(1.575)	NO	TRAY	NO	80	1658437-2	
-	0(0.000)	0	0.102(0.040)	18.49(728)	15.20(596)	20.00(787)	NO	TRAY	NO	40	1658437-1	
G	F	E	D	C	B	A		POLYIMIDE	PACKAGING	DIFF.	NO OF	PART
								FILM PAD	PAIR	POS		NUMBER

THIS DRAWING IS A CONTROLLED DOCUMENT. DWN V. FURLER 2952P03

CHK D. DIXON 2952P03

APP D. DIXON 2952P03

PROJECT SPEC: --

APPLICATION SPEC: --

WEIGHT: --

CUSTOMER DRAWING

TYCO Electronics Corporation
Harrisburg, PA 17105-3608

HEADER ASSEMBLY, 14.0MM [.551] VERTICAL,
0.80MM CL,
MICTOR SB

SIZE: A2 CASE CODE: 00779 DRAWING NO: 1658437 RESTRICTED TO: --

SCALE: 3:1 SHEET: 2 of 2 REV: G