

4

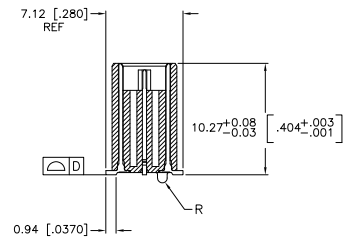
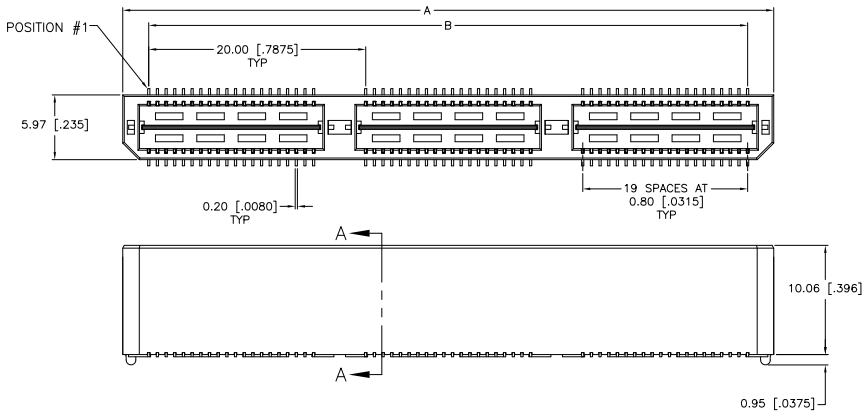
3

2

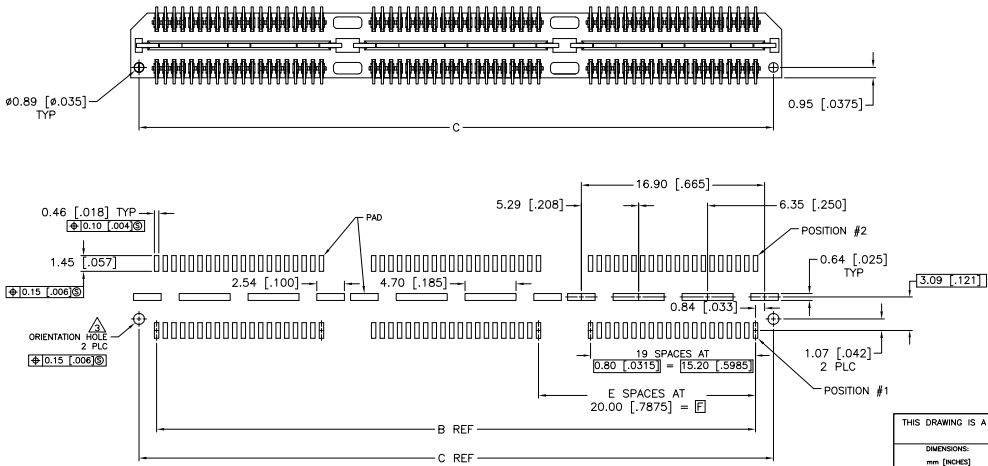
1

THIS DRAWING IS UNPUBLISHED. RELEASED FOR PUBLICATION. BY TYCO ELECTRONICS CORPORATION. ALL RIGHTS RESERVED.

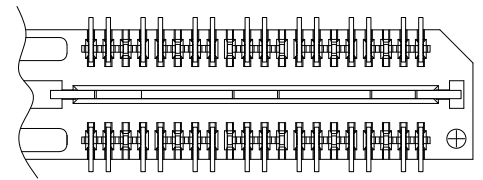
LOC		DIBT		REVISIONS			
F	LR	DATE	BY	APPD	DESCRIPTION		
G1		25NOV08	DH	DD	REVISED PER ECO-08-027850		



SECTION A-A



RECOMMENDED PC BOARD LAYOUT (VIEWED FROM CONNECTOR SIDE)



DIFFERENTIAL PAIR LOADING (BOTTOM VIEW) SCALE 2:1

THIS DRAWING IS A CONTROLLED DOCUMENT.		DRW: B. CARBO 23MAY03	Tyco Electronics Corporation Harrisburg, PA 17105-3608
DIMENSIONS: mm [INCHES]		CHK: D. DIXON 23MAY03	
TOLERANCES UNLESS OTHERWISE SPECIFIED:		NAME: D. DIXON	HEADER ASSEMBLY, 11.0MM [.433] VERTICAL, 0.80MM CL, MICTOR SB
0 PLC ± .1		PRODUCT SPEC: —	
1 PLC ± 0.3(0.1)		APPLICATION SPEC: —	SIZE: A2
2 PLC ± 0.15(0.05)		WEIGHT: —	CAGE CODE: 00779
3 PLC ± 0.05(0.020)		RESTRICTED TO: —	DRAWING NO: 1658046
4 PLC ± .1		CUSTOMER DRAWING	SCALE: 3:1
ANGLES: ± .5°			SHEET: 1 of 2
FINISH: —			REV: G1

AMP 1471-9 REV 31MAR2000

1658046

A

4

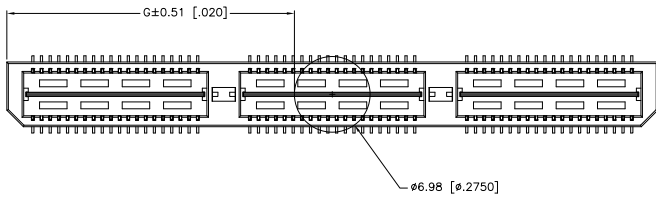
3

2

1

THIS DRAWING IS UNPUBLISHED. RELEASED FOR PUBLICATION  
 © COPYRIGHT BY TYCO ELECTRONICS CORPORATION. ALL RIGHTS RESERVED.

LOC	REV	DATE	BY	APP	DESCRIPTION
AD	00				
					SEE SHEET 1



QTY	DESCRIPTION	UNIT	PRICE	TOTAL	DATE	BY	APP	REVISIONS
28 52(1.044)	40 00(1.575)	2	0.102(0.040)	58 50(2.303)	55 20(2.173)	60 00(2.362)	YES	POCKET TAPE YES 84 7-1658046-3
18 51(650)	20 00(7874)	1	0.102(0.040)	38 48(1.515)	35 20(1.386)	40 00(1.575)	YES	POCKET TAPE YES 58 7-1658046-2
6 50(256)	0 00(000)	0	0.102(0.040)	18 49(728)	15 20(598)	20 00(787)	YES	POCKET TAPE YES 28 7-1658046-1
28 52(1.044)	40 00(1.575)	2	0.102(0.040)	58 50(2.303)	55 20(2.173)	60 00(2.362)	YES	POCKET TAPE NO 120 6-1658046-3
18 51(650)	20 00(7874)	1	0.102(0.040)	38 48(1.515)	35 20(1.386)	40 00(1.575)	YES	POCKET TAPE NO 80 6-1658046-2
6 50(256)	0 00(000)	0	0.102(0.040)	18 49(728)	15 20(598)	20 00(787)	YES	POCKET TAPE NO 40 6-1658046-1
40 00(1.575)	2	0.102(0.040)	58 50(2.303)	55 20(2.173)	60 00(2.362)	NO	POCKET TAPE YES 84 5-1658046-3	
20 00(7874)	1	0.102(0.040)	38 48(1.515)	35 20(1.386)	40 00(1.575)	NO	POCKET TAPE YES 58 5-1658046-2	
0 00(000)	0	0.102(0.040)	18 49(728)	15 20(598)	20 00(787)	NO	POCKET TAPE YES 28 5-1658046-1	
40 00(1.575)	2	0.102(0.040)	58 50(2.303)	55 20(2.173)	60 00(2.362)	NO	POCKET TAPE NO 120 4-1658046-3	
20 00(7874)	1	0.102(0.040)	38 48(1.515)	35 20(1.386)	40 00(1.575)	NO	POCKET TAPE NO 80 4-1658046-2	
0 00(000)	0	0.102(0.040)	18 49(728)	15 20(598)	20 00(787)	NO	POCKET TAPE NO 40 4-1658046-1	
48 51(1.831)	80 00(3.150)	4	0.152(0.060)	88 50(3.748)	85 20(3.748)	100 00(3.937)	YES	TRAY YES 140 3-1658046-5
38 53(1.438)	60 00(2.362)	3	0.152(0.060)	78 48(3.090)	75 20(2.961)	80 00(3.150)	YES	TRAY YES 112 3-1658046-4
28 52(1.044)	40 00(1.575)	2	0.102(0.040)	58 50(2.303)	55 20(2.173)	60 00(2.362)	YES	TRAY YES 84 3-1658046-3
18 51(650)	20 00(7874)	1	0.102(0.040)	38 48(1.515)	35 20(1.386)	40 00(1.575)	YES	TRAY YES 58 3-1658046-2
6 50(256)	0 00(000)	0	0.102(0.040)	18 49(728)	15 20(598)	20 00(787)	YES	TRAY YES 28 3-1658046-1
48 51(1.831)	80 00(3.150)	4	0.152(0.060)	88 50(3.748)	85 20(3.748)	100 00(3.937)	YES	TRAY NO 200 2-1658046-5
38 53(1.438)	60 00(2.362)	3	0.152(0.060)	78 48(3.090)	75 20(2.961)	80 00(3.150)	YES	TRAY NO 180 2-1658046-4
28 52(1.044)	40 00(1.575)	2	0.102(0.040)	58 50(2.303)	55 20(2.173)	60 00(2.362)	YES	TRAY NO 120 2-1658046-3
18 51(650)	20 00(7874)	1	0.102(0.040)	38 48(1.515)	35 20(1.386)	40 00(1.575)	YES	TRAY NO 80 2-1658046-2
6 50(256)	0 00(000)	0	0.102(0.040)	18 49(728)	15 20(598)	20 00(787)	YES	TRAY NO 40 2-1658046-1
80 00(3.150)	4	0.152(0.060)	88 50(3.748)	85 20(3.748)	100 00(3.937)	NO	TRAY YES 140 1-1658046-5	
40 00(1.575)	2	0.102(0.040)	58 50(2.303)	55 20(2.173)	60 00(2.362)	NO	TRAY YES 84 1-1658046-3	
20 00(7874)	1	0.102(0.040)	38 48(1.515)	35 20(1.386)	40 00(1.575)	NO	TRAY YES 58 1-1658046-2	
0 00(000)	0	0.102(0.040)	18 49(728)	15 20(598)	20 00(787)	NO	TRAY YES 28 1-1658046-1	
80 00(3.150)	4	0.152(0.060)	88 50(3.748)	85 20(3.748)	100 00(3.937)	NO	TRAY NO 200 1-1658046-5	
40 00(1.575)	2	0.102(0.040)	58 50(2.303)	55 20(2.173)	60 00(2.362)	NO	TRAY NO 120 1-1658046-3	
20 00(7874)	1	0.102(0.040)	38 48(1.515)	35 20(1.386)	40 00(1.575)	NO	TRAY NO 80 1-1658046-2	
0 00(000)	0	0.102(0.040)	18 49(728)	15 20(598)	20 00(787)	NO	TRAY NO 40 1-1658046-1	

THIS DRAWING IS A CONTROLLED DOCUMENT.

DIMENSIONS: mm [INCHES]	TOLERANCES UNLESS OTHERWISE SPECIFIED: 0 PLG ± .010 1 PLG ± 0.3(0.1) 2 PLG ± 0.13(0.005) 3 PLG ± 0.08(.0025) 4 PLG ± .010 ANGLES ± .5°	REV B CARBO 23MAY03 DIM C DIXON 23MAY03 APP D DIXON 23MAY03 PRODUCT SPEC	REV A Tyco Electronics Corporation Harrisburg, PA 17105-3608
MATERIAL: SEE SHEET 1	FINISH: SEE SHEET 1	APPLICATION SPEC: CUSTOMER DRAWING	SIZE: A2 CASE CODE: 00779 DRAWING NO: 1658046 RESTRICTED TO: G1

SCALE: 3:1 SHEET 2 of 2 REV G1