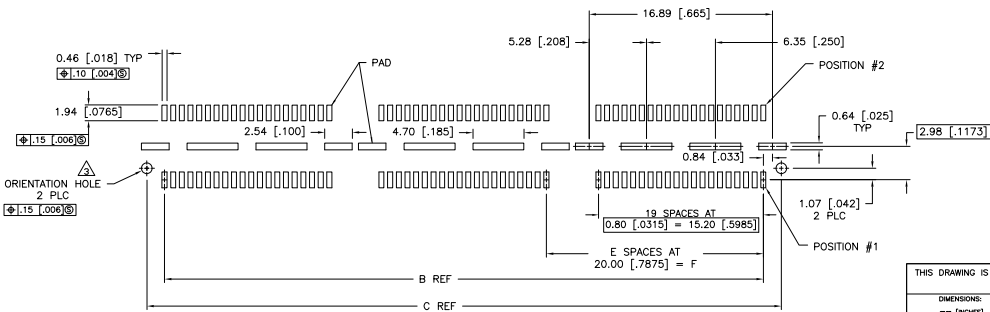
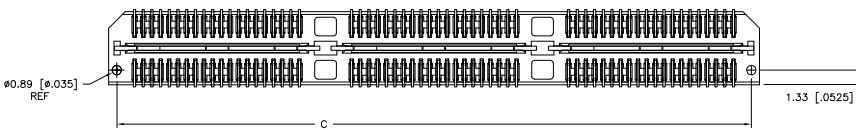
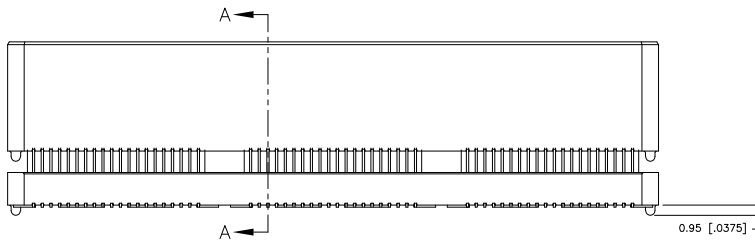
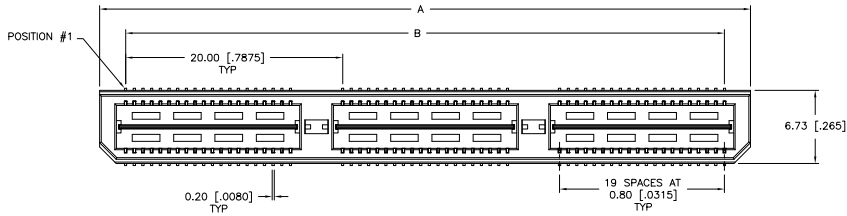


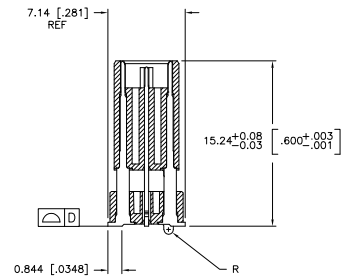
THIS DRAWING IS UNPUBLISHED. RELEASED FOR PUBLICATION.
 © COPYRIGHT BY TYCO ELECTRONICS CORPORATION. ALL RIGHTS RESERVED.

LOC		DIBT		REVISIONS			
AD	00	F	LTR	DESCRIPTION	DATE	BY	APPD
		K		REVISED PER EC 0512-0273-05	19SEP05	JDP	DD

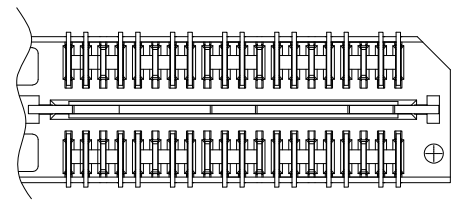


RECOMMENDED PC BOARD LAYOUT
 (VIEWED FROM CONNECTOR SIDE)

- ① HOUSING: LCP, BLACK.
CONTACT & GROUND PLANE: PHOS BRONZE.
- ② CONTACT PLATING: SELECT 0.25 MICROMETERS (.000010 IN.) MIN. GOLD.
- ③ FOR STANDARD APPLICATIONS, ORIENTATION HOLE TO BE Ø1.02 [Ø.0400].



SECTION A-A



DIFFERENTIAL PAIR LOADING
 (BOTTOM VIEW)
 SCALE 2:1

THIS DRAWING IS A CONTROLLED DOCUMENT.		DWG: B. CARBO 27JAN03 CHK: D. DIXON 27JAN03 D. DIXON 27JAN03 PRODUCT SPEC:	Tyco Electronics Tyco Electronics Corporation Harrisburg, PA 17105-3608
DIMENSIONS: mm [INCHES]	TO MANUFACTURER'S DIMENSIONS UNLESS SPECIFIED:	NAME:	HEADER ASSEMBLY, 16.0MM [.630] VERTICAL, 0.80MM CL, MICTOR SB
0 PLC ± — 1 PLC ± 0.3(0.1) 2 PLC ± 0.15(0.005) 3 PLC ± 0.08(0.0025) 4 PLC ± ± ± ANGLE: ± ± ± FINISH:	APPLICATION SPEC:	SIZE: A2 CASE CODE: 00779 DRAWING NO: 1658016	RESTRICTED TO:
MATERIAL:	WEIGHT:	CUSTOMER DRAWING	SCALE: 3:1 SHEET: 1 of 2 REV: K

AMP 1471-9 REV 31MAR2000

1658016

A

4

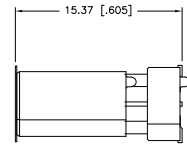
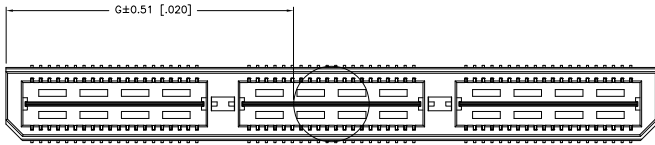
3

2

1

THIS DRAWING IS UNPUBLISHED. RELEASED FOR PUBLICATION
 © COPYRIGHT BY TYCO ELECTRONICS CORPORATION. ALL RIGHTS RESERVED.

LOC	DIST	REVISIONS					
AD	OO	P	L/R	DESCRIPTION	DATE	BY	APP
				SEE SHEET 1			



26.52(1.044)	40.00(1.575)	2	0.102(0.040)	58.50(2.303)	55.20(2.173)	60.00(2.362)	YES	POCKET TAPE	YES	58	7-1658016-3	
18.51(0.650)	20.00(0.7874)	1	0.102(0.040)	38.48(1.515)	35.20(1.386)	40.00(1.575)	YES	POCKET TAPE	YES	58	7-1658016-2	
6.50(0.256)	0.000	0	0.102(0.040)	18.49(0.728)	15.20(0.598)	20.00(0.787)	YES	POCKET TAPE	YES	28	7-1658016-1	
26.52(1.044)	40.00(1.575)	2	0.102(0.040)	58.50(2.303)	55.20(2.173)	60.00(2.362)	YES	POCKET TAPE	NO	120	6-1658016-3	
18.51(0.650)	20.00(0.7874)	1	0.102(0.040)	38.48(1.515)	35.20(1.386)	40.00(1.575)	YES	POCKET TAPE	NO	80	6-1658016-2	
6.50(0.256)	0.000	0	0.102(0.040)	18.49(0.728)	15.20(0.598)	20.00(0.787)	YES	POCKET TAPE	NO	40	6-1658016-1	
-	40.00(1.575)	2	0.102(0.040)	58.50(2.303)	55.20(2.173)	60.00(2.362)	NO	POCKET TAPE	YES	58	5-1658016-2	
-	20.00(0.7874)	1	0.102(0.040)	38.48(1.515)	35.20(1.386)	40.00(1.575)	NO	POCKET TAPE	YES	28	5-1658016-1	
-	0.000	0	0.102(0.040)	18.49(0.728)	15.20(0.598)	20.00(0.787)	NO	POCKET TAPE	YES	28	5-1658016-1	
-	40.00(1.575)	2	0.102(0.040)	58.50(2.303)	55.20(2.173)	60.00(2.362)	NO	POCKET TAPE	NO	120	4-1658016-3	
-	20.00(0.7874)	1	0.102(0.040)	38.48(1.515)	35.20(1.386)	40.00(1.575)	NO	POCKET TAPE	NO	80	4-1658016-2	
-	0.000	0	0.102(0.040)	18.49(0.728)	15.20(0.598)	20.00(0.787)	NO	POCKET TAPE	NO	40	4-1658016-1	
48.51(1.831)	80.00(3.150)	4	0.152(0.060)	98.50(3.748)	95.20(3.748)	100.00(3.937)	YES	TRAY	YES	140	3-1658016-5	
38.53(1.438)	60.00(2.362)	3	0.152(0.060)	78.49(3.090)	75.20(2.961)	80.00(3.150)	YES	TRAY	YES	112	3-1658016-4	
26.52(1.044)	40.00(1.575)	2	0.102(0.040)	58.50(2.303)	55.20(2.173)	60.00(2.362)	YES	TRAY	YES	84	3-1658016-3	
18.51(0.650)	20.00(0.7874)	1	0.102(0.040)	38.48(1.515)	35.20(1.386)	40.00(1.575)	YES	TRAY	YES	58	3-1658016-2	
6.50(0.256)	0.000	0	0.102(0.040)	18.49(0.728)	15.20(0.598)	20.00(0.787)	YES	TRAY	YES	28	3-1658016-1	
-	80.00(3.150)	4	0.152(0.060)	98.50(3.748)	95.20(3.748)	100.00(3.937)	NO	TRAY	YES	140	2-1658016-5	
-	60.00(2.362)	3	0.152(0.060)	78.49(3.090)	75.20(2.961)	80.00(3.150)	NO	TRAY	YES	112	2-1658016-4	
-	40.00(1.575)	2	0.102(0.040)	58.50(2.303)	55.20(2.173)	60.00(2.362)	NO	TRAY	YES	84	2-1658016-3	
-	20.00(0.7874)	1	0.102(0.040)	38.48(1.515)	35.20(1.386)	40.00(1.575)	NO	TRAY	YES	58	2-1658016-2	
-	0.000	0	0.102(0.040)	18.49(0.728)	15.20(0.598)	20.00(0.787)	NO	TRAY	YES	28	2-1658016-1	
-	80.00(3.150)	4	0.152(0.060)	98.50(3.748)	95.20(3.748)	100.00(3.937)	NO	TRAY	NO	200	1658016-5	
-	60.00(2.362)	3	0.152(0.060)	78.49(3.090)	75.20(2.961)	80.00(3.150)	NO	TRAY	NO	160	1658016-4	
-	40.00(1.575)	2	0.102(0.040)	58.50(2.303)	55.20(2.173)	60.00(2.362)	NO	TRAY	NO	120	1658016-3	
-	20.00(0.7874)	1	0.102(0.040)	38.48(1.515)	35.20(1.386)	40.00(1.575)	NO	TRAY	NO	80	1658016-2	
-	0.000	0	0.102(0.040)	18.49(0.728)	15.20(0.598)	20.00(0.787)	NO	TRAY	NO	40	1658016-1	
G	F	E	D	C	B	A	POLYIMIDE FILM PAD				TYPE	NO OF PART NUMBER

THIS DRAWING IS A CONTROLLED DOCUMENT.

DIMENSIONS: mm [INCHES] TO TOLERANCES UNLESS OTHERWISE SPECIFIED 0.152 (0.006) ± 0.001 (0.020) 0.304 (0.012) ± 0.001 (0.020) 0.457 (0.018) ± 0.001 (0.020) 0.609 (0.024) ± 0.001 (0.020) ANGLE: ± 1° FINISH: SEE SHEET 1	DRAWN: B. CARBO 27JAN03 CHECKED: D. DIXON 27JAN03 PRODUCT SPEC: D. DIXON APPLICATION SPEC: --- WEIGHT: --- CUSTOMER DRAWING	TYPED: --- NAME: Tyco Electronics Corporation HARRISBURG, PA 17105-3608 HEADER ASSEMBLY, 16.0MM [0.630] VERTICAL, MICTOR SB SIZE: A2 CASE CODE: 00779 DRAWING NO: C-1658016 RESTRICTED TO: --- SCALE: 3:1 SHEET: 2 of 2 REV: K
---	--	--

1658016

A

K