

4

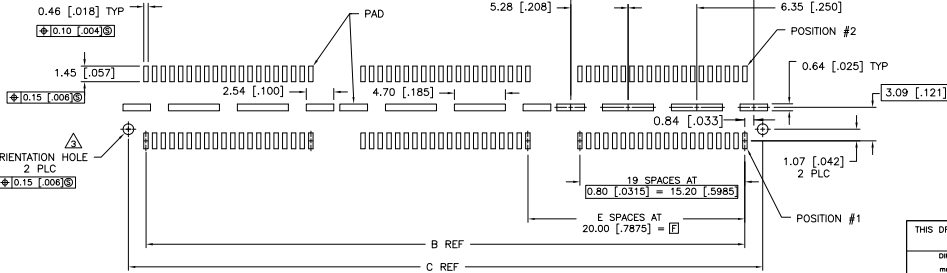
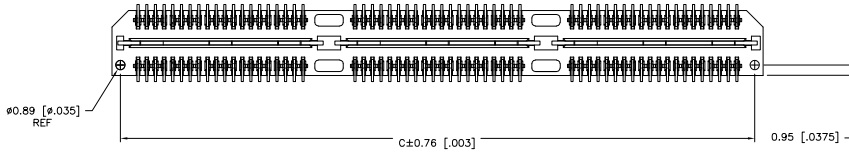
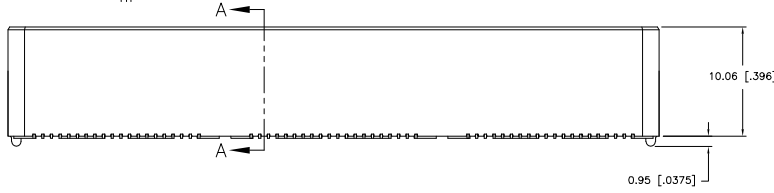
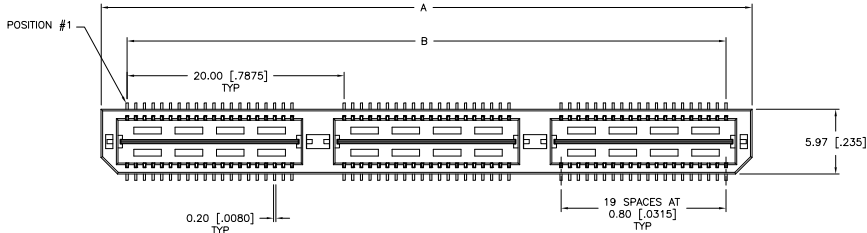
3

2

1

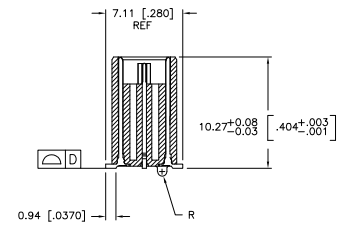
THIS DRAWING IS UNPUBLISHED. RELEASED FOR PUBLICATION. BY TYCO ELECTRONICS CORPORATION. ALL RIGHTS RESERVED.

LOC	DIST	REVISIONS					
		P	LTR	DESCRIPTION	DATE	BY	APPD
AD	00	H		REVISED PER EC 0512-0273-05	19SEP05	JDP	DD

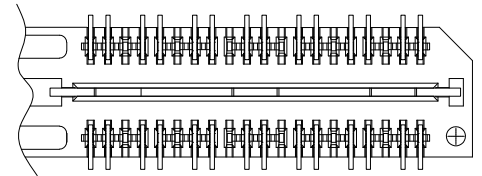


RECOMMENDED PC BOARD LAYOUT (VIEWED FROM CONNECTOR SIDE)

- 1 HOUSING: LCP, BLACK. CONTACT & GROUND PLANE: PHOS BRONZE.
- 2 CONTACT PLATING: SELECT 0.25 MICROMETERS (.000010 IN.) MIN. GOLD.
- 3 FOR STANDARD APPLICATIONS, ORIENTATION HOLE TO BE Ø1.02 [Ø.0400].



SECTION A-A



DIFFERENTIAL PAIR LOADING (BOTTOM VIEW) SCALE 2:1

THIS DRAWING IS A CONTROLLED DOCUMENT.		DWG: B. CARBO 30MNO3 CHK: 30MNO3 D. DIXON 30MNO3 APPD: 30MNO3 NAME:	Tyco Electronics Tyco Electronics Corporation Harrisburg, PA 17105-3608
DIMENSIONS: mm [INCHES]	TO MANUFACTURE PER: TO MANUFACTURE PER:	PRODUCT SPEC: APPLICATION SPEC: WEIGHT:	SIZE: A2 CASE CODE: 00779 DRAWING NO: C-1658015 RESTRICTED TO:
MATERIAL:	FINISH:	CUSTOMER DRAWING	SCALE: 3:1 SHEET: 1 of 2 REV: H

AMP 1471-9 REV 31MAR2000

1658015

A

4

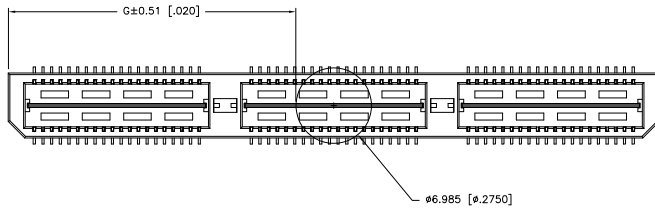
3

2

1

THIS DRAWING IS UNPUBLISHED. RELEASED FOR PUBLICATION
 © COPYRIGHT BY TYCO ELECTRONICS CORPORATION. ALL RIGHTS RESERVED.

LOC	DIST	REVISIONS					
AD	00	P	LTR	DESCRIPTION	DATE	BY	APPD
				SEE SHEET 1			



26.52(1.044)	40.00(1.575)	2	0.102(0040)	58.50(2.303)	55.20(2.173)	60.00(2.362)	YES	POCKET TAPE	YES	84	7-1658015-3	
16.51(650)	20.00(7874)	1	0.102(0040)	38.48(1.515)	35.20(1.386)	40.00(1.575)	YES	POCKET TAPE	YES	56	7-1658015-2	
6.50(256)	0(000)	0	0.102(0040)	18.49(728)	15.20(598)	20.00(787)	YES	POCKET TAPE	YES	28	7-1658015-1	
26.52(1.044)	40.00(1.575)	2	0.102(0040)	58.50(2.303)	55.20(2.173)	60.00(2.362)	YES	POCKET TAPE	NO	120	6-1658015-3	
16.51(650)	20.00(7874)	1	0.102(0040)	38.48(1.515)	35.20(1.386)	40.00(1.575)	YES	POCKET TAPE	NO	80	6-1658015-2	
6.50(256)	0(000)	0	0.102(0040)	18.49(728)	15.20(598)	20.00(787)	YES	POCKET TAPE	NO	40	6-1658015-1	
-	40.00(1.575)	2	0.102(0040)	58.50(2.303)	55.20(2.173)	60.00(2.362)	NO	POCKET TAPE	YES	84	5-1658015-3	
-	20.00(7874)	1	0.102(0040)	38.48(1.515)	35.20(1.386)	40.00(1.575)	NO	POCKET TAPE	YES	56	5-1658015-2	
-	0(000)	0	0.102(0040)	18.49(728)	15.20(598)	20.00(787)	NO	POCKET TAPE	YES	28	5-1658015-1	
-	40.00(1.575)	2	0.102(0040)	58.50(2.303)	55.20(2.173)	60.00(2.362)	NO	POCKET TAPE	NO	120	4-1658015-3	
-	20.00(7874)	1	0.102(0040)	38.48(1.515)	35.20(1.386)	40.00(1.575)	NO	POCKET TAPE	NO	80	4-1658015-2	
-	0(000)	0	0.102(0040)	18.49(728)	15.20(598)	20.00(787)	NO	POCKET TAPE	NO	40	4-1658015-1	
46.51(1.831)	80.00(3.150)	4	0.152(0060)	98.50(3.748)	95.20(3.748)	100.00(3.937)	YES	TRAY	YES	140	3-1658015-5	
36.53(1.438)	60.00(2.362)	3	0.152(0060)	78.49(3.090)	75.20(2.961)	80.00(3.150)	YES	TRAY	YES	112	3-1658015-4	
26.52(1.044)	40.00(1.575)	2	0.102(0040)	58.50(2.303)	55.20(2.173)	60.00(2.362)	YES	TRAY	YES	84	3-1658015-3	
16.51(650)	20.00(7874)	1	0.102(0040)	38.48(1.515)	35.20(1.386)	40.00(1.575)	YES	TRAY	YES	56	3-1658015-2	
6.50(256)	0(000)	0	0.102(0040)	18.49(728)	15.20(598)	20.00(787)	YES	TRAY	YES	28	3-1658015-1	
46.51(1.831)	80.00(3.150)	4	0.152(0060)	98.50(3.748)	95.20(3.748)	100.00(3.937)	YES	TRAY	NO	200	2-1658015-5	
36.53(1.438)	60.00(2.362)	3	0.152(0060)	78.49(3.090)	75.20(2.961)	80.00(3.150)	YES	TRAY	NO	160	2-1658015-4	
26.52(1.044)	40.00(1.575)	2	0.102(0040)	58.50(2.303)	55.20(2.173)	60.00(2.362)	YES	TRAY	NO	120	2-1658015-3	
16.51(650)	20.00(7874)	1	0.102(0040)	38.48(1.515)	35.20(1.386)	40.00(1.575)	YES	TRAY	NO	80	2-1658015-2	
6.50(256)	0(000)	0	0.102(0040)	18.49(728)	15.20(598)	20.00(787)	YES	TRAY	NO	40	2-1658015-1	
-	80.00(3.150)	4	0.152(0060)	98.50(3.748)	95.20(3.748)	100.00(3.937)	NO	TRAY	YES	140	1-1658015-5	
-	60.00(2.362)	3	0.152(0060)	78.49(3.090)	75.20(2.961)	80.00(3.150)	NO	TRAY	YES	112	1-1658015-4	
-	40.00(1.575)	2	0.102(0040)	58.50(2.303)	55.20(2.173)	60.00(2.362)	NO	TRAY	YES	84	1-1658015-3	
-	20.00(7874)	1	0.102(0040)	38.48(1.515)	35.20(1.386)	40.00(1.575)	NO	TRAY	YES	56	1-1658015-2	
-	0(000)	0	0.102(0040)	18.49(728)	15.20(598)	20.00(787)	NO	TRAY	YES	28	1-1658015-1	
-	80.00(3.150)	4	0.152(0060)	98.50(3.748)	95.20(3.748)	100.00(3.937)	NO	TRAY	NO	200	1658015-5	
-	60.00(2.362)	3	0.152(0060)	78.49(3.090)	75.20(2.961)	80.00(3.150)	NO	TRAY	NO	160	1658015-4	
-	40.00(1.575)	2	0.102(0040)	58.50(2.303)	55.20(2.173)	60.00(2.362)	NO	TRAY	NO	120	1658015-3	
-	20.00(7874)	1	0.102(0040)	38.48(1.515)	35.20(1.386)	40.00(1.575)	NO	TRAY	NO	80	1658015-2	
-	0(000)	0	0.102(0040)	18.49(728)	15.20(598)	20.00(787)	NO	TRAY	NO	40	1658015-1	
G	F	E	D	C	B	A	POLYIMIDE FILM PAD ▲		PACKAGING TYPE	DIFF. PAIR	NO OF POS	PART NUMBER

THIS DRAWING IS A CONTROLLED DOCUMENT.

DIMENSIONS: mm [INCHES]	TO DIMENSIONS UNLESS OTHERWISE SPECIFIED	30MMX03	30MMX03	30MMX03	30MMX03
0 P.L.C. ±	1 P.L.C. ± 0.3(0.1)	2 P.L.C. ± 0.15(0.005)	3 P.L.C. ± 0.08(0.0025)	4 P.L.C. ± ± ±	FINISH
MATERIAL: SEE SHEET 1	SEE SHEET 1	BY: B. CARBO	CHK: D. DIXON	APPD: D. DIXON	NAME: D. DIXON
CUSTOMER DRAWING		Tyco Electronics Corporation Harrisburg, PA 17105-3608		HEADER ASSEMBLY, 11.0MM [.433] VERTICAL, 0.80MM CL, MICTOR SB	
SCALE: 3:1		SIZE: A2		CASE CODE: 00779	
DRAWING NO: 1658015		RESTRICTED TO: -		SHEET: 2 of 2	

1658015

A

H