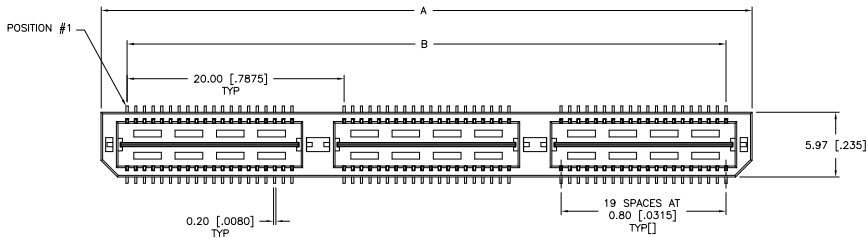
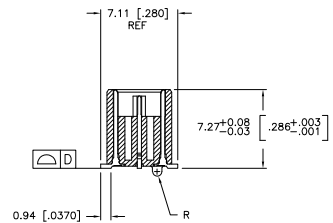
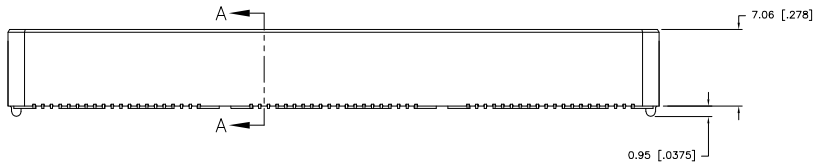


THIS DRAWING IS UNPUBLISHED. RELEASED FOR PUBLICATION. BY TYCO ELECTRONICS CORPORATION. ALL RIGHTS RESERVED.

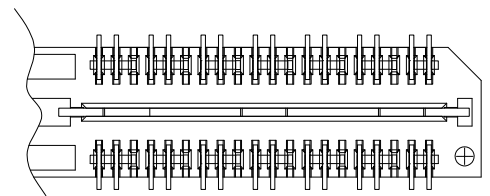
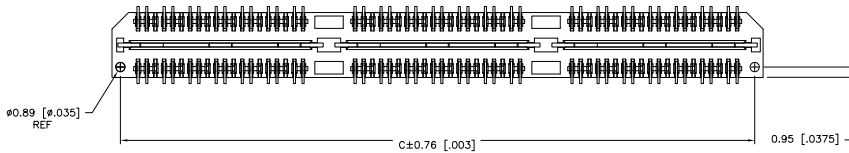
LOC	DIST	REVISIONS					
		P	LTR	DESCRIPTION	DATE	BY	APPD
AD	00	H		REVISED PER EC 0512-0273-05	19SEP05	JDP	DD



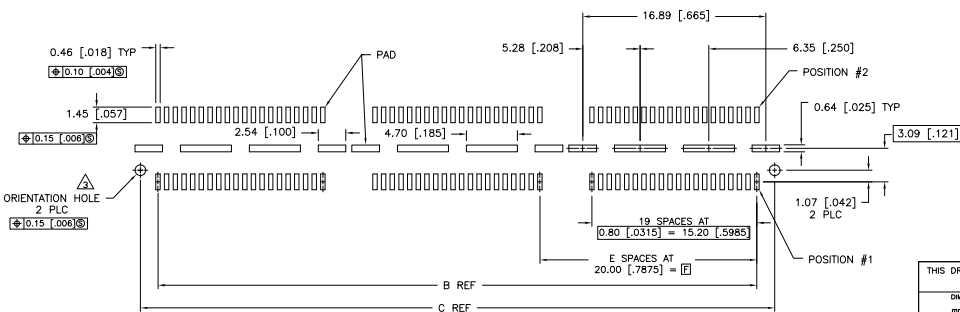
- 1 HOUSING: LCP, BLACK. CONTACT & GROUND PLANE: PHOS BRONZE.
- 2 CONTACT PLATING: SELECT 0.25 MICROMETERS (.000010 IN.) MIN. GOLD.
- 3 FOR STANDARD APPLICATIONS, ORIENTATION HOLE TO BE $\varnothing 1.02$ [0.0400].



SECTION A-A



DIFFERENTIAL PAIR LOADING (BOTTOM VIEW) SCALE 2:1



RECOMMENDED PC BOARD LAYOUT (VIEWED FROM CONNECTOR SIDE)

THIS DRAWING IS A CONTROLLED DOCUMENT.		DWG: B. CARBO 30MAY03 CHK: D. DIXON 30MAY03 P/NO: D. DIXON 30MAY03 PRODUCT SPEC:	Tyco Electronics Tyco Electronics Corporation Harrisburg, PA 17105-3608
DIMENSIONS: mm [INCHES] 0 PLC ± 0.15 [0.006] 1 PLC ± 0.25 [0.010] 2 PLC ± 0.38 [0.015] 3 PLC ± 0.51 [0.020] 4 PLC ± 0.64 [0.025] 5 PLC ± 0.76 [0.030]	MATERIAL: LCP FINISH:	APPLICATION SPEC: — WEIGHT: —	NAME: HEADER ASSEMBLY, 8.0MM [.315] VERTICAL, 0.80MM CL, MICTOR SB SIZE: A2 CASE CODE: 00779 DRAWING NO: 1658014 RESTRICTED TO: —
CUSTOMER DRAWING		SCALE: 3:1	SHEET: 1 of 2 REV: H

AMP 1471-9 REV 31MAR2000

1658014

A

4

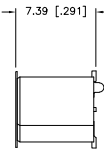
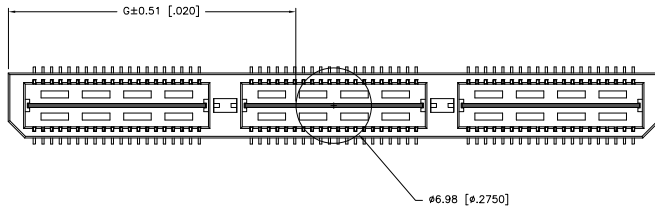
3

2

1

THIS DRAWING IS UNPUBLISHED. RELEASED FOR PUBLICATION
 © COPYRIGHT BY TYCO ELECTRONICS CORPORATION. ALL RIGHTS RESERVED.

LOC	DIST	REVISIONS					
AD	00	P	LR	DESCRIPTION	DATE	BY	APP
				SEE SHEET 1			



26.52(1.044)	40.00(1.575)	2	0.102(0.040)	58.50(2.303)	55.20(2.173)	60.00(2.362)	YES	POCKET TAPE	YES	84	7-1658014-3
16.51(0.650)	20.00(0.7874)	1	0.102(0.040)	38.48(1.515)	35.20(1.386)	40.00(1.575)	YES	POCKET TAPE	YES	56	7-1658014-2
6.50(0.256)	0.000	0	0.102(0.040)	18.49(0.728)	15.20(0.598)	20.00(0.787)	YES	POCKET TAPE	YES	28	7-1658014-1
26.52(1.044)	40.00(1.575)	2	0.102(0.040)	58.50(2.303)	55.20(2.173)	60.00(2.362)	YES	POCKET TAPE	NO	120	6-1658014-3
16.51(0.650)	20.00(0.7874)	1	0.102(0.040)	38.48(1.515)	35.20(1.386)	40.00(1.575)	YES	POCKET TAPE	NO	80	6-1658014-2
6.50(0.256)	0.000	0	0.102(0.040)	18.49(0.728)	15.20(0.598)	20.00(0.787)	YES	POCKET TAPE	NO	40	6-1658014-1
-	40.00(1.575)	2	0.102(0.040)	58.50(2.303)	55.20(2.173)	60.00(2.362)	NO	POCKET TAPE	YES	84	5-1658014-3
-	20.00(0.7874)	1	0.102(0.040)	38.48(1.515)	35.20(1.386)	40.00(1.575)	NO	POCKET TAPE	YES	56	5-1658014-2
-	0.000	0	0.102(0.040)	18.49(0.728)	15.20(0.598)	20.00(0.787)	NO	POCKET TAPE	YES	28	5-1658014-1
-	40.00(1.575)	2	0.102(0.040)	58.50(2.303)	55.20(2.173)	60.00(2.362)	NO	POCKET TAPE	NO	120	4-1658014-3
-	20.00(0.7874)	1	0.102(0.040)	38.48(1.515)	35.20(1.386)	40.00(1.575)	NO	POCKET TAPE	NO	80	4-1658014-2
-	0.000	0	0.102(0.040)	18.49(0.728)	15.20(0.598)	20.00(0.787)	NO	POCKET TAPE	NO	40	4-1658014-1
46.51(1.831)	80.00(3.150)	4	0.152(0.060)	98.50(3.748)	95.20(3.748)	100.00(3.937)	YES	TRAY	YES	140	3-1658014-5
36.53(1.438)	60.00(2.362)	3	0.152(0.060)	78.49(3.090)	75.20(2.961)	80.00(3.150)	YES	TRAY	YES	112	3-1658014-4
26.52(1.044)	40.00(1.575)	2	0.102(0.040)	58.50(2.303)	55.20(2.173)	60.00(2.362)	YES	TRAY	YES	84	3-1658014-3
16.51(0.650)	20.00(0.7874)	1	0.102(0.040)	38.48(1.515)	35.20(1.386)	40.00(1.575)	YES	TRAY	YES	56	3-1658014-2
6.50(0.256)	0.000	0	0.102(0.040)	18.49(0.728)	15.20(0.598)	20.00(0.787)	YES	TRAY	YES	28	3-1658014-1
46.51(1.831)	80.00(3.150)	4	0.152(0.060)	98.50(3.748)	95.20(3.748)	100.00(3.937)	YES	TRAY	NO	200	2-1658014-5
36.53(1.438)	60.00(2.362)	3	0.152(0.060)	78.49(3.090)	75.20(2.961)	80.00(3.150)	YES	TRAY	NO	160	2-1658014-4
26.52(1.044)	40.00(1.575)	2	0.102(0.040)	58.50(2.303)	55.20(2.173)	60.00(2.362)	YES	TRAY	NO	120	2-1658014-3
16.51(0.650)	20.00(0.7874)	1	0.102(0.040)	38.48(1.515)	35.20(1.386)	40.00(1.575)	YES	TRAY	NO	80	2-1658014-2
6.50(0.256)	0.000	0	0.102(0.040)	18.49(0.728)	15.20(0.598)	20.00(0.787)	YES	TRAY	NO	40	2-1658014-1
-	80.00(3.150)	4	0.152(0.060)	98.50(3.748)	95.20(3.748)	100.00(3.937)	NO	TRAY	YES	140	1-1658014-5
-	60.00(2.362)	3	0.152(0.060)	78.49(3.090)	75.20(2.961)	80.00(3.150)	NO	TRAY	YES	112	1-1658014-4
-	40.00(1.575)	2	0.102(0.040)	58.50(2.303)	55.20(2.173)	60.00(2.362)	NO	TRAY	YES	84	1-1658014-3
-	20.00(0.7874)	1	0.102(0.040)	38.48(1.515)	35.20(1.386)	40.00(1.575)	NO	TRAY	YES	56	1-1658014-2
-	0.000	0	0.102(0.040)	18.49(0.728)	15.20(0.598)	20.00(0.787)	NO	TRAY	YES	28	1-1658014-1
-	80.00(3.150)	4	0.152(0.060)	98.50(3.748)	95.20(3.748)	100.00(3.937)	NO	TRAY	NO	200	1658014-5
-	60.00(2.362)	3	0.152(0.060)	78.49(3.090)	75.20(2.961)	80.00(3.150)	NO	TRAY	NO	160	1658014-4
-	40.00(1.575)	2	0.102(0.040)	58.50(2.303)	55.20(2.173)	60.00(2.362)	NO	TRAY	NO	120	1658014-3
-	20.00(0.7874)	1	0.102(0.040)	38.48(1.515)	35.20(1.386)	40.00(1.575)	NO	TRAY	NO	80	1658014-2
-	0.000	0	0.102(0.040)	18.49(0.728)	15.20(0.598)	20.00(0.787)	NO	TRAY	NO	40	1658014-1
G	F	E	D	C	B	A		POLYIMIDE FILM PAD ▲			PART NUMBER

THIS DRAWING IS A CONTROLLED DOCUMENT.

DIMENSIONS: mm [INCHES]	TO DIMENSIONS UNLESS OTHERWISE SPECIFIED	DATE: 03/01/00	BY: D. DIXON	30MNO3	30MNO3	30MNO3	30MNO3
0 PLC ± 0.15	1 PLC ± 0.30 [0.1]	2 PLC ± 0.15 [0.005]	3 PLC ± 0.00 [0.0025]	4 HOLE ± 0.05	5 HOLE ± 0.05	6 HOLE ± 0.05	7 HOLE ± 0.05
MATERIAL: SEE SHEET 1	FINISH: SEE SHEET 1	APPLICATION SPEC: CUSTOMER DRAWING	WEIGHT: —	SIZE: A2	DATE CODE: 00779	DRAWING NO: 1658014	RESTRICTED TO: —
				CUSTOMER DRAWING		SCALE: 3:1 SHEET: 2 of 2 REV: H	

TYCO Electronics Corporation
 Harrisburg, PA 17105-3608

HEADER ASSEMBLY, 8.0MM [.315] VERTICAL,
 0.80MM CL,
 MICTOR SB

1658014

A