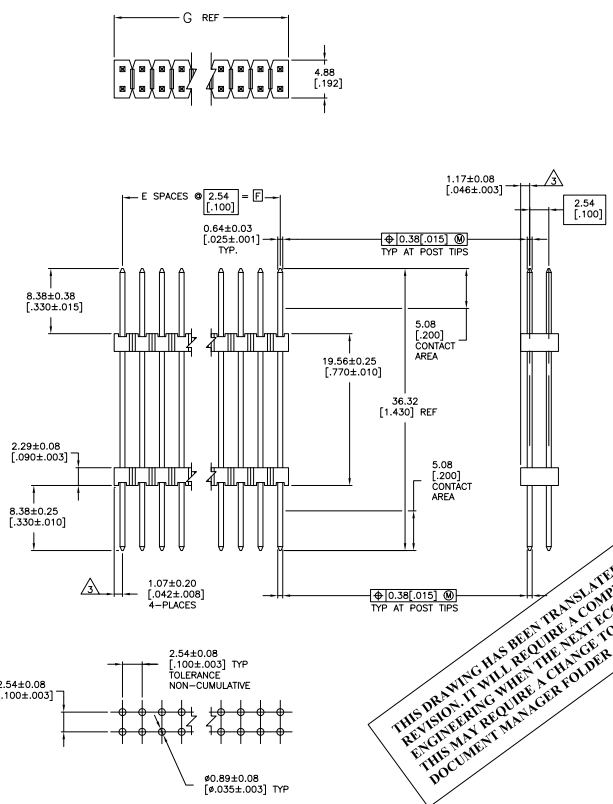


THIS DRAWING IS UNPUBLISHED
 ALL RIGHTS RESERVED

REV	DATE	DESCRIPTION	BY	CHK	APP
AD	00	REVISED PER ECD-11-004820			
F			21MM11	RC	HMR

- ASSEMBLY MAY BE BROKEN TO THE DESIRED NUMBER OF POSITIONS
 - TRUE POSITION TOLERANCE OF THE POST TIPS APPLIES WHEN THE HEADER IS HELD FLAT AGAINST THE PRINTED CIRCUIT BOARD
- ▲ THE NOTED DIMENSIONS APPLY AT THE INTERSECTION OF THE POST AND HOUSING
 ▲ HOUSING: FLAME RETARDANT THERMOPLASTIC; COLOR: BLACK.
 ▲ FINISH: 0.000381 [0.00015] GOLD ON CONTACT AREA, OVER 0.00127 [0.00050] NICKEL, ENTIRE POST.



RECOMMENDED HOLE LAYOUT

THIS DRAWING HAS BEEN TRANSLATED AND REFLECTS THE PREVIOUS REVISION. IT WILL REQUIRE A COMPLETE DRAWING CHECK BY PRODUCT ENGINEERING WHEN THE NEXT ECO CHANGE IS WRITTEN - THIS MAY REQUIRE A CHANGE TO THE REVISION OF THE DOCUMENT MANAGER FOLDER AND THIS DRAWING.

101.19 [3.984]	99.06 [3.900]	39	80	4-146510-0
98.05 [3.858]	96.52 [3.800]	38	78	3-146510-9
96.11 [3.784]	93.98 [3.700]	37	76	3-146510-8
93.57 [3.684]	91.44 [3.600]	36	74	3-146510-7
91.03 [3.584]	88.90 [3.500]	35	72	3-146510-6
88.49 [3.484]	86.36 [3.400]	34	70	3-146510-5
85.95 [3.384]	83.82 [3.300]	33	68	3-146510-4
83.41 [3.284]	81.28 [3.200]	32	66	3-146510-3
80.87 [3.184]	78.74 [3.100]	31	64	3-146510-2
78.33 [3.084]	76.20 [3.000]	30	62	3-146510-1
75.79 [2.984]	73.66 [2.900]	29	60	3-146510-0
73.25 [2.884]	71.12 [2.800]	28	58	2-146510-9
70.71 [2.784]	68.58 [2.700]	27	56	2-146510-8
68.17 [2.684]	66.04 [2.600]	26	54	2-146510-7
65.63 [2.584]	63.50 [2.500]	25	52	2-146510-6
63.09 [2.484]	60.96 [2.400]	24	50	2-146510-5
60.55 [2.384]	58.42 [2.300]	23	48	2-146510-4
58.01 [2.284]	55.88 [2.200]	22	46	2-146510-3
55.47 [2.184]	53.34 [2.100]	21	44	2-146510-2
52.93 [2.084]	50.80 [2.000]	20	42	2-146510-1
50.39 [1.984]	48.26 [1.900]	19	40	2-146510-0
47.85 [1.884]	45.72 [1.800]	18	38	1-146510-9
45.31 [1.784]	43.18 [1.700]	17	36	1-146510-8
42.77 [1.684]	40.64 [1.600]	16	34	1-146510-7
40.23 [1.584]	38.10 [1.500]	15	32	1-146510-6
37.69 [1.484]	35.56 [1.400]	14	30	1-146510-5
35.15 [1.384]	33.02 [1.300]	13	28	1-146510-4
32.61 [1.284]	30.48 [1.200]	12	26	1-146510-3
30.07 [1.184]	27.94 [1.100]	11	24	1-146510-2
27.53 [1.084]	25.40 [1.000]	10	22	1-146510-1
24.99 [0.984]	22.86 [0.900]	9	20	1-146510-0
22.45 [0.884]	20.32 [0.800]	8	18	146510-9
19.91 [0.784]	17.78 [0.700]	7	16	146510-8
17.37 [0.684]	15.24 [0.600]	6	14	146510-7
14.83 [0.584]	12.70 [0.500]	5	12	146510-6
12.29 [0.484]	10.16 [0.400]	4	10	146510-5
9.75 [0.384]	7.62 [0.300]	3	8	146510-4
7.21 [0.284]	5.08 [0.200]	2	6	146510-3
4.67 [0.184]	2.54 [0.100]	1	4	146510-2
2.13 [0.084]	-	-	2	146510-1
G	F	E	NO. OF POSITIONS	PART NUMBER

THIS DRAWING IS A CONTROLLED DOCUMENT. IT IS THE PROPERTY OF TE CONNECTIVITY. IT IS TO BE KEPT IN THE ORIGINAL FILE AND NOT REPRODUCED OR TRANSMITTED IN ANY FORM OR BY ANY MEANS, ELECTRONIC OR MECHANICAL, INCLUDING PHOTOCOPYING, RECORDING, OR BY ANY INFORMATION STORAGE AND RETRIEVAL SYSTEM.

INCHES (DIMENSIONS) MILLIMETERS (DIMENSIONS)
 DECIMALS (DIMENSIONS) MILLIMETERS (DIMENSIONS)

DATE: 10/07/09 DRAWING NO: 146510 REV: 4.1
 CUSTOMER DRAWING SHEET 1 OF 1