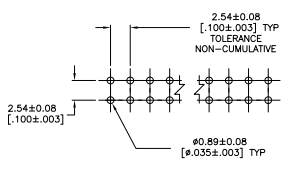
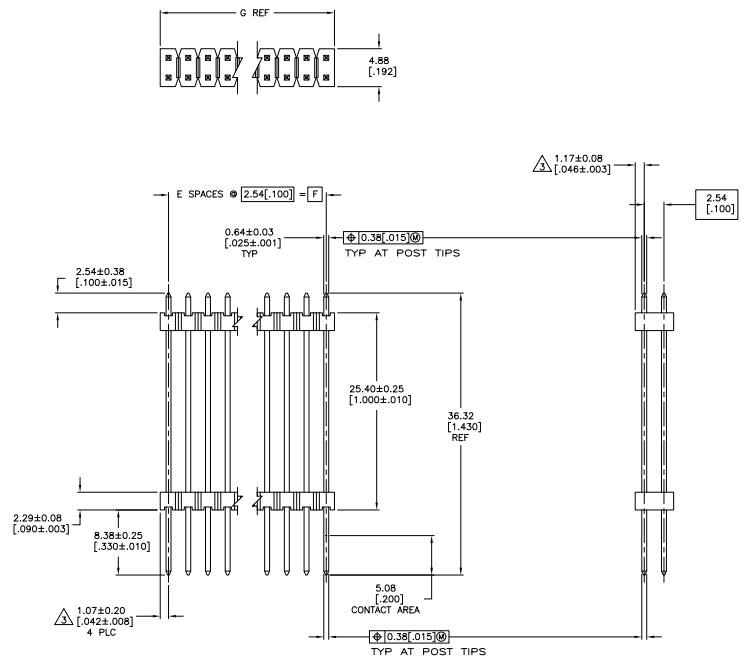


REV. NO.		DESCRIPTION	DATE	BY	APP'D
AD	00	REVISED PER ECO-11-004820	11MAR11	RK	HMR



RECOMMENDED HOLE LAYOUT

- ASSEMBLY MAY BE BROKEN TO THE DESIRED NUMBER OF POSITIONS
 - TRUE POSITION TOLERANCE OF THE POST TIPS APPLIES WHEN THE HEADER IS HELD FLAT AGAINST THE PRINTED CIRCUIT BOARD
- △ THE NOTED DIMENSIONS APPLY AT THE INTERSECTION OF THE POST AND HOUSING
- △ HOUSING: FLAME RETARDANT THERMOPLASTIC; COLOR: BLACK.
- △ FINISH: 0.000381 [0.00015] GOLD ON CONTACT AREA, 0.00254-0.00508 [0.00100-0.00200] MATTE TIN-LEAD ON SOLDER TAIL, 0.00127 [0.000050] NICKEL ENTIRE POST.
- △ FINISH: 0.000381 [0.00015] GOLD ON CONTACT AREA, 0.00254-0.00508 [0.00100-0.00200] MATTE TIN ON SOLDER TAIL, 0.00127 [0.000050] NICKEL ENTIRE POST.

THIS DRAWING IS A CONTROLLED DOCUMENT		DATE	BY	DESCRIPTION	DATE	BY	DESCRIPTION
DATE	BY	DATE	BY	DATE	BY	DATE	BY

TE Connectivity

HEADER ASSEMBLY, MOD II, STACKING, DOUBLE ROW, .025 SQ POST, UNDERGROUDED

DATE SIZE DRAWING NO. REV. TO

A1 00779 G=146509

CUSTOMER DRAWING

