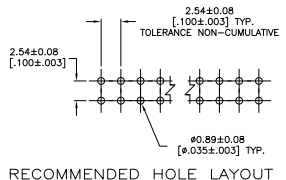
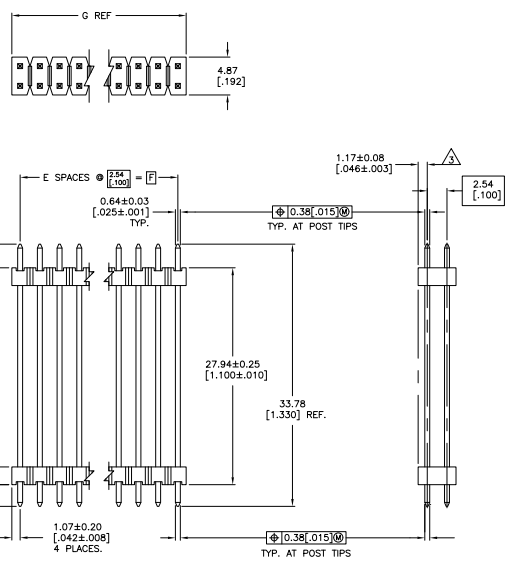


REV	DATE	DESCRIPTION	BY	CHK	APP
AD 39		REVISED PER EDD-11-046820	AT		



1. ASSEMBLY MAY BE BROKEN TO THE DESIRED NUMBER OF POSITIONS.  
 2. TRUE POSITION TOLERANCE OF THE POST TIPS APPLIES WHEN THE HEADER IS HELD FLAT AGAINST THE PRINTED CIRCUIT BOARD.  
 THE NOTED DIMENSIONS APPLY AT THE INTERSECTION OF THE POST AND HOUSING.  
 HOUSING: FLAME RETARDANT THERMOPLASTIC; COLOR: BLACK.  
 FINISH: 0.00254-0.00508 [0.00100-0.00200] BRIGHT TIN-LEAD OVER 0.00127 [0.00050] NICKEL ENTIRE POST.  
 FINISH: 0.00254-0.00508 [0.00100-0.00200] MATTE TIN OVER 0.00127 [0.00050] NICKEL ENTIRE POST.

PLATING	G	F	E	NO. OF POSITIONS	PART NUMBER
△	101.19	99.06	39	80	9-146505-0
△	3.984	3.900	38	78	8-146505-9
△	3.884	3.800	37	76	8-146505-8
△	3.784	3.700	36	74	8-146505-7
△	93.57	91.44	35	72	8-146505-6
△	3.684	3.600	34	70	8-146505-5
△	91.03	88.90	33	68	8-146505-4
△	3.584	3.500	32	66	8-146505-3
△	85.95	83.82	31	64	8-146505-2
△	3.484	3.400	30	62	8-146505-1
△	83.41	81.28	29	60	8-146505-0
△	3.384	3.300	28	58	7-146505-9
△	80.87	78.74	27	56	7-146505-8
△	3.284	3.200	26	54	7-146505-7
△	78.33	76.20	25	52	7-146505-6
△	3.084	3.000	24	50	7-146505-5
△	75.79	73.66	23	48	7-146505-4
△	2.984	2.900	22	46	7-146505-3
△	73.25	71.12	21	44	7-146505-2
△	2.884	2.800	20	42	7-146505-1
△	70.71	68.58	19	40	7-146505-0
△	2.784	2.700	18	38	6-146505-9
△	68.17	66.04	17	36	6-146505-8
△	2.684	2.600	16	34	6-146505-7
△	65.63	63.50	15	32	6-146505-6
△	2.584	2.500	14	30	6-146505-5
△	63.09	60.96	13	28	6-146505-4
△	2.484	2.400	12	26	6-146505-3
△	60.55	58.42	11	24	6-146505-2
△	2.384	2.300	10	22	6-146505-1
△	58.01	55.88	9	20	6-146505-0
△	2.284	2.200	8	18	5-146505-9
△	55.47	53.34	7	16	5-146505-8
△	2.184	2.100	6	14	5-146505-7
△	52.93	50.80	5	12	5-146505-6
△	2.084	2.000	4	10	5-146505-5
△	50.39	48.26	3	8	5-146505-4
△	1.984	1.900	2	6	5-146505-3
△	47.85	45.72	1	4	5-146505-2
△	1.784	1.700	-	2	5-146505-1
△	45.31	43.18	-	-	-
△	42.77	40.64	-	-	-
△	1.684	1.600	-	-	-
△	40.23	38.10	-	-	-
△	1.584	1.500	-	-	-
△	37.69	35.56	-	-	-
△	1.484	1.400	-	-	-
△	35.15	33.02	-	-	-
△	1.384	1.300	-	-	-
△	32.61	30.48	-	-	-
△	1.284	1.200	-	-	-
△	30.07	27.94	-	-	-
△	1.184	1.100	-	-	-
△	27.53	25.40	-	-	-
△	1.084	1.000	-	-	-
△	24.99	22.86	-	-	-
△	0.984	0.900	-	-	-
△	22.45	20.32	-	-	-
△	0.884	0.800	-	-	-
△	19.91	17.78	-	-	-
△	0.784	0.700	-	-	-
△	17.37	15.24	-	-	-
△	0.684	0.600	-	-	-
△	14.83	12.70	-	-	-
△	0.584	0.500	-	-	-
△	12.29	10.16	-	-	-
△	0.484	0.400	-	-	-
△	9.75	7.62	-	-	-
△	0.384	0.300	-	-	-
△	7.21	5.08	-	-	-
△	0.284	0.200	-	-	-
△	4.67	2.54	-	-	-
△	0.184	0.100	-	-	-
△	2.13	0.00	-	-	-
△	0.084	0.00	-	-	-

PLATING	G	F	E	NO. OF POSITIONS	PART NUMBER
△	101.19	99.06	39	80	4-146505-0
△	3.984	3.900	38	78	3-146505-9
△	3.884	3.800	37	76	3-146505-8
△	3.784	3.700	36	74	3-146505-7
△	93.57	91.44	35	72	3-146505-6
△	3.684	3.600	34	70	3-146505-5
△	91.03	88.90	33	68	3-146505-4
△	3.584	3.500	32	66	3-146505-3
△	85.95	83.82	31	64	3-146505-2
△	3.484	3.400	30	62	3-146505-1
△	83.41	81.28	29	60	3-146505-0
△	3.384	3.300	28	58	2-146505-9
△	80.87	78.74	27	56	2-146505-8
△	3.284	3.200	26	54	2-146505-7
△	78.33	76.20	25	52	2-146505-6
△	3.084	3.000	24	50	2-146505-5
△	75.79	73.66	23	48	2-146505-4
△	2.984	2.900	22	46	2-146505-3
△	73.25	71.12	21	44	2-146505-2
△	2.884	2.800	20	42	2-146505-1
△	70.71	68.58	19	40	2-146505-0
△	2.784	2.700	18	38	1-146505-9
△	68.17	66.04	17	36	1-146505-8
△	2.684	2.600	16	34	1-146505-7
△	65.63	63.50	15	32	1-146505-6
△	2.584	2.500	14	30	1-146505-5
△	63.09	60.96	13	28	1-146505-4
△	2.484	2.400	12	26	1-146505-3
△	60.55	58.42	11	24	1-146505-2
△	2.384	2.300	10	22	1-146505-1
△	58.01	55.88	9	20	1-146505-0
△	2.284	2.200	8	18	146505-9
△	55.47	53.34	7	16	146505-8
△	2.184	2.100	6	14	146505-7
△	52.93	50.80	5	12	146505-6
△	2.084	2.000	4	10	146505-5
△	50.39	48.26	3	8	146505-4
△	1.984	1.900	2	6	146505-3
△	47.85	45.72	1	4	146505-2
△	1.784	1.700	-	2	146505-1
△	45.31	43.18	-	-	-
△	42.77	40.64	-	-	-
△	1.684	1.600	-	-	-
△	40.23	38.10	-	-	-
△	1.584	1.500	-	-	-
△	37.69	35.56	-	-	-
△	1.484	1.400	-	-	-
△	35.15	33.02	-	-	-
△	1.384	1.300	-	-	-
△	32.61	30.48	-	-	-
△	1.284	1.200	-	-	-
△	30.07	27.94	-	-	-
△	1.184	1.100	-	-	-
△	27.53	25.40	-	-	-
△	1.084	1.000	-	-	-
△	24.99	22.86	-	-	-
△	0.984	0.900	-	-	-
△	22.45	20.32	-	-	-
△	0.884	0.800	-	-	-
△	19.91	17.78	-	-	-
△	0.784	0.700	-	-	-
△	17.37	15.24	-	-	-
△	0.684	0.600	-	-	-
△	14.83	12.70	-	-	-
△	0.584	0.500	-	-	-
△	12.29	10.16	-	-	-
△	0.484	0.400	-	-	-
△	9.75	7.62	-	-	-
△	0.384	0.300	-	-	-
△	7.21	5.08	-	-	-
△	0.284	0.200	-	-	-
△	4.67	2.54	-	-	-
△	0.184	0.100	-	-	-
△	2.13	0.00	-	-	-
△	0.084	0.00	-	-	-

THIS DRAWING IS A CONTROLLED DOCUMENT. (11-2007-04)

TE Connectivity  
 HEADER ASSEMBLY, MOD II,  
 STACKING, DOUBLE ROW,  
 0.025 SQ. POST, UNSHROUDED

DATE: 11-2007-04  
 SIZE: 4.1  
 CUSTOMER DRAWING